

# Tap Chuck

絲攻夾頭系列

C

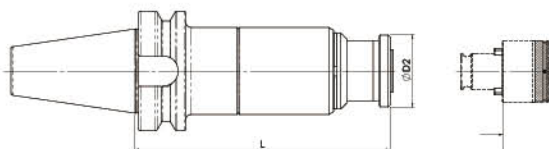


## Quick Change Tapping Chuck 快換式絲攻刀桿 With Length Compensation / Extra length 伸縮緩衝加長型



### Feature / 特點

- Quick Change of Tap Adapters.
- Length Compensation could prevent tap from breaking upon tapping.
- 快換式絲攻連接桿
- 緩衝可預防絲攻在攻牙時斷落



Code No. 型號	SPEC. 規格	Capacity 攻牙能力	L	ΦD2	Collets 適用筒夾	
BA2BT40331001A	BT40-WFE12-135	M3-M14	135	38	TC312	TC312B
BA2BT40331002A	BT40-WFE12-165	M3-M14	165	38	TC312	TC312B
BA2BT50331001A	BT50-WFE12-135	M3-M14	135	38	TC312	TC312B
BA2BT50331003A	BT50-WFE12-165	M3-M14	165	38	TC312	TC312B
BA2BT50331002A	BT50-WFE12-195	M3-M14	195	38	TC312	TC312B
BA2BT50332001A	BT50-WFE20-135	M8-M24	135	58	TC820	TC820B
BA2BT50332003A	BT50-WFE20-195	M8-M24	195	58	TC820	TC820B
BA2BT50332002A	BT50-WFE20-165	M8-M24	165	58	TC820	TC820B
BA2BT50333001A	BT50-WFE 33-200	M14-M36	200	62	TC1433	TC1433B

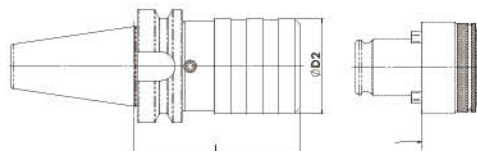
\*Custom-Built products are available on request. \*特製品可依客戶需求訂製 \*Tap collets to be ordered separately. \*絲攻夾頭需另購

## Quick Change Tapping Chuck 快換式絲攻刀桿 With Length Compensation 伸縮緩衝型



### Feature / 特點

- Quick Change of Tap Adapters.
- Length Compensation could prevent tap from breaking upon tapping.
- 快換式絲攻連接桿
- 緩衝可預防絲攻在攻牙時斷落



Code No. 型號	SPEC. 規格	Capacity 攻牙能力	L	ΦD2	Collets 適用筒夾	
BA2BT30321001A	BT30-WF12	M3-M14	70	36	TC312	TC312B
BA2BT40321001A	BT40-WF12	M3-M14	75	36	TC312	TC312B
BA2BT50321001A	BT50-WF12	M3-M14	85	36	TC312	TC312B
BA2BT30322001A	BT30-WF20	M8-M24	105	53	TC820	TC820B
BA2BT40322001A	BT40-WF20	M8-M24	95	53	TC820	TC820B
BA2BT50322001A	BT50-WF20	M8-M24	105	53	TC820	TC820B
BA2BT40323001A	BT40-WF33	M14-M36	160	78	TC1433	TC1433B
BA2BT50323001A	BT50-WF33	M14-M36	145	78	TC1433	TC1433B

\*Custom-Built products are available on request. \*特製品可依客戶需求訂製 \*Tap collets to be ordered separately. \*絲攻夾頭需另購

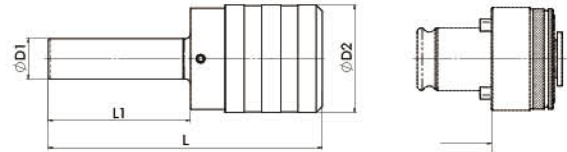
## Quick Change Tapping Chuck 快換式絲攻刀桿

With Length Compensation 伸縮緩衝型 / Straight Shank-Collets 直柄型-筒夾專用



### Feature / 特點

- Quick Change of Tap Adapters.
- Length Compensation could prevent tap from breaking upon tapping.
  - 快換式絲攻連接桿
  - 緩衝可預防絲攻在攻牙時斷落



Code No. 型號	SPEC. 規格	Capacity 攻牙能力	L	L1	ΦD1	ΦD2	Collets 適用筒夾
BA362DD20W001A	D20-WF12	M3-M14	113	70	20	36	TC312/B
BA362DD32W001A	D32-WF12	M3-M14	113	70	32	36	TC312/B
BA361DD20W001A	D20-WF20	M8-M24	135	70	20	53	TC820/B
BA361DD32W001A	D32-WF20	M8-M24	135	70	32	53	TC820/B
BA363DD32W001A	D32-WF33	M14-M36	183	80	32	78	TC1433/B

\*Custom-Built products are available on request. \*特製品可依客戶需求訂製 \*Tap collets to be ordered separately. \*絲攻夾頭需另購

## Quick Change Tapping Chuck 快換式絲攻刀桿

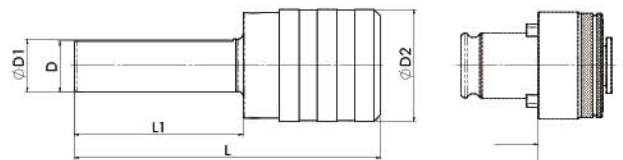
With Length Compensation 伸縮緩衝型

Straight Shank-Side-Lock & CNC Lathe 直柄型-側固及CNC車床專用



### Feature / 特點

- Quick Change of Tap Adapters.
- Length Compensation could prevent tap from breaking upon tapping.
  - 快換式絲攻連接桿
  - 緩衝可預防絲攻在攻牙時斷落



Code No. 型號	SPEC. 規格	Capacity 攻牙能力	L	L1	D	ΦD1	ΦD2	Collets 適用筒夾
BA362DA20W001A	D20A-WF12	M3-M14	113	70	19	20	36	TC312/B
BA362DA32W001A	D32A-WF12	M3-M14	113	70	31	32	36	TC312/B
BA361DA20W001A	D20A-WF20	M8-M24	135	70	19	20	53	TC820/B
BA361DA32W001A	D32A-WF20	M8-M24	135	70	31	32	53	TC820/B
BA363DA32W001A	032A-WF33	M14-M36	183	80	31	32	78	TC1433/B

\*Custom-Built products are available on request. \*特製品可依客戶需求訂製 \*Tap collets to be ordered separately. \*絲攻夾頭需另購



## Quick Change Tapping Chuck 快換式絲攻刀桿

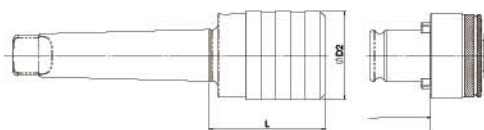
With Length Compensation 伸縮緩衝型 / Morse Taper Shank 莫氏錐度型



### Application / 用途 :

The products are suitable for Radial Drilling Machines, CNC Turning Centers, High-Speed Center Lathes, Drilling Machines, Radial Drilling Machines, Air Tapping Machines, Milling Machines and other machines with reversible spindles.

此產品適用於旋臂式鑽床，高速車床，直立式鑽床，銑床及其它可反轉的主軸



Code No. 型號	SPEC. 規格	Capacity 攻牙能力	L	ØD2	Collets 適用筒夾
BA362MT02W001A	MT2-WF12	M3-M14	48	36	TC312/B
BA362MT03W001A	MT3-WF12	M3-M14	48	36	
BA362MT04W001A	MT4-WF12	M3-M14	49	36	
BA361MT02W001A	MT2-WF20	M8-M24	70	53	TC820/B
BA361MT03W001A	MT3-WF20	M8-M24	70	53	
BA361MT04W001A	MT4-WF20	M8-M24	72	53	
BA363MT04W001A	MT4-WF33	M14-M36	110	78	TC1433/B

\*Custom-Built products are available on request. \*特製品可依客戶需求訂製 \*Tap collets to be ordered separately. \*絲攻夾頭需另購

## Quick Change Tapping Chuck Adapter 快換式連接桿



### Application / 用途 :

The products are suitable for Vertical Tapping Machines, Radial Drilling Machines, Vertical Drilling Machines, Milling Machines and other machines with reversible spindles and Power Tools and Air Tools.

此產品通用於直立式攻牙機，旋臂式鑽床，直立式鑽床，銑床及其它可反轉的主軸及電鑽工具，氣動工具。

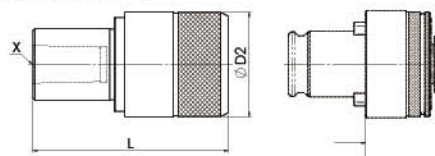
### Feature / 特點

- Specially designd for tapping machine
- Can connect to tap collet.
- Can easily quick change to the tap.
- 攻牙機台專用
- 可連接絲攻筒夾
- 可快速轉換絲攻

Code No. 型號	SPEC. 規格	Capacity 攻牙能力	L	ØD2	X	Collets 適用筒夾
BA362JT06S001A	JT6-SF12	M3-M14	66	32	JT6	TC312/B
BA362BB16S001A	B16-SF12	M3-M14	66	32	B16	
BA362JT25S001A	JT25-SF12	M3-M14	61	32	JT25	
BA362BB12S001A	B12-SF12	M3-M14	61	32	B12	TC820/B
BA361JT06S001A	JT6-SF20	M8-M24	86	50	JT6	
BA361BB18S001A	B18-SF20	M8-M24	92.5	50	B18	
BA361BB16S001A	B16-SF20	M8-M24	86	50	B16	TC820/B
BA363BB18S001A	B18-SF33	M14-M36	138	76	B18	TC1433/B

\*Custom-Built products are available on request. \*特製品可依客戶需求訂製

\*Tap collets to be ordered separately. \*絲攻夾頭需另購

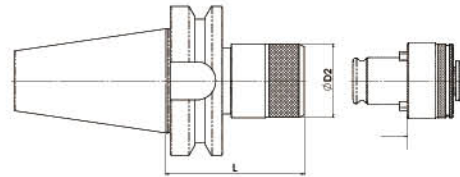


## Quick Change Tapping Chuck 快換式絲攻刀桿



### Feature / 特點

- Quick Change of Tap Adapters.
- Special designed for tapping.
- 快換式絲攻連接桿
- 絲攻專用



Code No. 型號	SPEC. 規格	Capacity 攻牙能力	L	ΦD2	Collets 適用筒夾
BA2BT40311001A	BT40-SF12	M3-M14	60	32	TC312/B
BA2BT50311001A	BT50-SF12	M3-M14	75	32	TC312/B
BA2BT40312001A	BT40-SF20	M8-M24	82	50	TC820/B
BA2BT50312001A	BT50-SF20	M8-M24	93	50	TC820/B
BA2BT40313001A	BT40-SF33	M14-M36	115	76	TC1433/B
BA2BT50313001A	BT50-SF33	M14-M36	126	76	TC1433/B

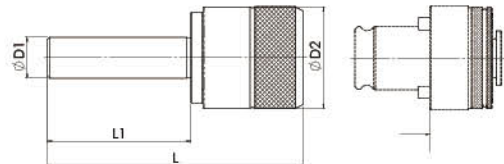
\*Custom-Built products are available on request. \*特製品可依客戶需求訂製 \*Tap collets to be ordered separately. \*絲攻夾頭需另購

## Quick Change Tapping Chuck 快換式絲攻刀桿 Straight Shank-Collets 直柄型-筒夾專用



### Feature / 特點

- Quick Change of Tap Adapters.
- Special designed for tapping.
- 快換式絲攻連接桿
- 絲攻專用



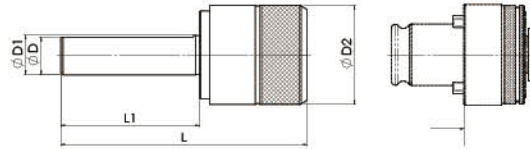
Code No. 型號	SPEC. 規格	Capacity 攻牙能力	L	L1	ΦD1	ΦD2	Collets 適用筒夾
BA362DD20S001A	D20-SF12	M3-M14	104	70	20	32	TC312/B
BA362DD32S001A	D32-SF12	M3-M14	106	70	32		
BA361DD20S001A	D20-SF20	M8-M24	124	70	20	50	TC820/B
BA361DD32S001A	D32-SF20	M8-M24	124	70	32		
BA363DD25S001A	D25-SF33	M14-M36	169	70	25	76	TC1433/B
BA363DD30S001A	D30-SF33	M14-M36	169	60	30		
BA363DD32S001A	D32-SF33	M14-M36	169	70	32		

\*Custom-Built products are available on request. \*特製品可依客戶需求訂製 \*Tap collets to be ordered separately. \*絲攻夾頭需另購



## Quick Change Tapping Chuck 快換式絲攻刀桿

Straight Shank-Side-Lock & CNC Lathe 直柄型-側固及CNC車床專用



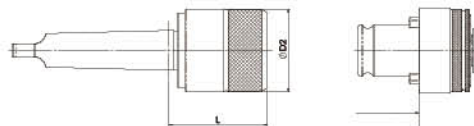
Code No. 型號	SPEC. 規格	Capacity 攻牙能力	L	L1	D	ΦD1	ΦD2	Collets 適用筒夾
BA362DA20S001A	D20A-SF12	M 3-M14	104	70	19	20	32	TC312/B
BA362DA32S001A	D32A-SF12	M 3-M14	106	70	31	32	32	TC312/B
BA361DA20S001A	D20A-SF20	M 8-M24	124	70	19	20	50	TC820/B
BA361DA32S001A	D32A-SF20	M 8-M24	124	70	31	32	50	TC820/B
BA363DA25S001A	D25A-SF33	M14-M36	169	70	24	25	76	TC1433/B
BA363DA32S001A	D32A-SF33	M14-M36	169	70	31	32	76	TC1433/B

\*Custom-Built products are available on request. \*特製品可依客戶需求訂製 \*Tap collets to be ordered separately. \*絲攻夾頭需另購



## Quick Change Tapping Chuck 快換式絲攻刀桿

Morse Taper Shank 莫氏錐度型



Code No. 型號	SPEC. 規格	Capacity 攻牙能力	L	ΦD2	Collets 適用筒夾
BA362MT02S001A	MT2-SF12	M 3-M14	39	32	TC312/B
BA362MT03S001A	MT3-SF12	M 3-M14	39	32	
BA362MT04S001A	MT4-SF12	M 3-M14	40.5	32	
BA361MT02S001A	MT2-SF20	M 8-M24	59	50	TC820/B
BA361MT03S001A	MT3-SF20	M 8-M24	59	50	
BA361MT04S001A	MT4-SF20	M 8-M24	60.5	50	
BA363MT03S001A	MT3-SF33	M14-M36	104	76	TC1433/B
BA363MT04S001A	MT4-SF33	M14-M36	105	76	

\*Custom-Built products are available on request. \*特製品可依客戶需求訂製

\*Tap collets to be ordered separately. \*絲攻夾頭需另購

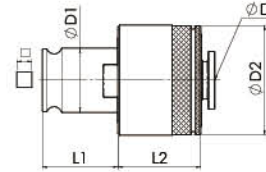


## Quick Change Tap Collets with Overload Clutch 快換式絲攻夾頭 - 扭力型 JIS Type



■ Feature / 特性

- Overload Clutch is designed to prevent tap from breaking upon tapping.
- 扭力型絲攻設計，可預防絲攻在攻牙時斷落



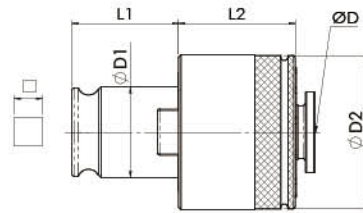
Code No. 型號	TC 312 JIS Tap			Tap Shank 絲攻尺寸		Capacity 攻牙能力	L1 (mm)	L2 (mm)	ΦD1 (mm)	ΦD2 (mm)
				ΦD 柄徑	口四方孔					
BA352JS020101A	M2			3.0	2.5	M3-M14	22	25	19	32
BA352JS030101A	M3		#5, #6	4.0	3.2					
BA352JS040101A	M4	M4.5	#8	5.0	4.0					
BA352JS050101A	M5	M5.5	#10	5.5	4.5					
BA352JS060101A	M6		UNC 1/4	6.0	4.5					
BA352JS080101A			UNC 5/16	6.1	5.0					
BA352JS080102A	M8	M7		6.2	5.0					
BA352JS090101A	M10	M9	UNC 3/8	7.0	5.5					
BA352JS110101A		M11	UNC 7/16	8.0	6.0					
BA352JS120101A	M12			8.5	6.5					
BA352JS130101A			UNC 1/2	9.0	7.0					
BA352JS140101A	M14	M15	UNC 9/16	10.5	8.0					
Code No. 型號	TC 820 JIS Tap			Tap Shank 絲攻尺寸		Capacity 攻牙能力	L1 (mm)	L2 (mm)	ΦD1 (mm)	ΦD2 (mm)
				ΦD 柄徑	口四方孔					
BA351JS050101A	M5	M5.5	#10	5.5	4.5	M8-M24	36	30.5	31	50
BA351JS060101A	M6		UNC 1/4	6.0	4.5					
BA351JS080102A			UNC 5/16	6.1	5.0					
BA351JS080101A	M8	M7		6.2	5.0					
BA351JS100101A	M10	M9	UNC 3/8	7.0	5.5					
BA351JS110101A		M11	UNC 7/16	8.0	6.0					
BA351JS120101A	M12			8.5	6.5					
BA351JS130101A			UNC 1/2	9.0	7.0					
BA351JS140101A	M14	M15	UNC 9/16	10.5	8.0					
BA351JS160101A			UNC 5/8	12.0	9.0					
BA351JS160102A	M16			12.5	10.0					
BA351JS180101A	M18		UNC 3/4	14.0	11.0					
BA351JS200101A	M20			15.0	12.0					
BA351JS220101A	M22		UNC 7/8	17.0	13.0					
BA351JS240101A	M24	M25		19.0	15.0					
Code No. 型號	TC 1433 JIS Tap			Tap Shank 絲攻尺寸						
				ΦD 柄徑	口四方孔					
BA353JS140101A	M14	M15	UNC 9/16	10.5	8.0	M14-M36	56	41	48	72
BA353JS160101A			UNC 5/8	12.0	9.0					
BA353JS160001A	M16			12.5	10.0					
BA353JS170101A		M17		13.0	10.0					
BA353JS180101A	M18		UNC 3/4	14.0	11.0					
BA353JS200101A	M20			15.0	12.0					
BA353JS220101A	M22		UNC 7/8	17.0	13.0					
BA353JS240101A	M24	M25		19.0	15.0					
BA353JS260101A	M27	M26	UNC1	20.0	15.0					
BA353JS280101A	M28			21.0	17.0					
BA353JS290101A			UNC 1 1/8	22.0	17.0					
BA353JS300101A	M30			23.0	17.0					
BA353JS320101A	M32		UNC 1 1/4	24.0	19.0					
BA353JS330101A	M33			25.0	19.0					
BA353JS350101A	M35	M34	UNC 1 3/8	26.0	21.0					
BA353JS360101A	M36			28.0	21.0					

\* Custom-Built products are available on request. \* 特製品可依客戶需求訂製

## Quick Change Tap Collets with Overload Clutch 快換式絲攻夾頭 - 扭力型 DIN 371 Type

■ Feature / 特性

- Overload Clutch is designed to prevent tap from breaking upon tapping
- 扭力型絲攻設計，可預防絲攻在攻牙時斷落



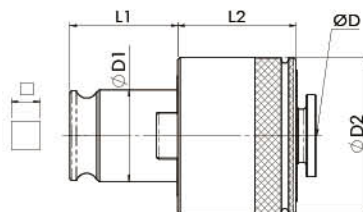
Code No. 型號	TC312 DIN371 Tap	Tap Shank 絲攻尺寸		Capacity 攻牙能力	L1 (mm)	L2 (mm)	$\phi D1$ (mm)	$\phi D2$ (mm)
		$\phi D$ 柄徑	□四方孔					
BA352D1020101A	M1~M1.8	2.5	2.1	M3~M14	22	25	19	32
BA352D1020102A	M2~M2.5	2.8	2.1					
BA352D1030101A	M3	3.5	2.7					
BA352D1040101A	M3.5	4.0	3.0					
BA352D1040102A	M4	4.5	3.4					
BA352D1050101A	M4.5	6.0	4.9					
BA352D1050102A	M5	6.0	4.9					
BA352D1060101A	M6	6.0	4.9					
BA352D1080101A	M8	8.0	6.2					
BA352D1100101A	M10	10.0	8.0					

Code No. 型號	TC820 DIN371 Tap	Tap Shank 絲攻尺寸		Capacity 攻牙能力	L1 (mm)	L2 (mm)	$\phi D1$ (mm)	$\phi D2$ (mm)
		$\phi D$ 柄徑	□四方孔					
BA351D1050101A	M 5	6.0	4.9	M8~M24	36	30.5	31	50
BA351D1060101A	M 6	6.0	4.9					
BA351D1080101A	M 8	8.0	6.2					
BA351D1100101A	M10	10.0	8.0					

\* Custom-Built products are available on request. \* 特製品可依客戶需求訂製



## Quick Change Tap Collets with Overload Clutch 快換式絲攻夾頭 - 扭力型 DIN 376 Type



Code No. 型號	TC 312 DIN 376 Tap	Tap Shank 絲攻尺寸		Capacity 攻牙能力	L1 (mm)	L2 (mm)	ØD1 (mm)	ØD2 (mm)
		ΦD 柄徑	□四方孔					
BA352D6040101A	M3.5	2.5	2.1	M3-M14	22	25	19	32
BA352D6040102A	M 4	2.8	2.1					
BA352D6050101A	M4.5	3.5	2.7					
BA352D6050102A	M 5	3.5	2.7					
BA352D6060101A	M 6	4.5	3.4					
BA352D6070101A	M 7	5.5	4.3					
BA352D6080101A	M 8	6.0	4.9					
BA352D6100101A	M10	7.0	5.5					
BA352D6120101A	M12	9.0	7.0					
BA352D6140101A	M14	11.0	9.0					

Code No. 型號	TC 820 DIN 376 Tap	Tap Shank 絲攻尺寸		Capacity 攻牙能力	L1 (mm)	L2 (mm)	ØD1 (mm)	ØD2 (mm)
		ΦD 柄徑	□四方孔					
BA351D6080101A	M 8	6.0	4.9	M8-M24	36	30.5	31	50
BA351D6100101A	M10	7.0	5.5					
BA351D6120101A	M12	9.0	7.0					
BA351D6140101A	M14	11.0	9.0					
BA351D6160101A	M16	12.0	9.0					
BA351D6180101A	M18	14.0	11.0					
BA351D6200101A	M20	16.0	12.0					
BA351D6220101A	M22	18.0	14.5					
BA351D6240101A	M24	18.0	14.5					

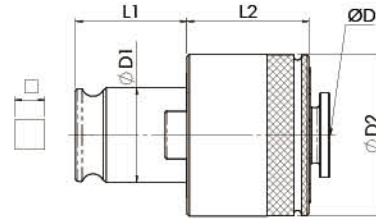
Code No. 型號	TC 1433 DIN 376 Tap	Tap Shank 絲攻尺寸		Capacity 攻牙能力	L1 (mm)	L2 (mm)	ØD1 (mm)	ØD2 (mm)
		ΦD 柄徑	□四方孔					
BA353D6140101A	M14	11.0	9.0	M14-M36	56	41	48	72
BA353D6160101A	M16	12.0	9.0					
BA353D6180101A	M18	14.0	11.0					
BA353D6200101A	M20	16.0	12.0					
BA353D6220101A	M22	18.0	14.5					
BA353D6240101A	M24	18.0	14.5					
BA353D6270101A	M27	20.0	16.0					
BA353D6300101A	M30	22.0	18.0					
BA353D6330101A	M33	25.0	20.0					
BA353D6360101A	M36	28.0	22.0					

\* Custom-Built products are available on request. \* 特製品可依客戶需求訂製

## Quick Change Tap Collets with Overload Clutch

### 快換式絲攻夾頭 - 扭力型

ISO 529 Type



Code No. 型號	TC 312 ISO 529 Tap	Tap Shank 絲攻尺寸		Capacity 攻牙能力	L1 (mm)	L2 (mm)	ØD1 (mm)	ØD2 (mm)
		ΦD 柄徑	□四方孔					
BA352S5010101A	M1-M2	2.5	2.0	M3-M14	22	25	19	32
BA352S5020101A	M2.2-M2.5	2.8	2.24					
BA352S5030101A	M 3	3.15	2.5					
BA352S5040101A	M3.5	3.55	2.8					
BA352S5040102A	M 4	4.0	3.15					
BA352S5050101A	M4.5	4.5	3.55					
BA352S5050102A	M 5	5.0	4.0					
BA352S5060101A	M 6	6.3	5.0					
BA352S5070101A	M 7	7.1	5.6					
BA352S5080101A	M 8	8.0	6.3					
BA352S5090101A	M 9	9.0	7.1					
BA352S5100101A	M10	10.0	8.0					

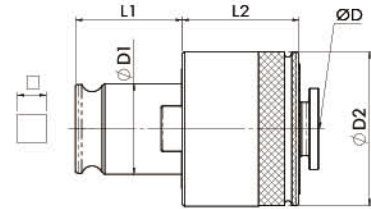
Code No. 型號	TC 820 ISO 529 Tap	Tap Shank 絲攻尺寸		Capacity 攻牙能力	L1 (mm)	L2 (mm)	ØD1 (mm)	ØD2 (mm)
		ΦD 柄徑	□四方孔					
BA351S5060101A	M 6	6.3	5.0	M8-M24	36	30.5	31	50
BA351S5070101A	M 7	7.1	5.6					
BA351S5080101A	M 8	8.0	6.3					
BA351S5090101A	M 9	9.0	7.1					
BA351S5100101A	M10	10.0	8.0					

\* Custom-Built products are available on request. \* 特製品可依客戶需求訂製

## Quick Change Tap Collets with Overload Clutch

### 快換式絲攻夾頭 - 扭力型

ISO 529/ 2283 Type



Code No. 型號	TC312 ISO 529/ 2283 Tap	Tap Shank 絲攻尺寸		Capacity 攻牙能力	L1 (mm)	L2 (mm)	ΦD1 (mm)	ΦD2 (mm)
		ΦD 柄徑	口四方孔					
BA352S2030101A	M 3	2.24	1.8	M3~M14	22	25	19	32
BA352S2040101A	M3.5	2.5	2.0					
BA352S2040102A	M 4	3.15	2.5					
BA352S2050102A	M4.5	3.55	2.8					
BA352S2050101A	M 5	4.0	3.15					
BA352S2060101A	M 6	4.5	3.55					
BA352S2070101A	M 7	5.6	4.5					
BA352S2080101A	M 8	6.3	5.0					
BA352S2090101A	M 9	7.1	5.6					
BA352S2100101A	M10	8.0	6.3					
BA352S2120101A	M12	9.0	7.1					

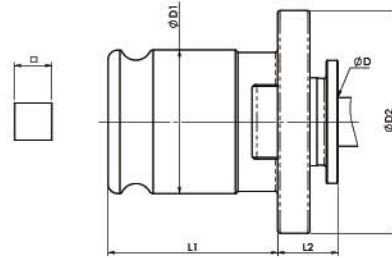
Code No. 型號	TC820 ISO 529/ 2283 Tap	Tap Shank 絲攻尺寸		Capacity 攻牙能力	L1 (mm)	L2 (mm)	ΦD1 (mm)	ΦD2 (mm)
		ΦD 柄徑	口四方孔					
BA351S2080101A	M 8	6.3	5.0	M8~M24	36	30.5	31	50
BA351S2330101A	M 9	7.1	5.6					
BA351S2100101A	M10	8.0	6.3					
BA351S2120101A	M12	9.0	7.1					
BA351S2140101A	M14	11.2	9.0					
BA351S2160101A	M16	12.5	10.0					
BA351S2180101A	M18	14.0	11.2					
BA351S2200101A	M20	14.0	11.2					
BA351S2220101A	M22	16.0	12.5					
BA351S2240101A	M24	18.0	14.0					

Code No. 型號	TC 1433 ISO 529/ 2283 Tap	Tap Shank 絲攻尺寸		Capacity 攻牙能力	L1 (mm)	L2 (mm)	ΦD1 (mm)	ΦD2 (mm)
		ΦD 柄徑	口四方孔					
BA353S2140101A	M14	11.2	9.0	M14~M36	56	41	48	72
BA353S2160101A	M16	12.5	10.0					
BA353S2180101A	M18	14.0	11.2					
BA353S2200101A	M20	14.0	11.2					
BA353S2220101A	M22	16.0	12.5					
BA353S2240101A	M24	18.0	14.0					
BA353S2270100A	M27	20.0	16.0					
BA353S2300101A	M30	20.0	16.0					
BA353S2330101A	M33	22.4	18.0					
BA353S2360101A	M36	25.0	20.0					

\* Custom-Built products are available on request. \* 特製品可依客戶需求訂製



## Quick Change Tap Collets-Rigid Type 快換式絲攻 - 剛性 JIS Type



Code No. 型號	TC312B JIS Tap			Tap Shank 絲攻尺寸		Capacity 攻牙能力	L1 (mm)	L2 (mm)	$\Phi D1$ (mm)	$\Phi D2$ (mm)
				$\Phi D$ 柄徑	口四方孔					
BA354JS020101A	M2			3.0	2.5	M3~M14	22	7	19	30
BA354JS030101A	M3		#5,#6	4.0	3.2					
BA354JS040101A	M4	M4.5	#8	5.0	4.0					
BA354JS050101A	M5	M5.5	#10	5.5	4.5					
BA354JS060101A	M6		UNC 1/4	6.0	4.5					
BA354JS080102A			UNC 5/16	6.1	5.0					
BA354JS080101A	M8	M7		6.2	5.0					
BA354JS100101A	M10	M9	UNC 3/8	7.0	5.5					
BA354JS110101A		M11	UNC 7/16	8.0	6.0					
BA354JS120101A	M12			8.5	6.5					
BA354JS130101A			UNC 1/2	9.0	7.0					
BA354JS140101A	M14	M15	UNC 9/16	10.5	8.0					

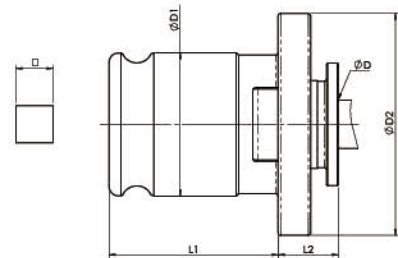
Code No. 型號	TC820B JIS Tap			Tap Shank 絲攻尺寸		Capacity 攻牙能力	L1 (mm)	L2 (mm)	$\Phi D1$ (mm)	$\Phi D2$ (mm)
				$\Phi D$ 柄徑	口四方孔					
BA355JS080101A	M8	M7		6.2	5.0	M8~M24	36	11	31	48
BA355JS100101A	M10	M9	UNC 3/8	7.0	5.5					
BA355JS110101A		M11	UNC 7/16	8.0	6.0					
BA355JS120001A	M12			8.5	6.5					
BA355JS130101A			UNC 1/2	9.0	7.0					
BA355JS140101A	M14	M15	UNC 9/16	10.5	8.0					
BA355JS160101A			UNC 5/8	12.0	9.0					
BA355JS160102A	M16			12.5	10.0					
BA355JS170101A		M17		13.0	10.0					
BA355JS180101A	M18		UNC 3/4	14.0	11.0					
BA355JS200101A	M20			15.0	12.0					
BA355JS220101A	M22		UNC 7/8	17.0	13.0					
BA355JS240101A	M24	M25		19.0	15.0					

Code No. 型號	TC1433B JS Tap			Tap Shank 絲攻尺寸		Capacity 攻牙能力	L1 (mm)	L2 (mm)	ΦD1 (mm)	ΦD2 (mm)
				ΦD 柄徑	口四方孔					
BA356JS140101A	M14	M15	UNC 9/16	10.5	8.0	M14-M36	56	14	48	70
BA356JS160102A			UNC 5/8	12.0	9.0					
BA356JS160101A	M16			12.5	10.0					
BA356JS170101A		M17		13.0	10.0					
BA356JS180101A	M18		UNC 3/4	14.0	11.0					
BA356JS200101A	M20			15.0	12.0					
BA356JS220101A	M22		UNC 7/8	17.0	13.0					
BA356JS240101A	M24	M25		19.0	15.0					
BA356JS270101A	M27	M26	UNC1	20.0	15.0					
BA356JS280101A	M28			21.0	17.0					
BA356JS290101A			UNC 1 1/8	22.0	17.0					
BA356JS300101A	M30			23.0	17.0					
BA356JS320101A	M32		UNC 1 1/4	24.0	19.0					
BA356JS330101A	M33			25.0	19.0					
BA356JS350101A	M35	M34	UNC 1 3/8	26.0	21.0					
BA356JS360101A	M36			28.0	21.0					

\* Custom-Built products are available on request. \* 特製品可依客戶需求訂製



## Quick Change Tap Collets-Rigid Type 快換式絲攻 - 剛性 DIN 371 Type

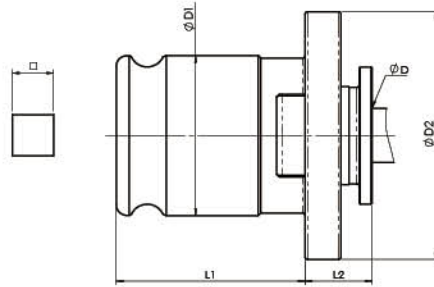


Code No. 型號	TC312B DIN371 Tap	Tap Shank 絲攻尺寸		Capacity 攻牙能力	L1 (mm)	L2 (mm)	ΦD1 (mm)	ΦD2 (mm)
		ΦD 柄徑	口四方孔					
BA354D1020101A	M1-M1.8	2.5	2.1	M3-M14	22	7	19	30
BA354D1030102A	M2-M2.5	2.8	2.1					
BA354D1030101A	M3	3.5	2.7					
BA354D1040101A	M3.5	4.0	3.0					
BA354D1040102A	M4	4.5	3.4					
BA354D1050102A	M4.5	6.0	4.9					
BA354D1050101A	M5	6.0	4.9					
BA354D1060101A	M6	6.0	4.9					
BA354D1080101A	M8	8.0	6.2					
BA354D1100101A	M10	10	8.0					

Code No. 型號	TC820B DIN371 Tap	Tap Shank 絲攻尺寸		Capacity 攻牙能力	L1 (mm)	L2 (mm)	ΦD1 (mm)	ΦD2 (mm)
		ΦD 柄徑	口四方孔					
BA355D1050102A	M4.5	6.0	4.9	M8-M24	36	11	31	48
BA355D1050101A	M5	6.0	4.9					
BA355D1060101A	M6	6.0	4.9					
BA355D1080101A	M8	8.0	6.2					
BA355D1100101A	M10	10.0	8.0					

\* Custom-Built products are available on request. \* 特製品可依客戶需求訂製

## Quick Change Tap Collets-Rigid Type 快換式絲攻 - 剛性 DIN 376 Type



Code No. 型號	TC312B DIN376 Tap	Tap Shank 絲攻尺寸		Capacity 攻牙能力	L1 (mm)	L2 (mm)	$\phi D1$ (mm)	$\phi D2$ (mm)
		$\phi D$ 柄徑	□四方孔					
BA354D6040101A	M3.5	2.5	2.1	M3-M14	22	7	19	30
BA354D6040102A	M4	2.8	2.1					
BA354D6050101A	M4.5	3.5	2.7					
BA354D6050102A	M5	3.5	2.7					
BA354D6060101A	M6	4.5	3.4					
BA354D6070101A	M7	5.5	4.3					
BA354D6080101A	M8	6.0	4.9					
BA354D6100101A	M10	7.0	5.5					
BA354D6120101A	M12	9.0	7.0					
BA354D6140101A	M14	11.0	9.0					

Code No. 型號	TC820B DIN376 Tap	Tap Shank 絲攻尺寸		Capacity 攻牙能力	L1 (mm)	L2 (mm)	$\phi D1$ (mm)	$\phi D2$ (mm)
		$\phi D$ 柄徑	□四方孔					
BA355D6080101A	M8	6.0	4.9	M8-M24	36	11	31	48
BA355D6100101A	M10	7.0	5.5					
BA355D6120101A	M12	9.0	7.0					
BA355D6140101A	M14	11.0	9.0					
BA355D6160101A	M16	12.0	9.0					
BA355D6180101A	M18	14.0	11.0					
BA355D6200101A	M20	16.0	12.0					
BA355D6220101A	M22	18.0	14.5					
BA355D6240101A	M24	18.0	14.5					

Code No. 型號	TC1433B DIN376 Tap	Tap Shank 絲攻尺寸		Capacity 攻牙能力	L1 (mm)	L2 (mm)	$\phi D1$ (mm)	$\phi D2$ (mm)
		$\phi D$ 柄徑	□四方孔					
BA356D6140101A	M14	11.0	9.0	M14-M36	56	14	48	70
BA356D6160101A	M16	12.0	9.0					
BA356D6180101A	M18	14.0	11.0					
BA356D6200101A	M20	16.0	12.0					
BA356D6220101A	M22	18.0	14.5					
BA356D6240101A	M24	18.0	14.5					
BA356D6270101A	M27	20.0	16.0					
BA356D6300101A	M30	22.0	18.0					
BA356D6330101A	M33	25.0	20.0					
BA356D6360101A	M36	28.0	22.0					

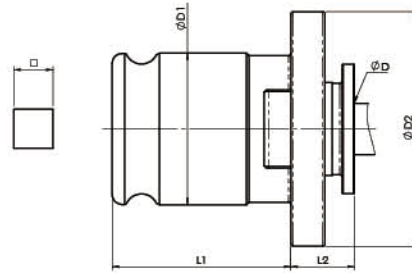
\* Custom-Built products are available on request. \* 特製品可依客戶需求訂製



## Quick Change Tap Collets-Rigid Type

### 快換式絲攻 - 剛性

ISO 529 Type

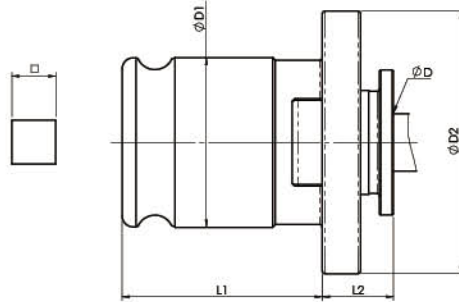


Code No. 型號	TC312B ISO 529 TAP	Tap Shank 絲攻尺寸		Capacity 攻牙能力	L1 (mm)	L2 (mm)	$\phi D1$ (mm)	$\phi D2$ (mm)
		$\phi D$ 柄徑	口四方孔					
BA354S5020101A	M1-M2	2.5	2.0	M3-M14	22	7	19	30
BA354S5030101A	M2.2-M2.5	2.8	2.24					
BA354S5030103A	M 3	3.15	2.5					
BA354S5040102A	M3.5	3.55	2.8					
BA354S5040101A	M 4	4.0	3.15					
BA354S5050101A	M4.5	4.5	3.55					
BA354S5050102A	M 5	5.0	4.0					
BA354S5060101A	M 6	6.3	5.0					
BA354S5070101A	M 7	7.1	5.6					
BA354S5080101A	M 8	8.0	6.3					
BA354S5090101A	M 9	9.0	7.1					
BA354S5100101A	M10	10.0	8.0					

Code No. 型號	TC820B ISO 529 TAP	Tap Shank 絲攻尺寸		Capacity 攻牙能力	L1 (mm)	L2 (mm)	$\phi D1$ (mm)	$\phi D2$ (mm)
		$\phi D$ 柄徑	口四方孔					
BA355S5060101A	M 6	6.3	5.0	M8-M24	36	11	31	48
BA355S5070101A	M 7	7.1	5.6					
BA355S5080101A	M 8	8.0	6.3					
BA355S5090101A	M 9	9.0	7.1					
BA355S5100101A	M10	10.0	8.0					

\* Custom-Built products are available on request. \* 特製品可依客戶需求訂製

## Quick Change Tap Collets-Rigid Type 快換式絲攻 - 剛性 ISO 529/2283 Type



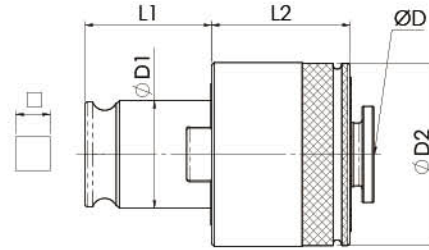
Code No. 型號	TC312B ISO 529/ 2283 Tap	Tap Shank 絲攻尺寸		Capacity 攻牙能力	L1 (mm)	L2 (mm)	$\phi D1$ (mm)	$\phi D2$ (mm)
		$\phi D$ 柄徑	□四方孔					
BA354S2030101A	M 3	2.24	1.8	M3-M14	22	7	19	30
BA354S2040101A	M3.5	2.5	2.0					
BA354S2040102A	M 4	3.15	2.5					
BA354S2050102A	M4.5	3.55	2.8					
BA354S2050101A	M 5	4.0	3.15					
BA354S2060101A	M 6	4.5	3.55					
BA354S2070101A	M 7	5.6	4.5					
BA354S2080101A	M 8	6.3	5.0					
BA354S2090101A	M 9	7.1	5.6					
BA354S2100101A	M10	8.0	6.3					
BA354S2120101A	M12	9.0	7.1					
BA354S2140101A	M14	11.2	9.0					

Code No. 型號	TC820B ISO 529/ 2283 Tap	Tap Shank 絲攻尺寸		Capacity 攻牙能力	L1 (mm)	L2 (mm)	$\phi D1$ (mm)	$\phi D2$ (mm)
		$\phi D$ 柄徑	□四方孔					
BA355S2080101A	M 8	6.3	5.0	M8-M24	36	11	31	48
BA355S2090101A	M 9	7.1	5.6					
BA355S2100101A	M10	8.0	6.3					
BA355S2120101A	M12	9.0	7.1					
BA355S2140101A	M14	11.2	9.0					
BA355S2160101A	M16	12.5	10.0					
BA355S2180101A	M18	14.0	11.2					
BA355S2200101A	M20	14.0	11.2					
BA355S2220101A	M22	16.0	12.5					
BA355S2240101A	M24	18.0	14.0					

Code No. 型號	TC1433B ISO 529/ 2283 Tap	Tap Shank 絲攻尺寸		Capacity 攻牙能力	L1 (mm)	L2 (mm)	$\phi D1$ (mm)	$\phi D2$ (mm)
		$\phi D$ 柄徑	□四方孔					
BA356S2140101A	M14	11.2	9.0	M14-M36	56	14	48	70
BA356S2160101A	M16	12.5	10.0					
BA356S2180101A	M18	14.0	11.2					
BA356S2200101A	M20	14.0	11.2					
BA356S2180102A	M22	16.0	12.5					
BA356S2240101A	M24	18.0	14.0					
BA356S2270101A	M27	20.0	16.0					
BA356S2300101A	M30	20.0	16.0					
BA356S2330101A	M33	22.4	18.0					
BA356S2360101A	M36	25.0	20.0					

\* Custom-Built products are available on request. \* 特製品可依客戶需求訂製

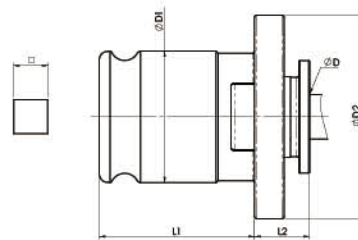
## Quick Change Tap Collets with Overload Clutch 快換式絲攻夾頭 - 扭力型 JIS Type



Code No. 型號	TC312 JIS Tap	Tap Shank 絲攻尺寸		Capacity 攻牙能力	L1 (mm)	L2 (mm)	ØD1 (mm)	ØD2 (mm)
		ΦD 柄徑	□四方孔					
BA352JS10P101A	PT 1/8	8.0	6.0	PT 1/8~PT 1/4	22	25	19	32
BA352JS14P101A	PT 1/4	11.0	9.0					
Code No. 型號	TC820 JIS Tap	Tap Shank 絲攻尺寸		Capacity 攻牙能力	L1 (mm)	L2 (mm)	ØD1 (mm)	ØD2 (mm)
		ΦD 柄徑	□四方孔					
BA351JS13P101A	PT 1/8	8.0	6.0	PT 1/8~PT 1/2	36	30.5	31	50
BA351JS14P101A	PT 1/4	11.0	9.0					
BA351JS18P101A	PT 3/8	14.0	11.0					
BA351JS220102A	PT 1/2	18.0	14.0					
Code No. 型號	TC1433 JIS Tap	Tap Shank 絲攻尺寸		Capacity 攻牙能力	L1 (mm)	L2 (mm)	ØD1 (mm)	ØD2 (mm)
		ΦD 柄徑	□四方孔					
BA353JS14P101A	PT 1/4	11.0	9.0	PT 1/4~PT 1"	56	41	48	72
BA353JS18P101A	PT 3/8	14.0	11.0					
BA353JS22P101A	PT 1/2	18.0	14.0					
BA353JS30P101A	PT 3/4	23.0	17.0					
BA353JS34P101A	PT 1	26.0	21.0					

\* Custom-Built products are available on request. \* 特製品可依客戶需求訂製

## Quick Change Tap Collets-Rigid Type 快換式絲攻 - 剛性 JIS Type



Code No. 型號	TC312B JIS Tap	Tap Shank 絲攻尺寸		Capacity 攻牙能力	L1 (mm)	L2 (mm)	ØD1 (mm)	ØD2 (mm)
		ΦD 柄徑	□四方孔					
BA354JS08P101A	PT 1/8	8.0	6.0	PT 1/8~PT 1/4	22	7	19	30
BA354JS14P101A	PT 1/4	11.0	9.0					
Code No. 型號	TC820B JIS Tap	Tap Shank 絲攻尺寸		Capacity 攻牙能力	L1 (mm)	L2 (mm)	ØD1 (mm)	ØD2 (mm)
		ΦD 柄徑	□四方孔					
BA355JS10P101A	PT 1/8	8.0	6.0	PT 1/8~PT 1/2	36	11	31	48
BA355JS14P101A	PT 1/4	11.0	9.0					
BA355JS18P101A	PT 3/8	14.0	11.0					
BA355JS22P101A	PT 1/2	18.0	14.0					
Code No. 型號	TC1433B JIS Tap	Tap Shank 絲攻尺寸		Capacity 攻牙能力	L1 (mm)	L2 (mm)	ØD1 (mm)	ØD2 (mm)
		ΦD 柄徑	□四方孔					
BA356JS14P101A	PT 1/4	11.0	9.0	PT 1/4~PT 1"	56	14	48	70
BA356JS18P101A	PT 3/8	14.0	11.0					
BA356JS22P101A	PT 1/2	18.0	14.0					
BA356JS30P101A	PT 3/4	23.0	17.0					
BA356JS34P101A	PT 1	26.0	21.0					

\* Custom-Built products are available on request. \* 特製品可依客戶需求訂製

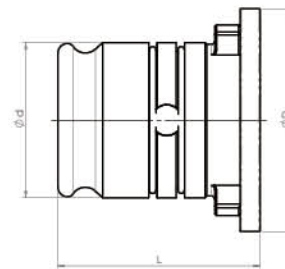


## Tap Chuck Reducer 絲攻轉接頭

■ Feature / 特點

The Tap Chuck Adapter Is designed for transferring variety tapping machine system. It is easy to quick change for users and apply in different system tools.

絲攻轉接頭之設計目的是為了轉換各種不同系統的絲攻機台使用者可容易快換並節省工具成本

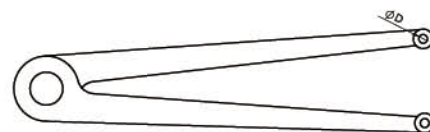


Code No. 型號	SPEC. 規格	L	$\phi D$	$\phi d$	Collets 適用筒夾	Weight(g) 重量
BA360TR020001A	TC820 → TC312	41.2	48	31	TC312/B	168
BA360TR030001A	TC1433 → TC820	62.6	69	48	TC820/B	558

\*Custom-Built products are available on request. \*特製品可依客戶需求訂製

\*Tap collets to be ordered separately. \*絲攻夾頭需另購

## Adjustable Pin Wrenches 調整板手

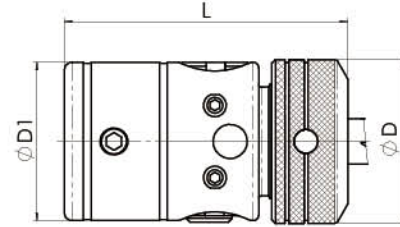
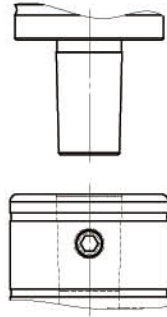


Code No. 型號	SPEC. 規格	$\phi D$	Collets 適用筒夾
BTSTA000101A	7-40	2.5	TC312 TC820
BTSTA000102A	11-60	4	TC1433

\*Custom-Built products are available on request. \*特製品可依客戶需求訂製

## Universal Tap Chuck 泛用型剛性夾頭

With Inner Taper Hole 內孔型



Code No. 型號	Size 尺寸	Capacity 攻牙能力		TAPER Mount No. DIN or Jacobs 錐孔組接型號	L (mm)	ΦD (mm)	ΦD1 (mm)
		mm	inch				
BA35021J90101A	1/2"	M3-M12	1/8"~1/2"	JT6	72.5	43	42
BA35021J30101A	1/2"	M3-M12	1/8"~1/2"	JT2	72.5	43	42
BA35021J40101A	1/2"	M3-M12	1/8"~1/2"	JT2S	72.5	43	42
BA35021B40102A	1/2"	M3-M12	1/8"~1/2"	B16	72.5	43	42
BA35085J50101A	5/8"	M3-M16	1/8"~5/8"	JT3	82.5	49	46
BA35085J90101A	5/8"	M3-M16	1/8"~5/8"	JT6	82.5	49	46
BA35085B60101A	5/8"	M3-M16	1/8"~5/8"	B18	82.5	49	46
BA35043J50101A	3/4"	M9-M18	3/8"~3/4"	JT3	82.5	51	49
BA35043J90101A	3/4"	M9-M18	3/8"~3/4"	JT6	82.5	51	49
BA35043B60101A	3/4"	M9-M18	3/8"~3/4"	B18	82.5	51	49

\*Custom-Built products are available on request. \*特製品可依客戶需求訂製

## Universal Tap Chuck 泛用型剛性夾頭

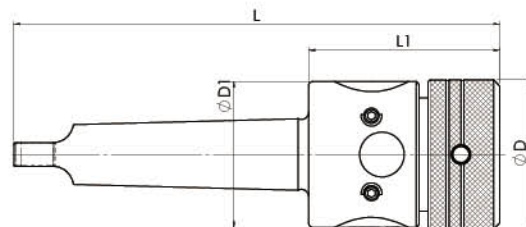
Morse Taper Shank 莫氏錐度型



### ■ Feature / 特點

The products are suitable for CNC Machining Centers, CNC Turning Centers, High-Speed Center Lathes, Drilling Machines, Radial Drilling Machines, Air Tapping Machines, Milling Machines and other machines with reversible spindles.

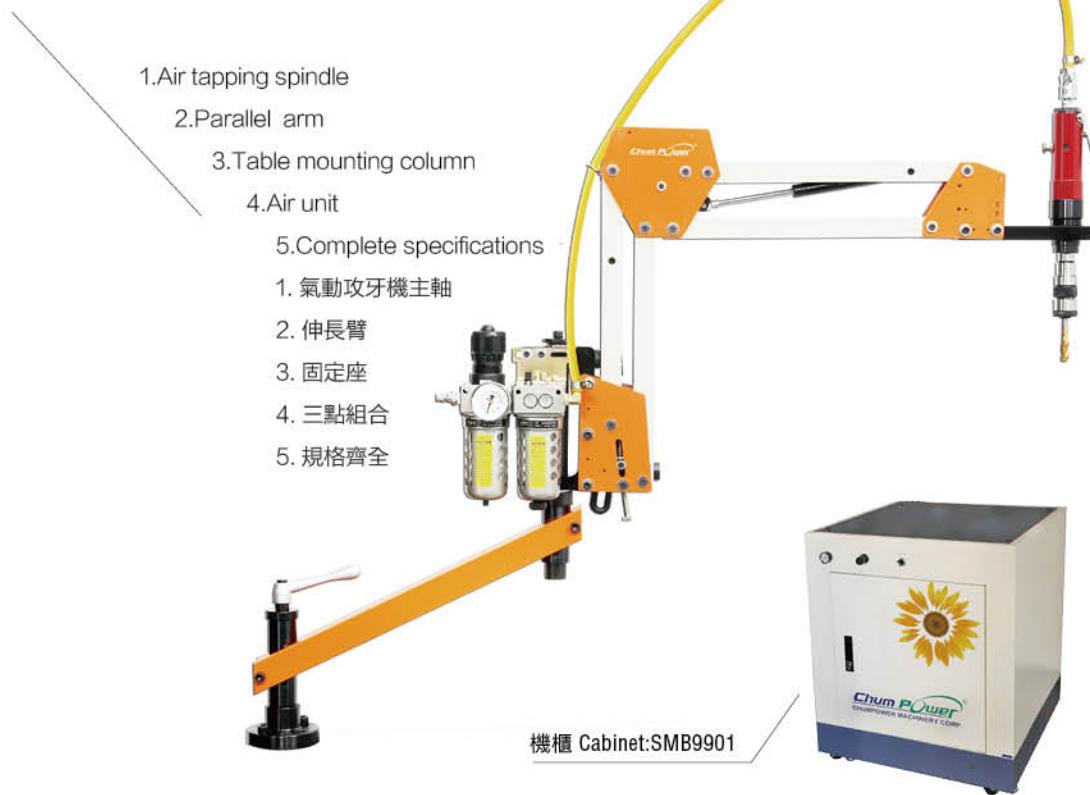
此產品適用於 CNC 中心加工機，高速車床，直立式鑽床，銑床及其它可反轉的主軸。



Code No. 型號	Size 尺寸	Capacity 攻牙能力		TAPER Mount No. DIN or Jacobs 錐孔組接型號	L (mm)	L1 (mm)	ΦD (mm)	ΦD1 (mm)	Weight(g) 重量
		mm	inch						
BA35021M30101A	1/2"	M3-M12	1/8"~1/2"	MT2	129	49	43	42.5	
BA35021M40101A	1/2"	M3-M12	1/8"~1/2"	MT3	148	49	43	42.5	
BA35085M30101A	5/8"	M3-M16	1/8"~5/8"	MT2	136	60	48.5	46	732
BA35085M40101A	5/8"	M3-M16	1/8"~5/8"	MT3		60	48.5	46	
BA35043M30101A	3/4"	M9-M18	3/8"~3/4"	MT2	143.5	58	51	49	924
BA35043M40101A	3/4"	M9-M18	3/8"~3/4"	MT3	162.5	58	51	49	1074
BA35043M50101A	3/4"	M9-M18	3/8"~3/4"	MT4	187.5	58	51	49	1380

\*Custom-Built products are available on request. \*特製品可依客戶需求訂製

## Air tapping Machine 氣動攻牙機



Code No. 型號	Size 規格	Capacity 攻牙能力	Spindle R.P.M 主軸轉速	Work Place 工作範圍
BTSMB010000A	SW-0708	M8	700 R.P.M	Rmax 700mm
BTSMB020000A	SW-0712	M12	400 R.P.M	
BTSMB030000A	SW-0716	M16	250 R.P.M	
BTSMB040000A	SW-0720	M20	200R.P.M	
BTSMB050000A	SW-0722	M22	200 R.P.M	
BTSMB060000A	SW-0724	M24	100 R.P.M	
BTSMB070000A	SW-1408	M8	700 R.P.M	Rmax 1400mm
BTSMB080000A	SW-1412	M12	400 R.P.M	
BTSMB090000A	SW-1416	M16	250 R.P.M	
BTSMB100000A	SW-1420	M20	200R.P.M	
BTSMB110000A	SW-1422	M22	200 R.P.M	
BTSMB120000A	SW-1424	M24	100 R.P.M	
BTSMB130000A	SW-1608	M8	700 R.P.M	Rmax 1600mm
BTSMB140000A	SW-1612	M12	400 R.P.M	
BTSMB150000A	SW-1616	M16	250 R.P.M	
BTSMB160000A	SW-1620	M20	200R.P.M	
BTSMB170000A	SW-1622	M22	200 R.P.M	
BTSMB180000A	SW-1624	M24	100 R.P.M	
BTSMB190000A	SW-1908	M8	700 R.P.M	Rmax 1900mm
BTSMB200000A	SW-1912	M12	400 R.P.M	
BTSMB210000A	SW-1916	M16	250 R.P.M	
BTSMB220000A	SW-1920	M20	200R.P.M	
BTSMB230000A	SW-1922	M22	200 R.P.M	
BTSMB240000A	SW-1924	M24	100 R.P.M	

\* Custom-Built products are available on request. \* 特製品可依客戶需求訂製