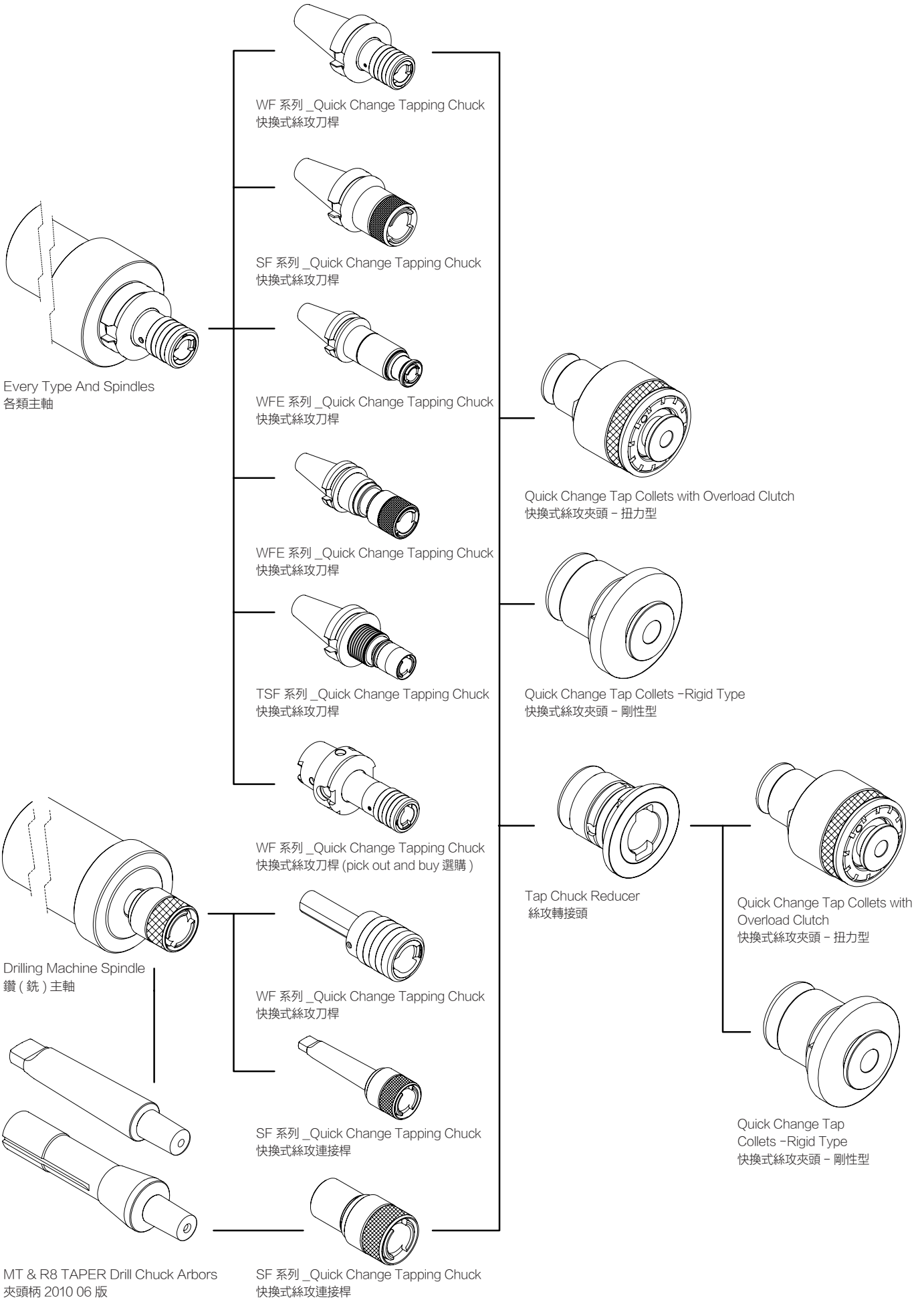


# Tap Chuck

絲攻夾頭系列

C







## Quick Change Tapping Chuck 快換式絲攻刀桿

With Length Compensation / Extra length 伸縮緩衝加長型

■ Feature / 特點

- Quick Change of Tap Adapters.
- Length Compensation could prevent tap from breaking upon tapping.
- 快換式絲攻連接桿
- 緩衝可預防絲攻在攻牙時斷落

fig1.

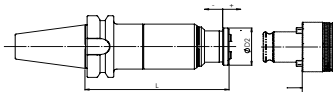
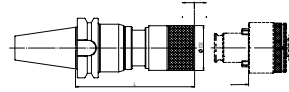


fig2.



Code No. 型號	SPEC. 規格	Capacity 攻牙能力	L	ΦD2	Length Compression 壓縮長度		Collets 筒夾	fig.
					Compression 壓縮 -	Tension 張力 +		
BA2BT40331001A	BT40-WFE12-135	M3-M14	135	38	10	20	TC312/B	1
BA2BT40331002A	BT40-WFE12-165	M3-M14	165	38				
BA2BT50331001A	BT50-WFE12-135	M3-M14	135	38				
BA2BT50331003A	BT50-WFE12-165	M3-M14	165	38				
BA2BT50331002A	BT50-WFE12-195	M3-M14	195	38	10	20	TC820/B	1
BA2BT50332001A	BT50-WFE20-135	M8-M24	135	58				
BA2BT50332002A	BT40-WFE12-135L	M8-M24	165	58				
BA2BT50332003A	BT40-WFE12-165L	M8-M24	195	58				
BA2BT50333001A	BT50-WFE 33-200	M14~M36	200	76	15	20	TC1433/B	2

\*Custom-Built products are available on request. \*特製品可依客戶需求訂製 \*Tap collets to be ordered separately. \*絲攻夾頭需另購

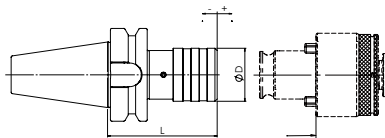


## Quick Change Tapping Chuck 快換式絲攻刀桿

With Length Compensation 伸縮緩衝型

■ Feature / 特點

- Quick Change of Tap Adapters.
- Length Compensation could prevent tap from breaking upon tapping.
- 快換式絲攻連接桿
- 緩衝可預防絲攻在攻牙時斷落



Code No. 型號	SPEC. 規格	Capacity 攻牙能力	L	ΦD2	Length Compression 壓縮長度		Collets 筒夾
					Compression 壓縮 -	Tension 張力 +	
BA2BT30321001A	BT30-WF12	M3-M14	70	36	6	7	TC312/B
BA2BT40321001A	BT40-WF12	M3-M14	75	36			
BA2BT50321001A	BT50-WF12	M3-M14	85	36			
BA2BT30322001A	BT30-WF20	M8-M24	105	53	12.5	12.5	TC820/B
BA2BT40322001A	BT40-WF20	M8-M24	95	53			
BA2BT50322001A	BT50-WF20	M8-M24	105	53			
BA2BT40323001A	BT40-WF33	M14~M36	160	78	19	19	TC1433/B
BA2BT50323001A	BT50-WF33	M14~M36	145	78			

\*Custom-Built products are available on request. \*特製品可依客戶需求訂製 \*Tap collets to be ordered separately. \*絲攻夾頭需另購

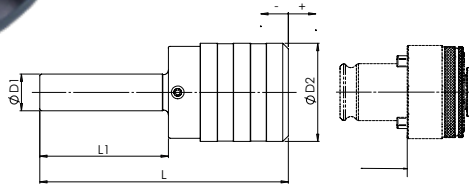
## Quick Change Tapping Chuck 快換式絲攻刀桿

With Length Compensation 伸縮緩衝型 / Straight Shank-Collets 直柄型-筒夾專用



### Feature / 特點

- Quick Change of Tap Adapters.
- Length Compensation could prevent tap from breaking upon tapping.
- 快換式絲攻連接桿
- 緩衝可預防絲攻在攻牙時斷落



Code No. 型號	SPEC. 規格	Capacity 攻牙能力	L	L1	ØD1	ØD2	Length Compression 壓縮長度		適用筒夾 Collets
							Compression 壓縮 -	Tension 張力 +	
BA362DD20W001A	D20-WF12	M3-M14	113	70	20	36	6	7	TC312/B
BA362DD32W001A	D32-WF12	M3-M14	113	70	32	36	6	7	TC312/B
BA361DD20W001A	D20-WF20	M8-M24	135	70	20	53	12.5	12.5	TC820/B
BA361DD32W001A	D32-WF20	M8-M24	135	70	32	53	12.5	12.5	TC820/B
BA363DD32W001A	D32-WF33	M14-M36	183	80	32	78	19	19	TC1433/B

\*Custom-Built products are available on request. \*特製品可依客戶需求訂製 \*Tap collets to be ordered separately. \*絲攻夾頭需另購

## Quick Change Tapping Chuck 快換式絲攻刀桿

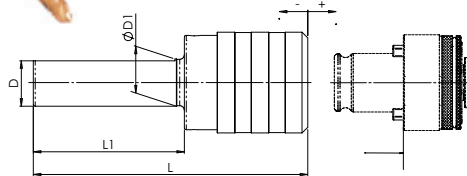
With Length Compensation 伸縮緩衝型

Straight Shank-Side-Lock & CNC Lathe 直柄型-側固及CNC車床專用



### Feature / 特點

- Quick Change of Tap Adapters.
- Length Compensation could prevent tap from breaking upon tapping.
- 快換式絲攻連接桿
- 緩衝可預防絲攻在攻牙時斷落



Code No. 型號	SPEC. 規格	Capacity 攻牙能力	L	L1	D	ØD1	ØD2	Length Compression 壓縮長度		Collets 適用筒夾
								Compression 壓縮 -	Tension 張力 +	
BA362DA20W001A	D20A-WF12	M3-M14	113	70	19	20	36	6	7	TC312/B
BA362DA32W001A	D32A-WF12	M3-M14	113	70	31	32	36	6	7	TC312/B
BA361DA20W001A	D20A-WF20	M8-M24	135	70	19	20	53	12.5	12.5	TC820/B
BA361DA32W001A	D32A-WF20	M8-M24	135	70	31	32	53	12.5	12.5	TC820/B
BA363DA32W001A	D32A-WF33	M14-M36	183	80	31	32	78	19	19	TC1433/B

\*Custom-Built products are available on request. \*特製品可依客戶需求訂製 \*Tap collets to be ordered separately. \*絲攻夾頭需另購

## Quick Change Tapping Chuck 快換式絲攻刀桿

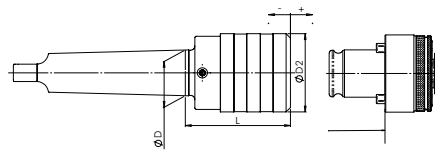
With Length Compensation 伸縮緩衝型 / Morse Taper Shank 莫氏錐度型



■ Application / 用途：

The products are suitable for Radial Drilling Machines, CNC Turning Centers, High-Speed Center Lathes, Drilling Machines, Radial Drilling Machines, Air Tapping Machines, Milling Machines and other machines with reversible spindles.

此產品適用於旋臂式鑽床，高速車床，直立式鑽床，銑床及其它可反轉的主軸。



Code No. 型號	SPEC. 規格	Capacity 攻牙能力	ØD	L	ΦD2	Length Compression 壓縮長度		Collets 適用筒夾
						Compression 壓縮 -	Tension 張力 +	
BA362MT02W001A	MT2-WF12	M3-M14	17.78	48	36	6	7	TC312/B
BA362MT03W001A	MT3-WF12	M3-M14	23.825	48	36			
BA362MT04W001A	MT4-WF12	M3-M14	31.267	49	36			
BA361MT02W001A	MT2-WF20	M8-M24	17.78	70	53	12.5	12.5	TC820/B
BA361MT03W001A	MT3-WF20	M8-M24	23.825	70	53			
BA361MT04W001A	MT4-WF20	M8-M24	31.267	72	53			
BA363MT04W001A	MT4-WF33	M14-M36	31.267	110	78	19	19	TC1433/B

\*Custom-Built products are available on request. \*特製品可依客戶需求訂製 \*Tap collets to be ordered separately. \*絲攻夾頭需另購

## Quick Change Tapping Chuck Adapter 快換式連接桿



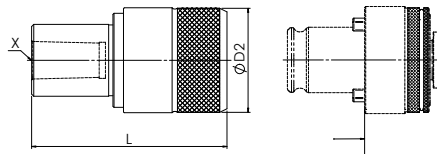
■ Application / 用途：

The products are suitable for Vertical Tapping Machines, Radial Drilling Machines, Vertical Drilling Machines, Milling Machines and other machines with reversible spindles and Power Tools and Air Tools.

此產品通用於直立式攻牙機，旋臂式鑽床，直立式鑽床，銑床及其它可反轉的主軸及電鑽工具，氣動工具。

■ Feature / 特點

- Specially designed for tapping machine
- Can connect to tap collet.
- Can easily quick change to the tap.
- 攻牙機台專用
- 可連接絲攻筒夾
- 可快速轉換絲攻



Code No. 型號	SPEC. 規格	Capacity 攻牙能力	L	ΦD2	X	Collets 適用筒夾
BA362JT06S001A	JT6-SF12	M3-M14	66	32	JT6	TC312/B
BA362BB16S001A	B16-SF12	M3-M14	66	32	B16	
BA362JT2SS001A	JT2S-SF12	M3-M14	61	32	JT2S	
BA362BB12S001A	B12-SF12	M3-M14	61	32	B12	TC820/B
BA361JT06S001A	JT6-SF20	M8-M24	86	50	JT6	
BA361BB18S001A	B18-SF20	M8-M24	92.5	50	B18	
BA361BB16S001A	B16-SF20	M8-M24	86	50	B16	TC820/B
BA363BB18S001A	B18-SF33	M14-M36	138	76	B18	TC1433/B

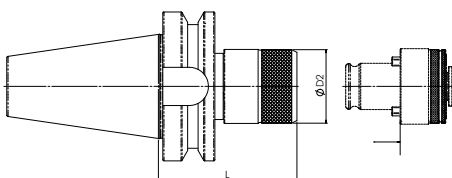
\*Custom-Built products are available on request. \*特製品可依客戶需求訂製 \*Tap collets to be ordered separately. \*絲攻夾頭需另購

## Quick Change Tapping Chuck 快換式絲攻刀桿



■ Feature / 特點

- Quick Change of Tap Adapters.
- Special designed for tapping.
- 快換式絲攻連接桿
- 絲攻專用



Code No. 型號	SPEC. 規格	Capacity 攻牙能力	L	$\phi D2$	Collets 適用筒夾
BA2BT40311001A	BT40-SF12	M3-M14	60	32	TC312/B
BA2BT50311001A	BT50-SF12	M3-M14	75	32	TC312/B
BA2BT40312001A	BT40-SF20	M8-M24	82	50	TC820/B
BA2BT50312001A	BT50-SF20	M8-M24	93	50	TC820/B
BA2BT40313001A	BT40-SF33	M14-M36	115	76	TC1433/B
BA2BT50313001A	BT50-SF33	M14-M36	126	76	TC1433/B

\*Custom-Built products are available on request. \*特製品可依客戶需求訂製 \*Tap collets to be ordered separately. \*絲攻夾頭需另購

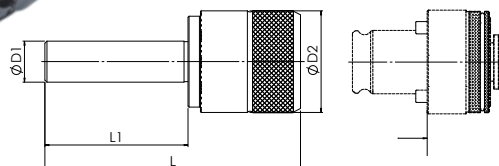
## Quick Change Tapping Chuck 快換式絲攻刀桿

### Straight Shank-Collets 直柄型-筒夾專用



■ Feature / 特點

- Quick Change of Tap Adapters.
- Special designed for tapping.
- 快換式絲攻連接桿
- 絲攻專用



Code No. 型號	SPEC. 規格	Capacity 攻牙能力	L	L1	$\phi D1$	$\phi D2$	Collets 適用筒夾
BA362DD20S001A	D20-SF12	M3-M14	104	70	20		
BA362DD32S001A	D32-SF12	M3-M14	106	70	32	32	TC312/B
BA361DD20S001A	D20-SF20	M8-M24	124	70	20		
BA361DD32S001A	D32-SF20	M8-M24	124	70	32	50	TC820/B
BA363DD25S001A	D25-SF33	M14-M36	169	70	25		
BA363DD30S001A	D30-SF33	M14-M36	169	60	30	76	TC1433/B
BA363DD32S001A	D32-SF33	M14-M36	169	70	32		

\*Custom-Built products are available on request. \*特製品可依客戶需求訂製 \*Tap collets to be ordered separately. \*絲攻夾頭需另購

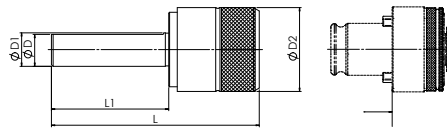
## Quick Change Tapping Chuck 快換式絲攻刀桿

### Straight Shank-Side-Lock & CNC Lathe 直柄型-側固及CNC車床專用



■ Feature / 特點

- Quick Change of Tap Adapters.
- Special designed for tapping.
- 快換式絲攻連接桿
- 絲攻專用



Code No. 型號	SPEC. 規格	Capacity 攻牙能力	L	L1	D	ΦD1	ΦD2	Collets 適用筒夾
BA362DA20S001A	D20A-SF12	M 3-M14	104	70	19	20	32	TC312/B
BA362DA32S001A	D32A-SF12	M 3-M14	106	70	31	32	32	TC312/B
BA361DA20S001A	D20A-SF20	M 8-M24	124	70	19	20	50	TC820/B
BA361DA32S001A	D32A-SF20	M 8-M24	124	70	31	32	50	TC820/B
BA363DA25S001A	D25A-SF33	M14-M36	169	70	24	25	76	TC1433/B
BA363DA32S001A	D32A-SF33	M14-M36	169	70	31	32	76	TC1433/B

\*Custom-Built products are available on request. \*特製品可依客戶需求訂製 \*Tap collets to be ordered separately. \*絲攻夾頭需另購

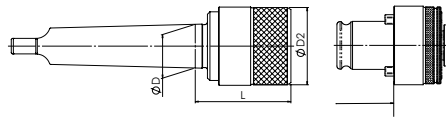
## Quick Change Tapping Chuck 快換式絲攻刀桿

### Morse Taper Shank 莫氏錐度型



■ Feature / 特點

- Quick Change of Tap Adapters.
- Special designed for tapping.
- 快換式絲攻連接桿
- 絲攻專用



Code No. 型號	SPEC. 規格	Capacity 攻牙能力	L	ØD	ΦD2	Collets 適用筒夾
BA364MT01S001A	MT1-SF08	M3-M8	35	12.065	23	TC308/B
BA362MT02S001A	MT2-SF12	M 3-M14	39	17.78	32	TC312/B
BA362MT03S001A	MT3-SF12	M 3-M14	39	23.825	32	
BA362MT04S001A	MT4-SF12	M 3-M14	40.5	31.267	32	
BA361MT02S001A	MT2-SF20	M 8-M24	59	17.78	50	
BA361MT03S001A	MT3-SF20	M 8-M24	59	23.825	50	TC820/B
BA361MT04S001A	MT4-SF20	M 8-M24	60.5	31.267	50	
BA363MT03S001A	MT3-SF33	M14-M36	104	23.825	76	TC1433/B
BA363MT04S001A	MT4-SF33	M14-M36	105	31.267	76	

\*Custom-Built products are available on request. \*特製品可依客戶需求訂製 \*Tap collets to be ordered separately. \*絲攻夾頭需另購

## CP Synchronized Tapping Holder 剛性同步絲攻刀桿 -ER 型



■ Feature / 特點

- Using special Tapping collet to stable the tools.
- Special designed for tapping.
- 使用專用絲攻筒夾，穩固刀具。

fig1.

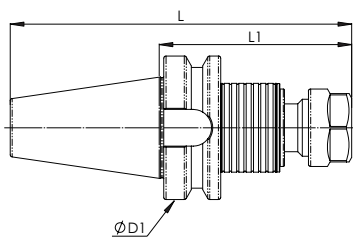
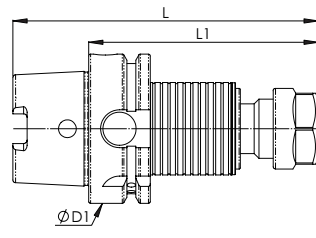


fig2.



Code NO. 型號	SPEC. 規格	Capacity 攻牙能力	Tapping 絲攻筒夾 Ø 柄徑 / 口方孔	L	L1	ØD1	fig.
BA2BT40STH001A	STH/BT40xTER20	M3-M14	Ø4.0~10.0/ □ 3.0~8.0	150L	85L	63	1
BA2HK6ASTH001A	STH/HSK63AxTER20	M3-M14		129L	97L	63	2

\*Custom-Built products are available on request. \*特製品可依客戶需求訂製 \*Tap collets to be ordered separately. \*絲攻夾頭需另購

## CP Synchronized Tapping Holder Quick Change Type 剛性同步絲攻刀桿 - 快換型



■ Feature / 特點

- To match with quick change structure, Easy to quick change the rigid type of tap chuck.
- 搭配快換結構，可快速替換剛性夾頭。

fig1.

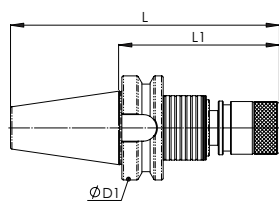
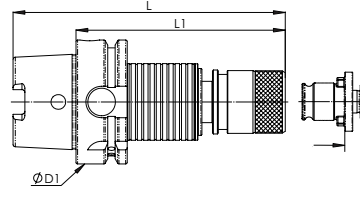


fig2.



Code NO. 型號	SPEC. 規格	Capacity 攻牙能力	L	L1	ØD1	Collets 適用筒夾	fig.
BA2BT40STH002A	STH/BT40-TSF12	M3-M14	163L	97L	63	TC312B	1
BA2HK6ASTH002A	STH/HSK63A-TSF12	M3-M14	138L	106L	63	TC312B	2

\*Custom-Built products are available on request. \*特製品可依客戶需求訂製 \*Tap collets to be ordered separately. \*絲攻夾頭需另購



## Quick Change Tap Collets with Overload Clutch

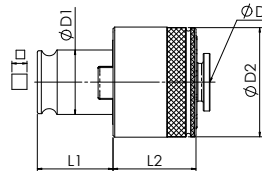
### 快換式絲攻夾頭 - 扭力型

JIS Type



■ Feature / 特點

- overload clutch is designed to prevent tap from breaking upon tapping
- 扭力型絲攻設計，可預防絲攻在攻牙時斷落。



Code No. 型號	TC 312 JIS Tap		Tap Shank 絲攻尺寸		Capacity 攻牙能力	L1 (mm)	L2 (mm)	$\phi D1$ (mm)	$\phi D2$ (mm)
			$\phi D$ 柄徑	□四方孔					
BA35AJS080101A	M8		6.2	5.0	M3~M8	19.5	{8}	13.0	23.0
BA35AJS100101A	M10	UNC3/8	7.0	5.5					

Code No. 型號	TC 312 JIS Tap		Tap Shank 絲攻尺寸		Capacity 攻牙能力	L1 (mm)	L2 (mm)	$\phi D1$ (mm)	$\phi D2$ (mm)
			$\phi D$ 柄徑	□四方孔					
BA354JS030101A	M3	#5~6	4.0	3.2	M3~M14	22	25	19	32
BA354JS040101A	M4~4.5	#8	5.0	4.0					
BA352JS050101A	M5~5.5	#10	5.5	4.5					
BA352JS060101A	M6	UNC1/4	6.0	4.5					
BA352JS080102A	M8~7		6.2	5.0					
BA352JS090101A	M10~9	UNC3/8	7.0	5.5					
BA352JS110101A	M11	UNC7/16	8.0	6.0					
BA352JS120101A	M12		8.5	6.5					
BA352JS130101A		UNC1/2	9.0	7.0					
BA352JS140101A	M14~15	UNC9/16	10.5	8.0					

Code No. 型號	TC 820 JIS Tap		Tap Shank 絲攻尺寸		Capacity 攻牙能力	L1 (mm)	L2 (mm)	$\phi D1$ (mm)	$\phi D2$ (mm)
			$\phi D$ 柄徑	□四方孔					
BA351JS050101A	M5~5.5	#10	5.5	4.5	M8~M24	36	30.5	31	50
BA351JS060101A	M6	UNC1/4	6.0	4.5					
BA351JS080101A	M8~7		6.2	5.0					
BA351JS100101A	M10~9	UNC3/8	7.0	5.5					
BA351JS100101A	M11	UNC7/16	8.0	6.0					
BA351JS120101A	M12		8.5	6.5					
BA351JS130101A		UNC1/2	9.0	7.0					
BA351JS140101A	M14~15	UNC9/16	10.5	8.0					
BA351JS160101A		UNC5/8	12.0	9.0					
BA351JS160102A	M16		12.5	10.0					
BA351JS180101A	M18	UNC3/4	14.0	11.0					
BA351JS200101A	M20		15.0	12.0					
BA351JS220101A	M22	UNC7/8	17.0	13.0					
BA351JS240101A	M24~M25		19.0	15.0					

Code No. 型號	TC 1433 JIS Tap		Tap Shank 絲攻尺寸		Capacity 攻牙能力	L1 (mm)	L2 (mm)	$\phi D1$ (mm)	$\phi D2$ (mm)
			$\phi D$ 柄徑	□四方孔					
BA353JS140101A	M14~15	UNC9/16	10.5	8.0	M14~M36	56	41	48	72
BA353JS160102A		UNC5/8	12.0	9.0					
BA353JS160101A	M16		12.5	10.0					
BA353JS180101A	M18	UNC3/4	14.0	11.0					
BA353JS200101A	M20		15.0	12.0					
BA353JS220101A	M22	UNC7/8	17.0	13.0					
BA353JS240101A	M24~25		19.0	15.0					
BA353JS270101A	M27~26	UNC1	20.0	15.0					
BA353JS280101A	M28		21.0	17.0					
BA353JS290101A		UNC1 1/8	22.0	17.0					
BA353JS300101A	M30		23.0	17.0					
BA353JS320101A	M32	UNC1 1/4	24.0	19.0					
BA353JS320101A	M33		25.0	19.0					
BA353JS350101A	M35~34	UNC1 3/8	26.0	21.0					
BA353JS360101A	M36		28.0	21.0					

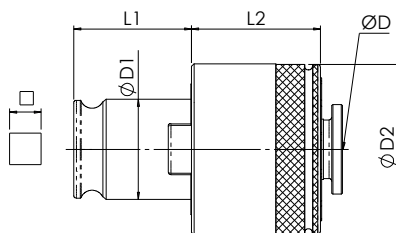
\* Custom-Built products are available on request. \* 特製品可依客戶需求訂製

## Quick Change Tap Collets with Overload Clutch 快換式絲攻夾頭 - 扭力型 DIN 371 Type



### Feature / 特性

- Overload Clutch is designed to prevent tap from breaking upon tapping
- 扭力型絲攻設計，可預防絲攻在攻牙時斷落



Code No. 型號	TC312 DIN371 Tap	Tap Shank 絲攻尺寸		攻牙能力 Capacity	L1(mm)	L2(mm)	ØD1(mm)	ØD2(mm)
		ΦD 柄徑	□四方孔					
BA352D1030101A	M3	3.5	2.7	M3-M14	22	25	19	32
BA352D1040101A	M3.5	4.0	3.0					
BA352D1040102A	M4	4.5	3.4					
BA352D1050101A	M4.5	6.0	4.9					
BA352D1050102A	M5	6.0	4.9					
BA352D1060101A	M6	6.0	4.9					
BA352D1080101A	M8	8.0	6.2					
BA352D1100101A	M10	10.0	8.0					

Code No. 型號	TC820 DIN371 Tap	Tap Shank 絲攻尺寸		Capacity 攻牙能力	L1 (mm)	L2 (mm)	ΦD1 (mm)	ΦD2 (mm)
		ΦD 柄徑	□四方孔					
BA351D1040101A	M4	4.5	3.4	M8-M24	36	30.5	31	50
BA351D1050101A	M5	6.0	4.9					
BA351D1060101A	M6	6.0	4.9					
BA351D1080101A	M8	8.0	6.2					
BA351D1100101A	M10	10.0	8.0					

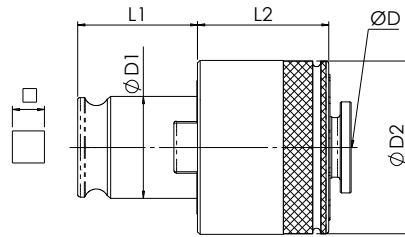
\* Custom-Built products are available on request. \* 特製品可依客戶需求訂製

## Quick Change Tap Collets with Overload Clutch 快換式絲攻夾頭 - 扭力型 DIN 376 Type



■ Feature / 特性

- Overload Clutch is designed to prevent tap from breaking upon tapping  
· 扭力型絲攻設計，可預防絲攻在攻牙時斷落



Code No. 型號	TC 312 DIN 376 Tap	Tap Shank 絲攻尺寸		Capacity 攻牙能力	L1 (mm)	L2 (mm)	ØD1 (mm)	ØD2 (mm)
		ΦD 柄徑	□四方孔					
BA352D6050101A	M4.5	3.5	2.7	M3-M14	22	25	19	32
BA352D6050102A	M5	3.5	2.7					
BA352D6060101A	M6	4.5	3.4					
BA352D6070101A	M7	5.5	4.3					
BA352D6080101A	M8	6.0	4.9					
BA352D6100101A	M10	7.0	5.5					
BA352D6120101A	M12	9.0	7.0					
BA352D6140101A	M14	11.0	9.0					

Code No. 型號	TC 820 DIN 376 Tap	Tap Shank 絲攻尺寸		Capacity 攻牙能力	L1 (mm)	L2 (mm)	ØD1 (mm)	ØD2 (mm)
		ΦD 柄徑	□四方孔					
BA352D6080101A	M8	6.0	4.9	M8-M24	36	30.5	31	50
BA352D6100101A	M10	7.0	5.5					
BA352D6120101A	M12	9.0	7.0					
BA352D6140101A	M14	11.0	9.0					
BA352D6160101A	M16	12.0	9.0					
BA352D6180101A	M18	14.0	11.0					
BA352D6200101A	M20	16.0	12.0					
BA352D6220101A	M22	18.0	14.5					
BA352D6240101A	M24	18.0	14.5					

Code No. 型號	TC 1433 DIN 376 Tap	Tap Shank 絲攻尺寸		Capacity 攻牙能力	L1 (mm)	L2 (mm)	ØD1 (mm)	ØD2 (mm)
		ΦD 柄徑	□四方孔					
BA353D6140101A	M14	11.0	9.0	M14-M36	56	41	48	72
BA353D6160101A	M16	12.0	9.0					
BA353D6180101A	M18	14.0	11.0					
BA353D6200101A	M20	16.0	12.0					
BA353D6200101A	M22	18.0	14.5					
BA353D6200101A	M24	18.0	14.5					
BA353D6200101A	M27	20.0	16.0					
BA353D6300101A	M30	22.0	18.0					
BA353D6330101A	M33	25.0	20.0					
BA353D6360101A	M36	28.0	22.0					

\* Custom-Built products are available on request. \* 特製品可依客戶需求訂製

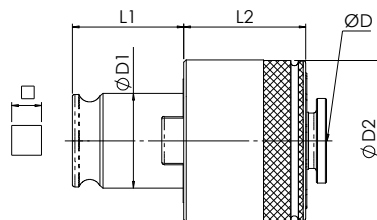
## Quick Change Tap Collets with Overload Clutch 快換式絲攻夾頭 - 扭力型

ISO 529 Type



■ Feature / 特性

- Overload Clutch is designed to prevent tap from breaking upon tapping
- 扭力型絲攻設計，可預防絲攻在攻牙時斷落



Code No. 型號	TC 312 ISO 529 Tap	Tap Shank 絲攻尺寸		Capacity 攻牙能力	L1 (mm)	L2 (mm)	ØD1 (mm)	ØD2 (mm)
		ΦD 柄徑	□四方孔					
BA352S5030101A	M3	3.15	2.5	M3-M14	22	25	19	32
BA352S5040101A	M3.5	3.55	2.8					
BA352S5040102A	M4	4.0	3.15					
BA352S5050101A	M4.5	4.5	3.55					
BA352S5050102A	M5	5.0	4.0					
BA352S5060101A	M6	6.3	5.0					
BA352S5070101A	M7	7.1	5.6					
BA352S5080101A	M8	8.0	6.3					
BA352S5090101A	M9	9.0	7.1					
BA352S5100101A	M10	10.0	8.0					
BA352S5090101A	M9	9.0	7.1					
BA352S5100101A	M10	10.0	8.0					

Code No. 型號	TC 820 ISO 529 Tap	Tap Shank 絲攻尺寸		Capacity 攻牙能力	L1 (mm)	L2 (mm)	ØD1 (mm)	ØD2 (mm)
		ΦD 柄徑	□四方孔					
BA351S5060101A	M6	6.3	5.0	M8-M24	36	30.5	31	50
BA351S5070101A	M7	7.1	5.6					
BA351S5080101A	M8	8.0	6.3					
BA351S5090101A	M9	9.0	7.1					
BA351S5100101A	M10	10.0	8.0					

\* Custom-Built products are available on request. \* 特製品可依客戶需求訂製

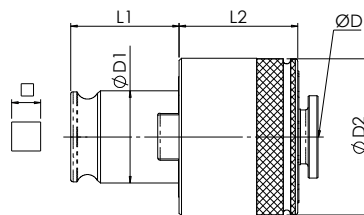
## Quick Change Tap Collets with Overload Clutch 快換式絲攻夾頭 - 扭力型

ISO 529/ 2283 Type



■ Feature / 特性

- Overload Clutch is designed to prevent tap from breaking upon tapping
- 扭力型絲攻設計，可預防絲攻在攻牙時斷落



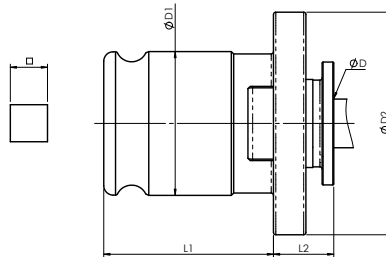
Code No. 型號	TC312 ISO 529/ 2283 Tap	Tap Shank 絲攻尺寸		Capacity 攻牙能力	L1 (mm)	L2 (mm)	ØD1 (mm)	ØD2 (mm)
		ΦD 柄徑	□四方孔					
BA352S2040102A	M4	3.15	2.5	M3-M14	22	25	19	32
BA352S2050102A	M4.5	3.55	2.8					
BA352S2050101A	M5	4.0	3.15					
BA352S2060101A	M6	4.5	3.55					
BA352S2070101A	M7	5.6	4.5					
BA352S2080101A	M8	6.3	5.0					
BA352S2090101A	M9	7.1	5.6					
BA352S2100101A	M10	8.0	6.3					
BA352S2120101A	M12	9.0	7.1					
BA352S2140101A	M14	11.2	9.0					

Code No. 型號	TC820 ISO 529/ 2283 Tap	Tap Shank 絲攻尺寸		Capacity 攻牙能力	L1 (mm)	L2 (mm)	ØD1 (mm)	ØD2 (mm)
		ΦD 柄徑	□四方孔					
BA351S2080101A	M8	6.3	5.0	M8-M24	36	30.5	31	50
BA351S2090101A	M9	7.1	5.6					
BA351S2100101A	M10	8.0	6.3					
BA351S2120101A	M12	9.0	7.1					
BA351S2140101A	M14	11.2	9.0					
BA351S2160101A	M16	12.5	10.0					
BA351S2180101A	M18	14.0	11.2					
BA351S2200101A	M20	14.0	11.2					
BA351S2220101A	M22	16.0	12.5					
BA351S2240101A	M24	18.0	14.0					

Code No. 型號	TC 1433 ISO 529/ 2283 Tap	Tap Shank 絲攻尺寸		Capacity 攻牙能力	L1 (mm)	L2 (mm)	ØD1 (mm)	ØD2 (mm)
		ΦD 柄徑	□四方孔					
BA353S2140101A	M14	11.2	9.0	M14-M36	56	41	48	72
BA353S2160101A	M16	12.5	10.0					
BA353S2180101A	M18	14.0	11.2					
BA353S2200101A	M20	14.0	11.2					
BA353S2220101A	M22	16.0	12.5					
BA353S2240101A	M24	18.0	14.0					
BA353S2270100A	M27	20.0	16.0					
BA353S2300101A	M30	20.0	16.0					
BA353S2330101A	M33	22.4	18.0					
BA353S2360101A	M36	25.0	20.0					

\* Custom-Built products are available on request. \* 特製品可依客戶需求訂製

## Quick Change Tap Collets-Rigid Type 快換式絲攻夾頭 - 剛性 JIS Type

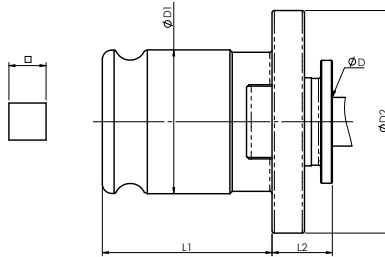


Code No. 型號	TC308B JIS Tap		Tap Shank 絲攻尺寸		Capacity 攻牙能力	L1 (mm)	L2 (mm)	ΦD1 (mm)	ΦD2 (mm)
			ΦD 柄徑	□四方孔					
BA358JS080101A	M8		6.2	5.0	M3-M8	19.5	[8]	13.0	22.0
BA358JS100101A	M10	UNC3/8	7.0	5.5					

Code No. 型號	TC312B JIS Tap		Tap Shank 絲攻尺寸		Capacity 攻牙能力	L1 (mm)	L2 (mm)	ΦD1 (mm)	ΦD2 (mm)
			ΦD 柄徑	□四方孔					
BA354JS030101A	M3	#5~6	4.0	3.2	M3-M14	22	7	19	30
BA354JS040101A	M4~4.5	#8	5.0	4.0					
BA354JS050101A	M5~5.5	#10	5.5	4.5					
BA354JS060101A	M6	UNC1/4	6.0	4.5					
BA354JS080101A	M8~7		6.2	5.0					
BA354JS100101A	M10~9	UNC3/8	7.0	5.5					
BA354JS110101A	M11	UNC7/16	8.0	6.0					
BA354JS120101A	M12		8.5	6.5					
BA354JS130101A		UNC1/2	9.0	7.0					
BA354JS140101A	M14~15	UNC9/16	10.5	8.0					

Code No. 型號	TC820B JIS Tap		Tap Shank 絲攻尺寸		Capacity 攻牙能力	L1 (mm)	L2 (mm)	ΦD1 (mm)	ΦD2 (mm)
			ΦD 柄徑	□四方孔					
BA355JS080101A	M8~7		6.2	5.0	M8-24	36	11	31	48
BA355JS100101A	M10~9	UNC3/8	7.0	5.5					
BA355JS110001A	M11	UNC7/16	8.0	6.0					
BA355JS120001A	M12		8.5	6.5					
BA355JS130101A		UNC1/2	9.0	7.0					
BA355JS140101A	M14~15	UNC9/16	10.5	8.0					
BA355JS160101A		UNC5/8	12.0	9.0					
BA355JS160102A	M16		12.5	10.0					
BA355JS180101A	M18	UNC3/4	14.0	11.0					
BA355JS200101A	M20		15.0	12.0					
BA355JS220101A	M22	UNC7/8	17.0	13.0					
BA355JS240101A	M24~M25		19.0	15.0					

## Quick Change Tap Collets-Rigid Type 快換式絲攻夾頭 - 剛性 JIS Type



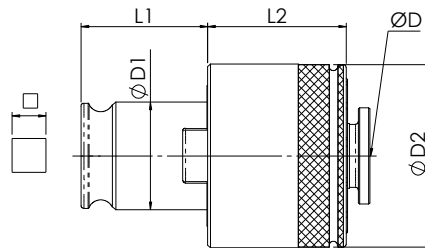
Code No. 型號	TC1433B JIS Tap		Tap Shank 絲攻尺寸		Capacity 攻牙能力	L1 (mm)	L2 (mm)	ΦD1 (mm)	ΦD2 (mm)
			ΦD 柄徑	□四方孔					
BA356JS140101A	M14~15	UNC9/16	10.5	8.0	M14~M36	56	14	48	69
BA356JS160102A		UNC5/8	12.0	9.0					
BA356JS160101A	M16		12.5	10.0					
BA356JS180101A	M18	UNC3/4	14.0	11.0					
BA356JS200101A	M20		15.0	12.0					
BA356JS220101A	M22	UNC7/8	17.0	13.0					
BA356JS240101A	M24~25		19.0	15.0					
BA356JS270101A	M27~26	UNC1	20.0	15.0					
BA356JS280101A	M28		21.0	17.0					
BA356JS290101A		UNC1 1/8	22.0	17.0					
BA356JS300101A	M30		23.0	17.0					
BA356JS320101A	M32	UNC1 1/4	24.0	19.0					
BA356JS320101A	M33		25.0	19.0					
BA356JS350101A	M35~34	UNC1 3/8	26.0	21.0					
BA356JS360101A	M36		28.0	21.0					

## Quick Change Tap Collets with Overload Clutch 快換式絲攻夾頭 - 扭力型 JIS Type



### Feature / 特性

- Overload Clutch is designed to prevent tap from breaking upon tapping
- 扭力型絲攻設計，可預防絲攻在攻牙時斷落



Code No. 型號	TC312 JIS Tap	Tap Shank 絲攻尺寸		Capacity 攻牙能力	L1 (mm)	L2 (mm)	ØD1 (mm)	ØD2 (mm)
		ΦD 柄徑	□四方孔					
BA352JS10P101A	PT 1/8	8.0	6.0	PT 1/8-PT 1/4	22	25	19	32
BA352JS14P101A	PT 1/4	11.0	9.0					

Code No. 型號	TC820 JIS Tap	Tap Shank 絲攻尺寸		Capacity 攻牙能力	L1 (mm)	L2 (mm)	ØD1 (mm)	ØD2 (mm)
		ΦD 柄徑	□四方孔					
BA351JS13P101A	PT 1/8	8.0	6.0	PT 1/8-PT 1/2	36	30.5	31	50
BA351JS14P101A	PT 1/4	11.0	9.0					
BA351JS18P101A	PT 3/8	14.0	11.0					
BA351JS220102A	PT 1/2	18.0	14.0					

Code No. 型號	TC1433 JIS Tap	Tap Shank 絲攻尺寸		Capacity 攻牙能力	L1 (mm)	L2 (mm)	ØD1 (mm)	ØD2 (mm)
		ΦD 柄徑	□四方孔					
BA353JS14P101A	PT 1/4	11.0	9.0	PT 1/4-PT 1"	56	41	48	72
BA353JS18P101A	PT 3/8	14.0	11.0					
BA353JS22P101A	PT 1/2	18.0	14.0					
BA353JS30P101A	PT 3/4	23.0	17.0					
BA353JS34P101A	PT 1	26.0	21.0					

\* Custom-Built products are available on request. \* 特製品可依客戶需求訂製

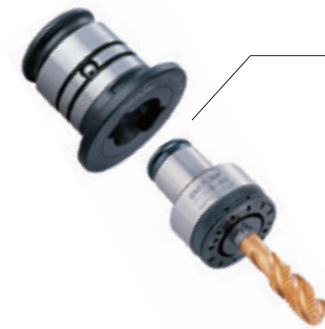


## Tap Chuck Reducer 絲攻轉接夾頭

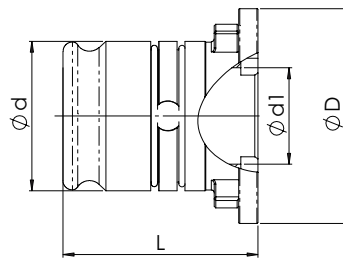
■ Feature / 特點

The Tap Chuck Adapter Is designed for transferring variety tapping machine system. It is easy to quick change for users and apply in different system tools.

絲攻轉接頭之設計目的是為了轉換各種不同系統的絲攻機台使用者可容易快換並節省工具成本



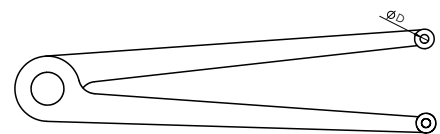
轉接示意圖



Code No. 型號	SPEC. 規格	L	ΦD	Φd	Ød1	Collets 適用筒夾	Weight(g) 重量
BA360TR010001A	TC312 → TC308	25.7	30	19	13	TC308/B	38.5
BA360TR020001A	TC820 → TC312	41.2	48	31	19	TC312/B	179
BA360TR030001A	TC1433 → TC820	62.6	69	48	31	TC820/B	588

\*Custom-Built products are available on request. \*特製品可依客戶需求訂製 \*Tap collets to be ordered separately. \*絲攻夾頭需另購

## Adjustable Pin Wrenches 調整板手



Code No. 型號	SPEC. 規格	ΦD	Collets 適用筒夾
BTSTA000101A	7-40	2.5	TC312 TC820
BTSTA000102A	11-60	4	TC1433

\*Custom-Built products are available on request. \*特製品可依客戶需求訂製

## Air tapping Machine 氣動攻牙機

1. Air tapping spindle
2. Parallel arm
3. Table mounting column
4. Air unit
5. Complete specifications
  1. 氣動攻牙機主軸
  2. 伸長臂
  3. 固定座
  4. 三點組合
  5. 規格齊全



機櫃 Cabinet:SMB9901

Code No. 型號	Size 規格	Capacity 攻牙能力	Spindle R.P.M 主軸轉速	Work Place 工作範圍
BTSMB010000A	SW-0708	M8	700 R.P.M	Rmax 700mm
BTSMB020000A	SW-0712	M12	400 R.P.M	
BTSMB030000A	SW-0716	M16	250 R.P.M	
BTSMB040000A	SW-0720	M20	200R.P.M	
BTSMB050000A	SW-0722	M22	200 R.P.M	
BTSMB060000A	SW-0724	M24	100 R.P.M	
BTSMB070000A	SW-1408	M8	700 R.P.M	Rmax 1400mm
BTSMB080000A	SW-1412	M12	400 R.P.M	
BTSMB090000A	SW-1416	M16	250 R.P.M	
BTSMB100000A	SW-1420	M20	200R.P.M	
BTSMB110000A	SW-1422	M22	200 R.P.M	
BTSMB120000A	SW-1424	M24	100 R.P.M	
BTSMB130000A	SW-1608	M8	700 R.P.M	Rmax 1600mm
BTSMB140000A	SW-1612	M12	400 R.P.M	
BTSMB150000A	SW-1616	M16	250 R.P.M	
BTSMB160000A	SW-1620	M20	200R.P.M	
BTSMB170000A	SW-1622	M22	200 R.P.M	
BTSMB180000A	SW-1624	M24	100 R.P.M	
BTSMB190000A	SW-1908	M8	700 R.P.M	Rmax 1900mm
BTSMB200000A	SW-1912	M12	400 R.P.M	
BTSMB210000A	SW-1916	M16	250 R.P.M	
BTSMB220000A	SW-1920	M20	200R.P.M	
BTSMB230000A	SW-1922	M22	200 R.P.M	
BTSMB240000A	SW-1924	M24	100 R.P.M	

\* Custom-Built products are available on request. \* 特製品可依客戶需求訂製

