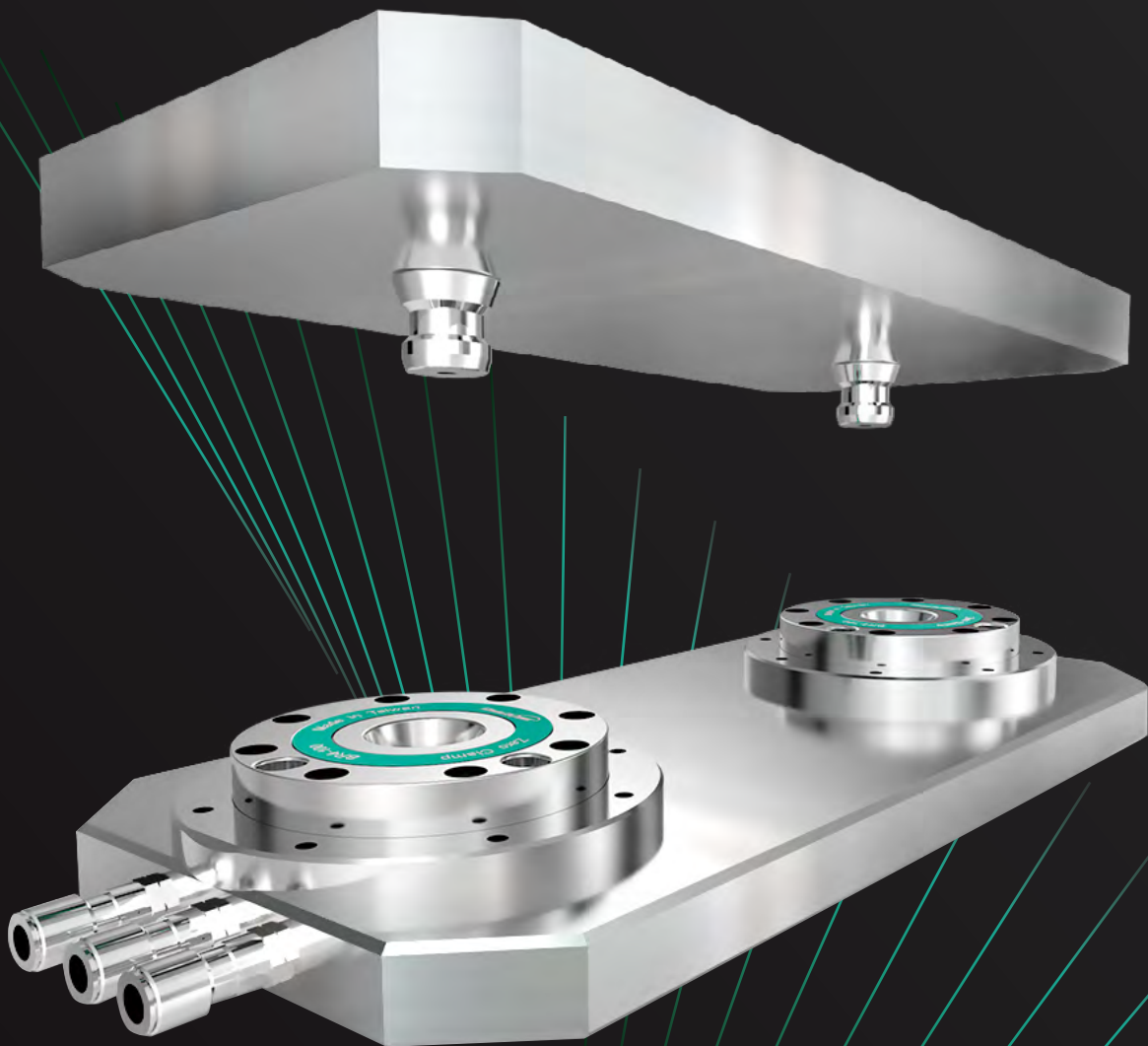


Zero Point 零點定位器 Clamping System



Zero Point Clamping System

銓寶零點定位器

CHUMPOWER Zero Point Clamping System can quickly change the clamp, effectively shorten the replacement time of production line, and greatly improve the production efficiency.

Its main part is made of stainless steel, the repeat positioning accuracy reach to 0.005mm; Also, the central hole with cleaning function can eliminates iron filings and impurities. It only needs 6kg / cm² air supply pressure to start the Zero Point Clamping System, could reduce the production costs easily.

銓寶零點定位器可快速更換夾治具，有效縮短更換產線時間，大幅提升生產效率。

主體零件由不銹鋼製成，重複定位精度達 0.005mm；具有中心孔吹氣功能排除鐵屑及雜質，使加工工件更加完美，並且只需 6kg/cm² 供氣壓力即可啟動零定位點夾持，輕鬆降低生產成本。

Application

產品適用

CNC Milling
Machine

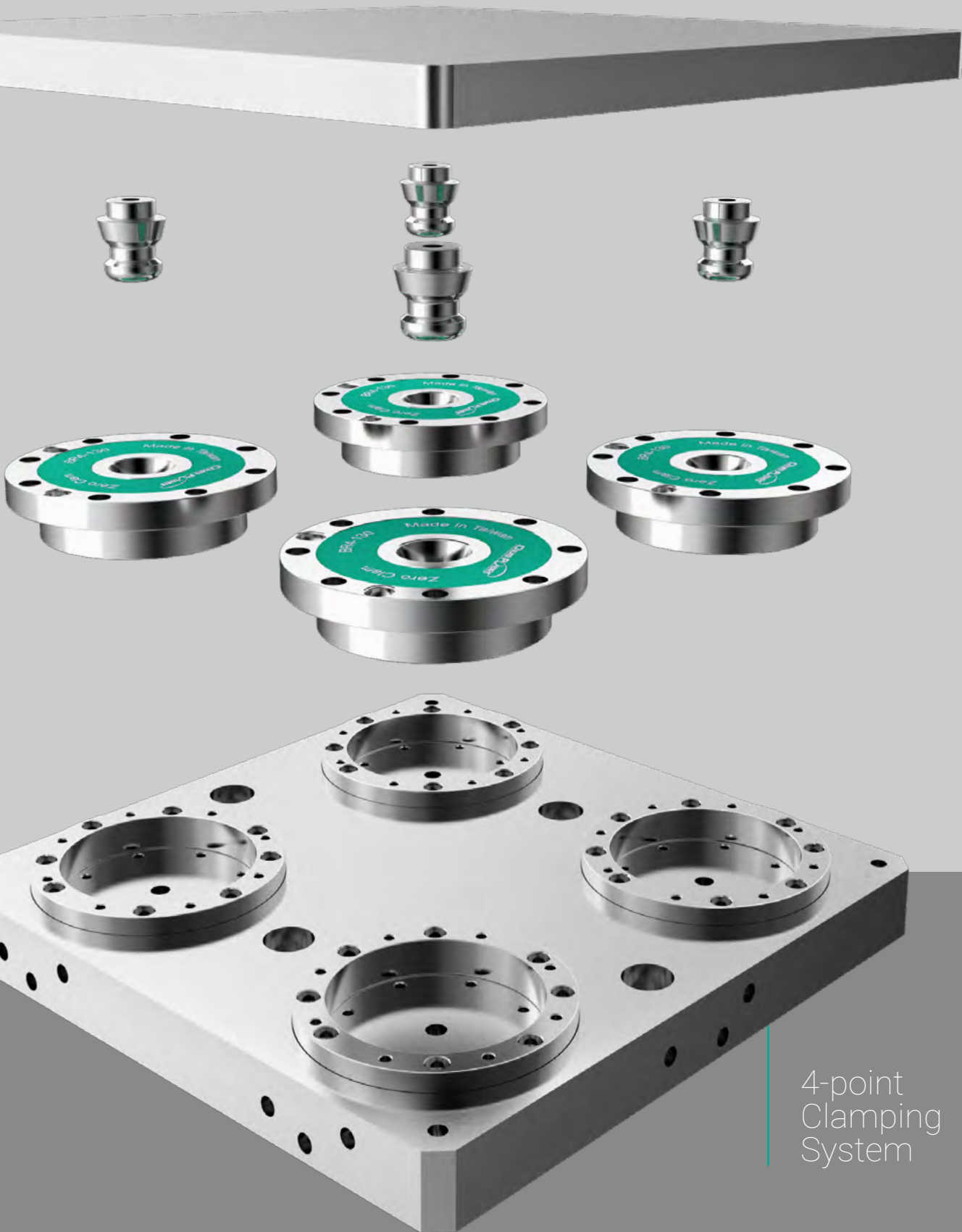
CNC 銑床工具機

Traditional Milling
Machine / Special
Purpose Machine

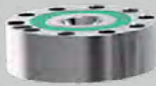
傳統銑床 / 專用加工機

Other Type of
Machine
(Welding、EDM、Wire Cutting)

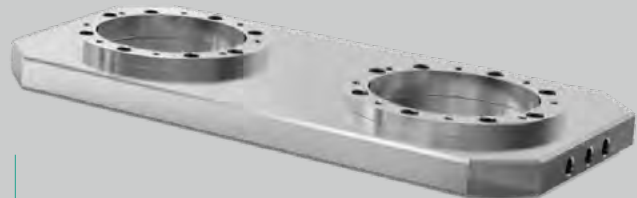
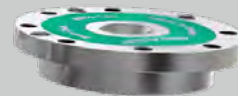
特殊加工機
(焊接、放電、線割)



4-point
Clamping
System



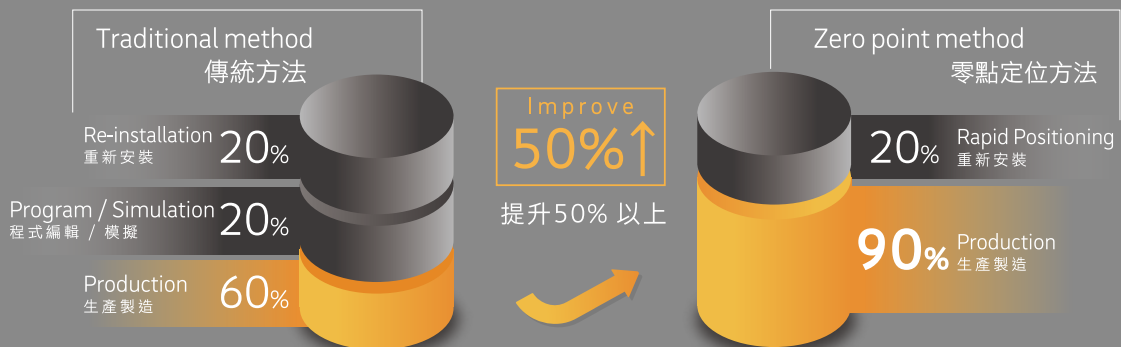
1-Point Clamping System



2-Point Clamping System

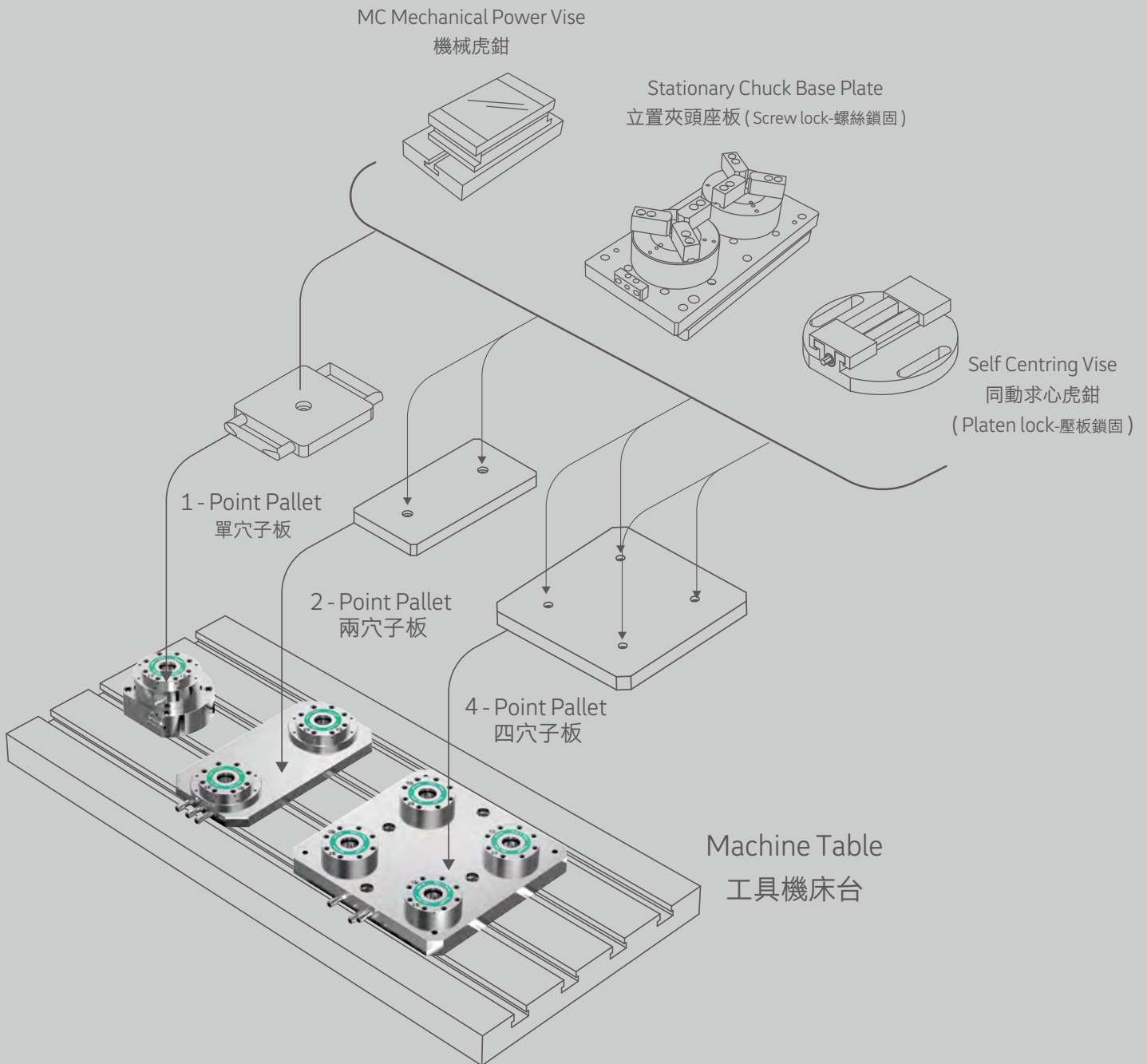
Efficiency

生產效率



Installation

安裝



Zero Point Clamping System

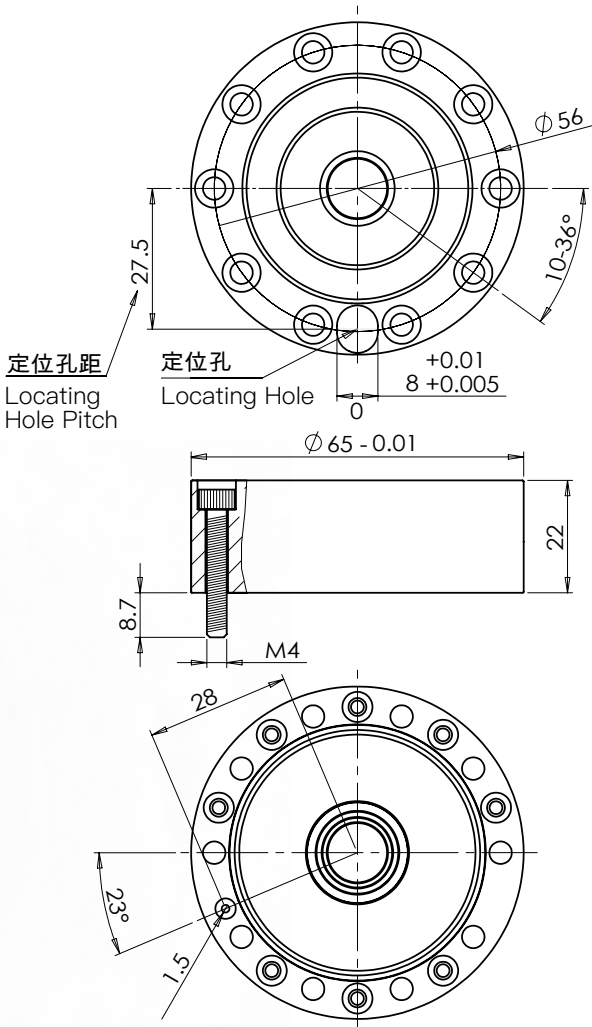


零點定位器本體	Clamping Module		
CPA-065	零點定位器 Ø65 型	Clamping Module. Ø65	2
CPA-100	零點定位器 Ø100 型	Clamping Module. Ø100	3
CPA-130	零點定位器 Ø130 型	Clamping Module. Ø130	4
各式母板	Clamping Stations		
CPA-B08	65 型母板一穴	1-Point Clamping Stations for Ø65	5
CPA-B06	母板一穴	1-Point Clamping Station for Ø100 / Ø130	6
CPA-B01	母板一穴	1-Point Clamping Station for Ø100 / Ø130	7
CPA-B07	65 型母板雙穴	2-Point Clamping Station for Ø65	8
CPA-B02/03/04	母板雙穴	2-Point Clamping Station	9
CPA-B05	母板四穴	4-Point Clamping Station for Ø100 / Ø130	10
各式子板	Clamping Pallets		
CPA-C09	65 型子板一穴	1-Point Pallet for Ø65	11
CPA-C07	65 型子板一穴	1-Point Pallet for Ø65	11
CPA-C04/05	子板一穴	1-Point Pallet for Ø100 / Ø130	12
CPA-C06	子板一穴	1-Point Pallet for Ø100 / Ø130	12
CPA-C08	65 型子板雙穴	2-Point Pallet for Ø65	13
CPA-C01/02	子板雙穴	2-Point Pallet for Ø100 / Ø130	13
CPA-C03	子板雙穴	2-Point Pallet for Ø100 / Ø130	14
各式拉栓	Clamping Pins		
CPA-D07	65 拉栓 (有牙)	Clamping Pin for Ø65	14
CPA-D01	65 拉栓 (有牙)	Clamping Pin	15
CPA-D02	65 拉栓 (無牙)	Clamping Pin	15
CPA-D03	軸向拉栓 (有牙)	Clamping Pin	15
CPA-D04	軸向拉栓 (無牙)	Clamping Pin	16
CPA-D05	夾緊拉栓 (有牙)	Clamping Pin	16
CPA-D06	夾緊拉栓 (無牙)	Clamping Pin	16
選配	Option		17
系統整合	System Integration		18

CPA-065

Clamping Module. Ø65

零點定位器 Ø65 型



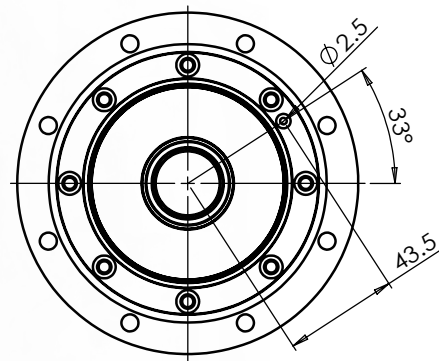
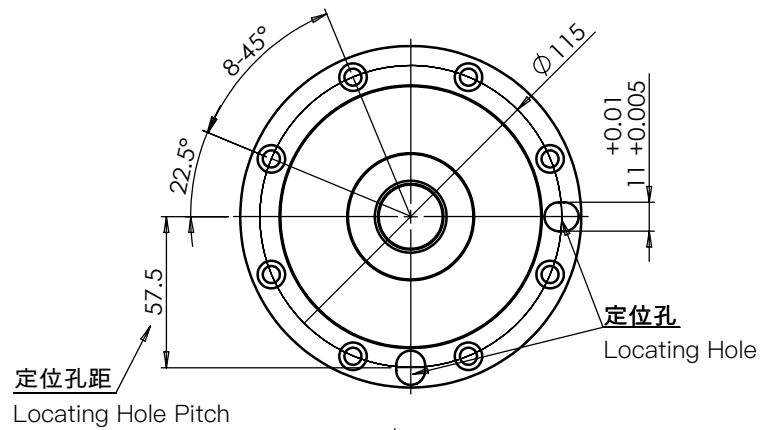
Item No. 產品編號	Non-Pressure Force 無加壓拉力 (kg)	Repeatability 拉栓重複定位 (mm)	Weight 重量 (kg)	Min. Opening Pressure 最低供氣壓力 (bar)
BTMJM065A100	4000	<0.005	0.45	6~7

✖ 拉栓選配 Clamping Pins Optional : CPA-D07 p.14

CPA-100

Clamping Module. Ø100

零點定位器 Ø100 型



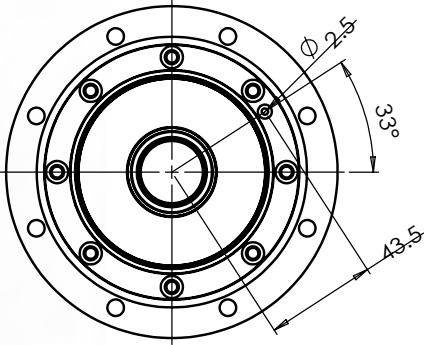
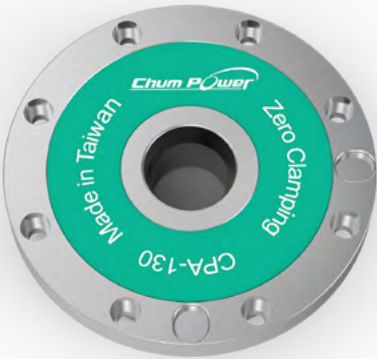
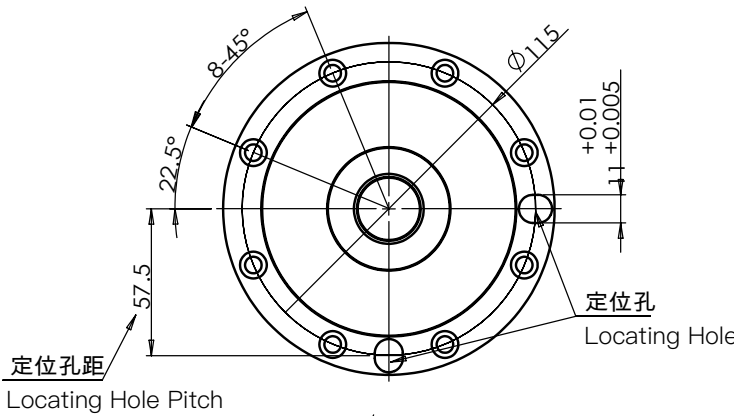
Item No. 產品編號	Pressure Force 加壓拉力 (kg)	Non-Pressure Force 無加壓拉力 (kg)	Repeatability 拉栓重複定位 (mm)	Weight 重量 (kg)	Min. Opening Pressure 最低供氣壓力 (bar)
BTMJM100A100	2700	1000	<0.005	1.5	6~7

✂ 拉栓選配 Clamping Pins Optional : p.15

CPA-130

Clamping Module. Ø130

零點定位器 Ø130 型



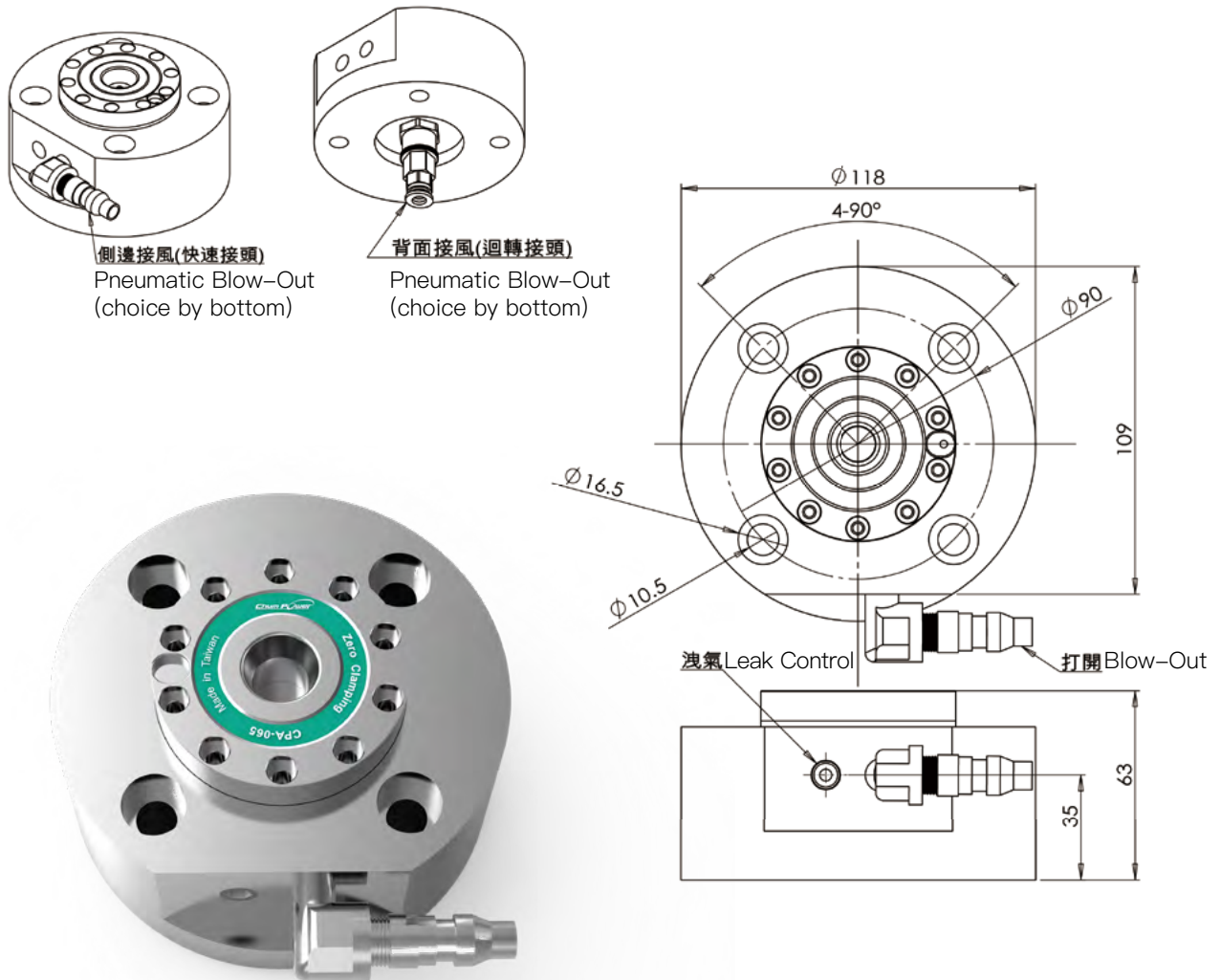
Item No. 產品編號	Pressure Force 加壓拉力 (kg)	Non-Pressure Force 無加壓拉力 (kg)	Repeatability 拉栓重複定位 (mm)	Weight 重量 (kg)	Min. Opening Pressure 最低供氣壓力 (bar)
BTMJM130A100	2700	1000	<0.005	2.1	6~7

✂ 拉栓選配 Clamping Pins Optional : p.15

CPA-B08

1-Point Clamping Station for Ø65

65 型母板一穴



Item No. 產品編號	Weight 總重量 (kg)	Material 材質
BTFJAB14A100	1.2	鋁 Aluminum (硬陽處理)

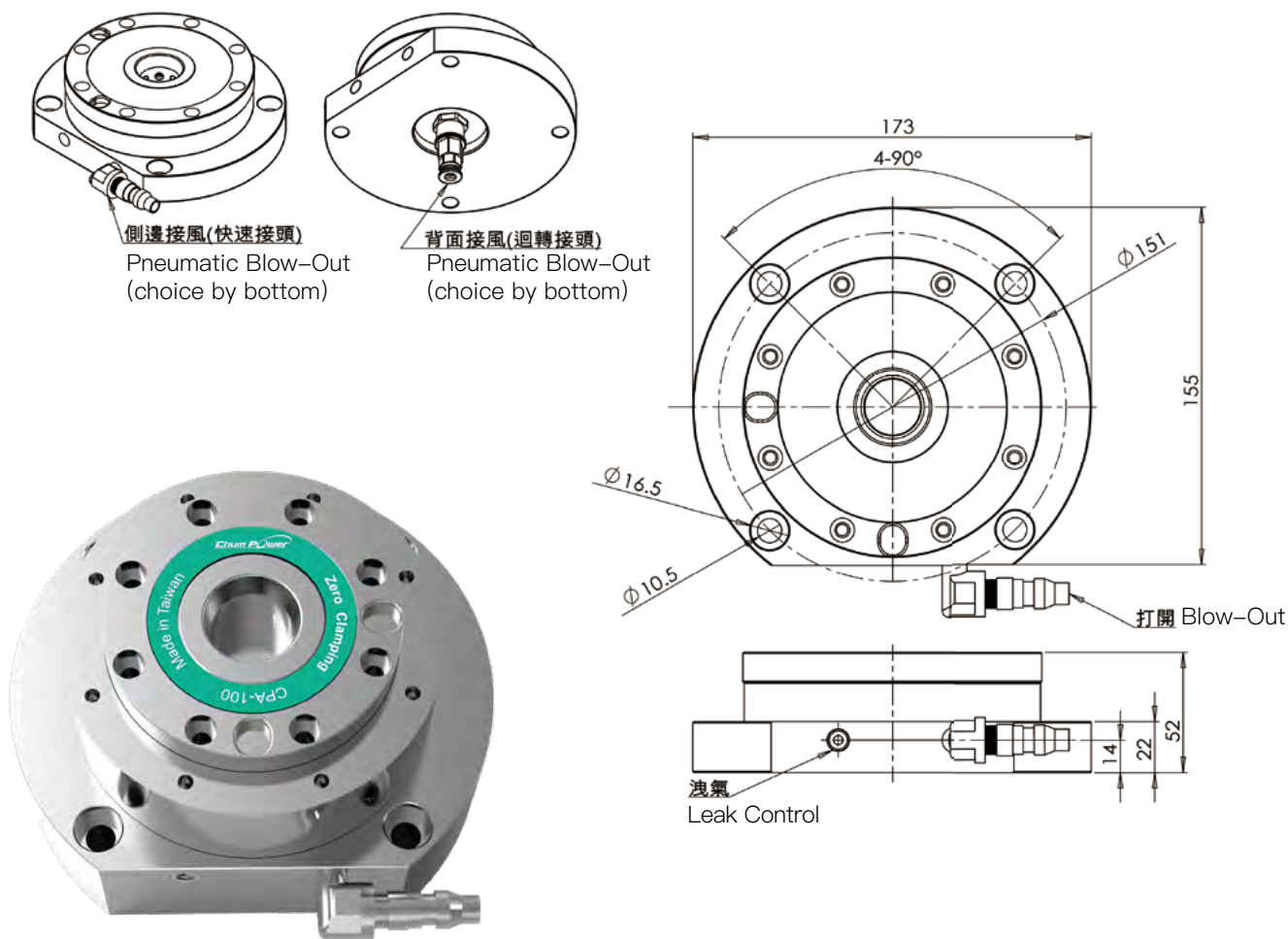
✂ 拉栓選配 Clamping Pins Optional CPA-D07 p.14

✂ 子板選配 Clamping Pallets Optional CPA-C07 p.11
CPA-C09 p.11

CPA-B06

1-Point Clamping Station for Ø100 / Ø130

母板一穴



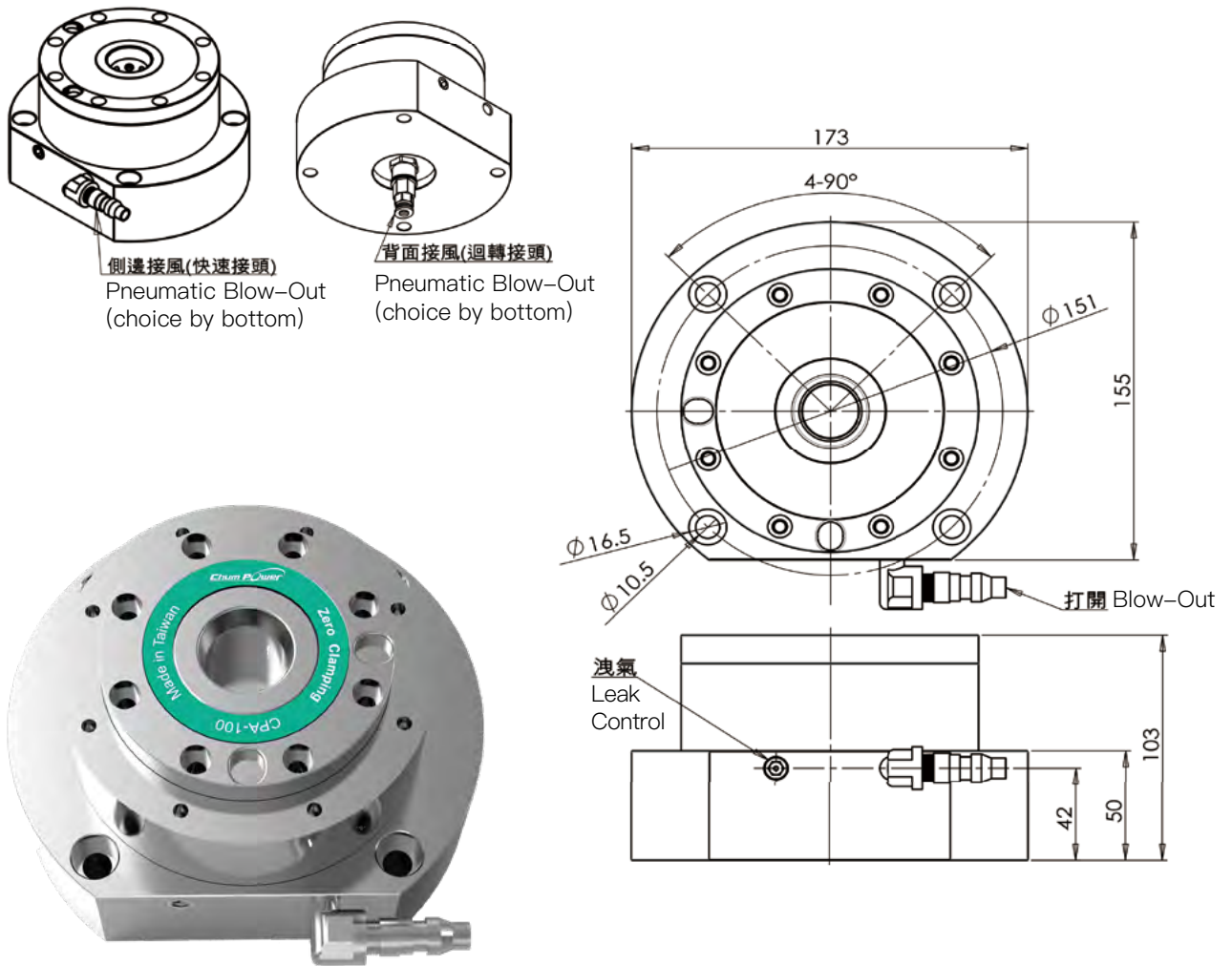
Item No. 產品編號	Weight 總重量 (kg)	Material 材質
BTFJAB01A100	4	S45C

- ✘ 拉栓選配 Clamping Pins Optional : p.15
- ✘ 子板選配 Clamping Pallets Optiona CPA-C04 p.12
CPA-C05 p.12
CPA-C06 p.12

CPA-B01

1-Point Clamping Station for Ø100 / Ø130

母板一穴



Item No. 產品編號	Weight 總重量 (kg)	Material 材質
BTFJAB02A100	4	鋁 (硬陽處理)

✘ 拉栓選配 Clamping Pins Optional : p.15

✘ 子板選配 Clamping Pallets Optional CPA-C04 p.12

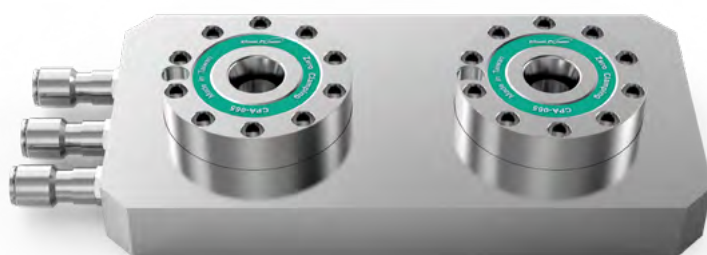
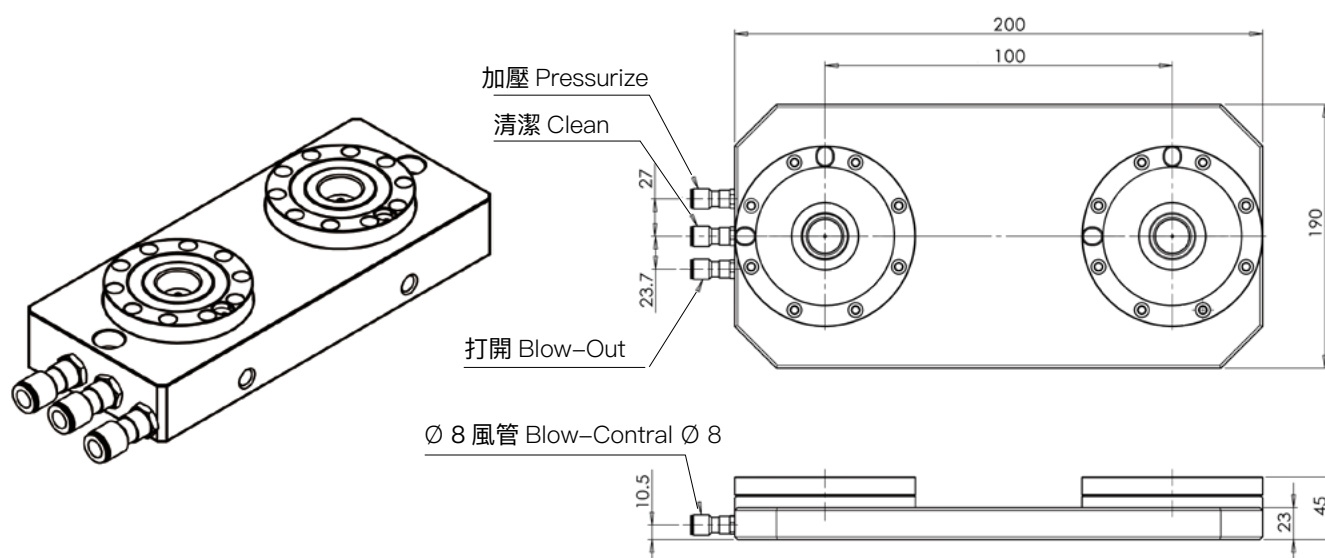
CPA-C05 p.12

CPA-C06 p.12

CPA-B07

2-Point Clamping Station for Ø65

65 型母板雙穴



Item No. 產品編號	孔距 Pitch	Weight 總重量 (kg)	Material 材質
BTFJAB16A100	100	3	S45C

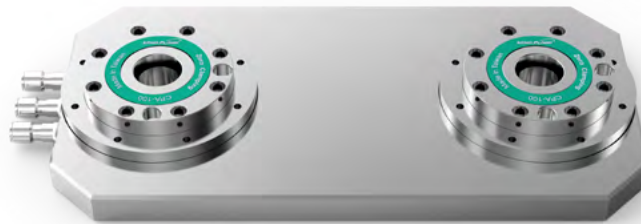
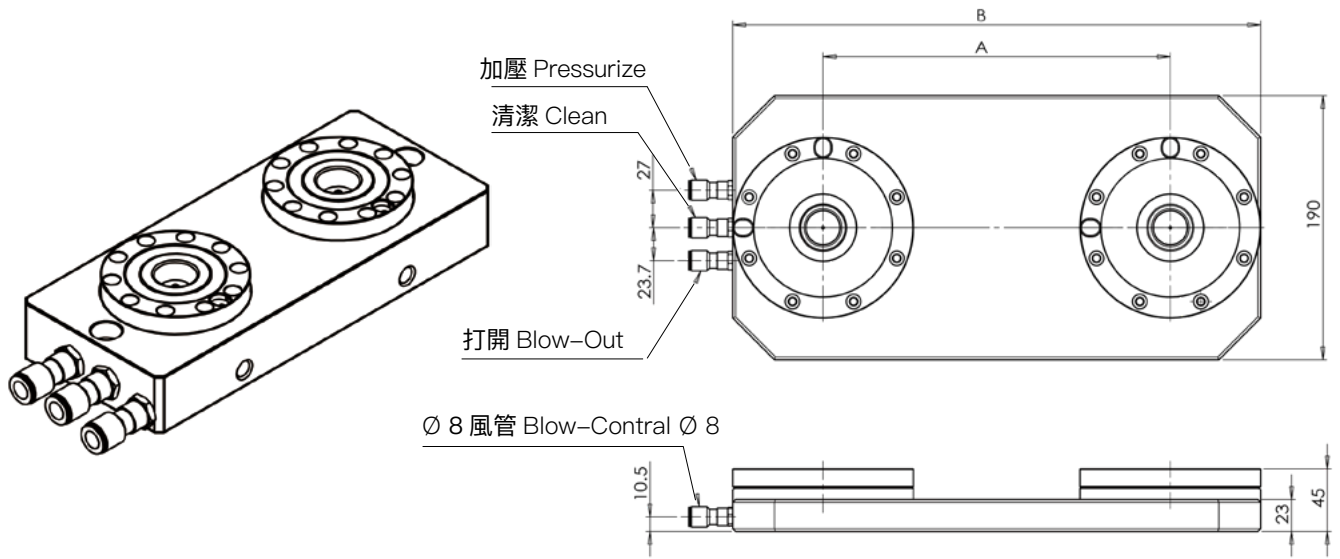
✂ 拉栓選配 Clamping Pins Optional CPA-D07 p.14

✂ 子盤選配 Clamping Pallets Optional CPA-C08 p.13

CPA-B02/CPA-B03/CPA-B04

2-Point Clamping Station

母板雙穴



Item No. 產品編號	孔距 Pitch		Weight 總重量 (kg)	Material 材質
	A (mm)	B (mm)		
BTFJAB04A100	150	300	9.5	S45C 染黑處理 Black Treatment
BTFJAB05A100	250	380	12	
BTFJAB12A100	200	338	11	

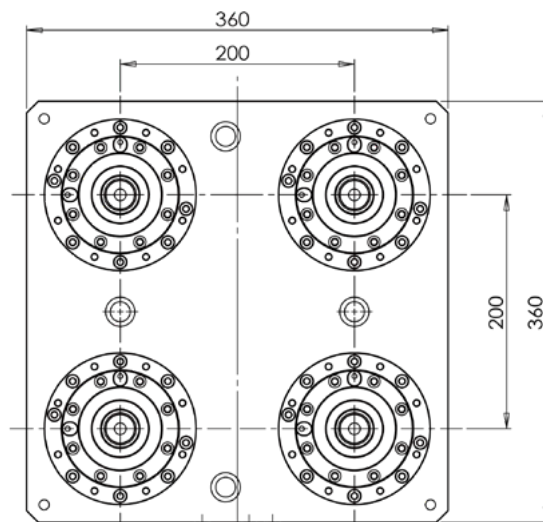
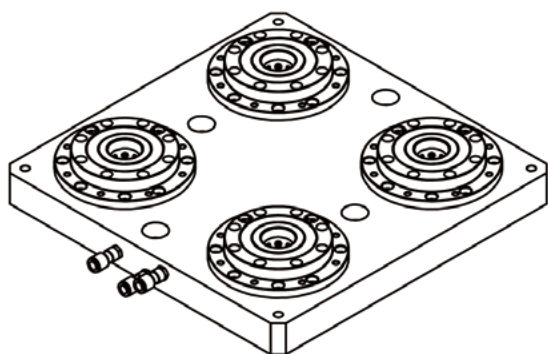
✘ 拉栓選配 Clamping Pins Optional : p.15

✘ 子板選配 Clamping Pallets Optiona CPA-C01 p.12
CPA-C02 p.12
CPA-C03 p.12

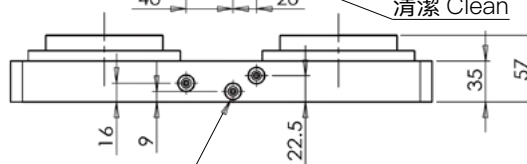
CPA-B05

4-Point Clamping Station for Ø100 / Ø130

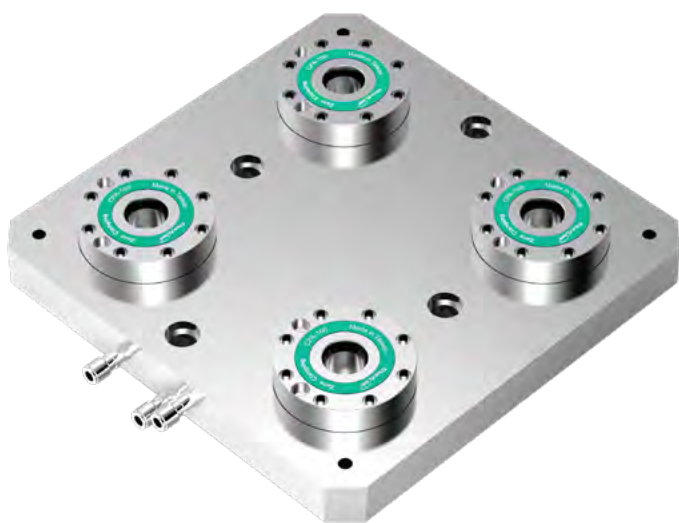
母板四穴



加壓 Pressurize 打開 Blow-Out
清潔 Clean



3- Ø 8 風管 Blow-Contral Ø 8



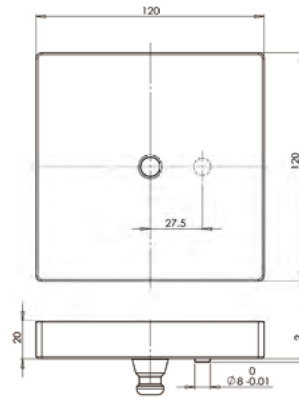
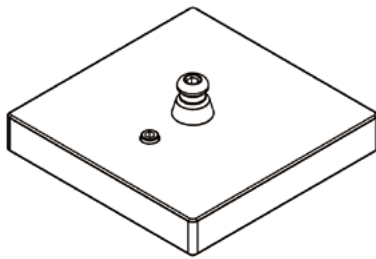
Item No. 產品編號	孔距 Pitch	Weight 總重量 (kg)	Material 材質
BTFJAB11A100	200x200	31	S45C

* 此產品子板為客製，若有需求請洽業務 Customized Pallet On Request

CPA-C09

1-Point Pallet for Ø65

65 型子板一穴



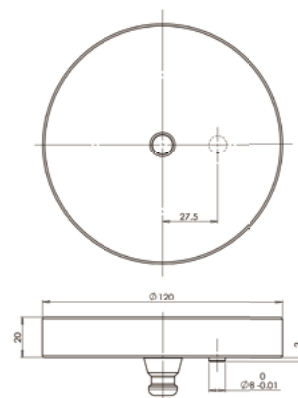
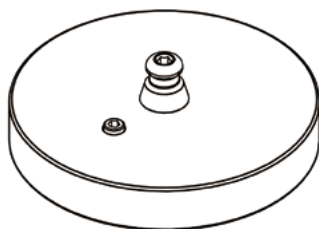
Item No. 產品編號	Weight 總重量 (kg)	Material 材質
BTFJAC08A100	2	S45C (鍍硬鉻處理) Chrome Plated

✂ 拉栓選配 Clamping Pins Optional : CPA-D07 p.14

CPA-C07

1-Point Pallet for Ø65

65 型子板一穴



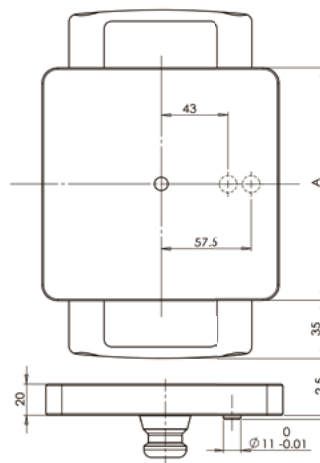
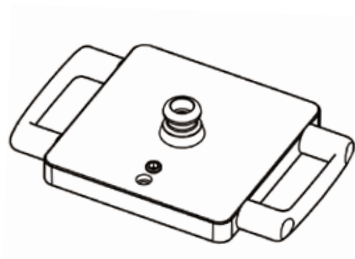
Item No. 產品編號	Weight 總重量 (kg)	Material 材質
BTFJAC09A100	0.6	AL6061 (鍍硬鉻處理) Chrome Plated

✂ 拉栓選配 Clamping Pins Optional : CPA-D07 p.14

CPA-C04/CPA-C05

1-Point Pallet for Ø100 / Ø130

子板一穴



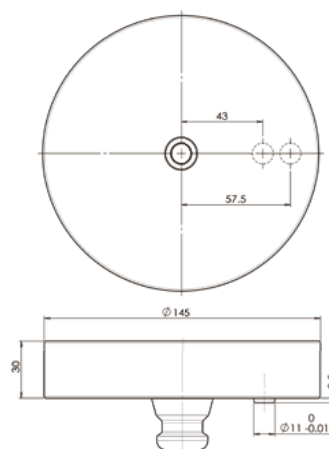
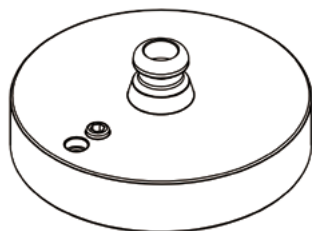
Item No. 產品編號	AxA	Weight 總重量 (kg)	Material 材質
BTFJAC03A100	150x150	3.5	S45C (鍍硬鉻處理) Chrome Plated
BTFJAC05A100	200x200	6.3	

✖ 拉栓選配 Clamping Pins Optionall : p.15

CPA-C06

1-Point Pallet for Ø100 / Ø130

子板一穴



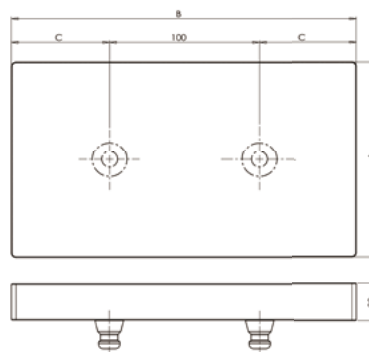
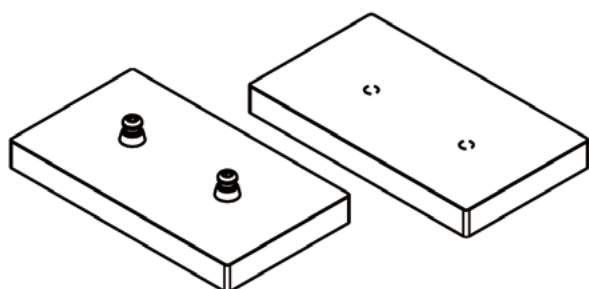
Item No. 產品編號	Weight 總重量 (kg)	Material 材質
BTFJAC04A100	1.3	AL6061 (鍍硬鉻處理) Hard Anodizing

✖ 拉栓選配 Clamping Pins Optionalll : p.15

CPA-C08

2-Point Pallet for Ø65

65 型子板雙穴



厚度 Thickness (mm)

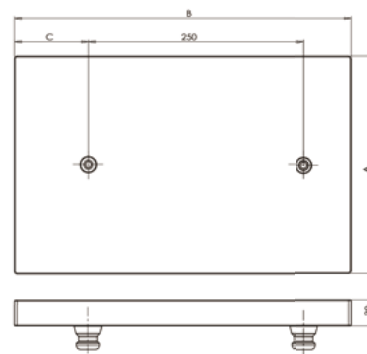
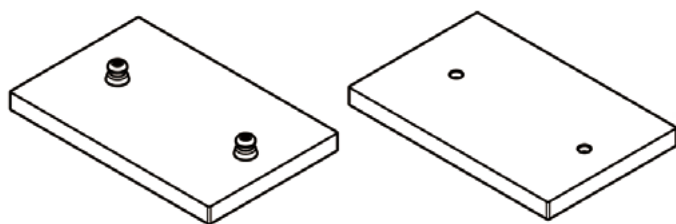
Item No. 產品編號	拉栓距離 Pitch	規格 (mm)			厚度 (mm)	Weight 總重量 (kg)	Material 材質
		A	B	C			
BTFJAC10A100	100	130	230	85	30	2.1	鋁 (硬陽處理)

✳ 拉栓選配 Clamping Pins Optional : CPA-D07 p.14

CPA-C01/CPA-C02

2-Point Pallet for Ø100 / Ø130

子板雙穴



厚度 Thickness (mm)

* Only for Ø100/Ø130

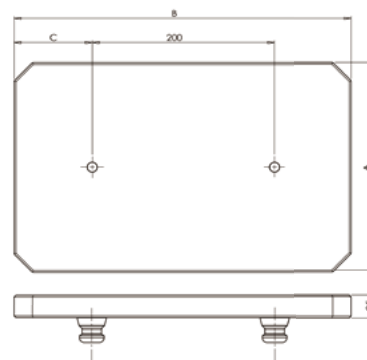
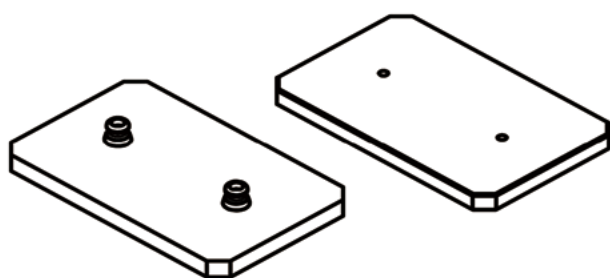
Item No. 產品編號	拉栓距離 Pitch	規格 (mm)			厚度 (mm)	Weight 總重量 (kg)	Material 材質
		A	B	C			
BTFJAC01A100	250	252	390	70	30	8	鋁 (硬陽處理)
BTFJAC02A100	250	290	450	85			

✳ 拉栓選配 : Clamping Pins Optional : p.15

CPA-C03

2-Point Pallet for Ø100 / Ø130

子板雙穴



* Only for Ø100/Ø130

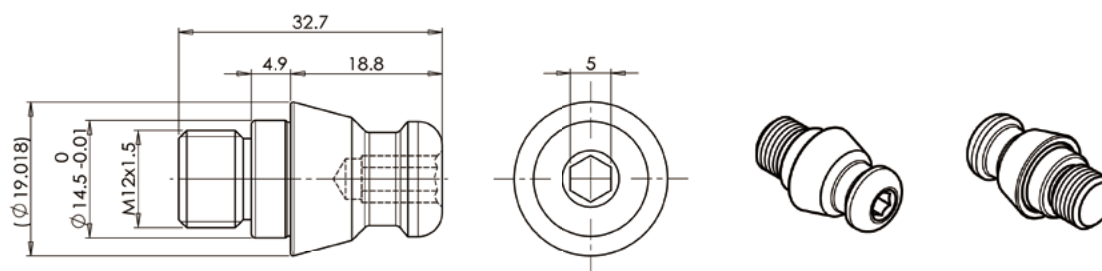
Item No. 產品編號	拉栓距離 Pitch	規格 (mm)			厚度 (mm)	Weight 總重量 (kg)	Material 材質
		A	B	C			
BTFJAC06A100	200	230	370	85	30	5.5	鋁 (硬陽處理)

✳ 拉栓選配 Clamping Pins Optional : p.15

CPA-D07

Clamping Pin for Ø65

65 拉栓 (有牙 Thread)

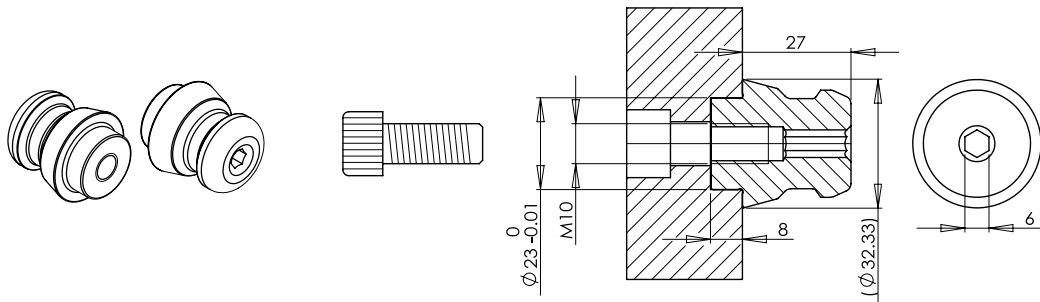


Item No. 產品編號	Weight 總重量 (kg)
BTFJAA13A100	0.03

CPA-D01

Clamping Pin

拉栓 (有牙 Thread)

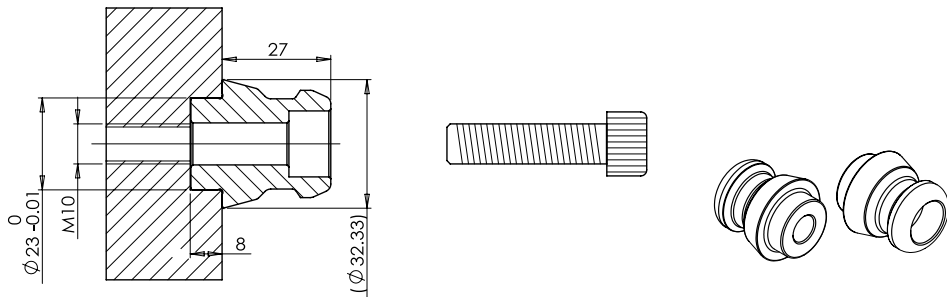


Item No. 產品編號	Weight 總重量 (kg)
BTFJAA03A100	0.1

CPA-D02

Clamping Pin

拉栓 (無牙 Without Thread)

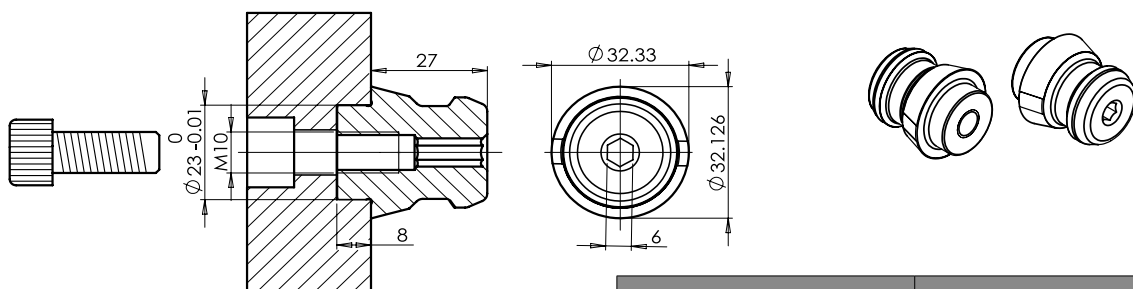


Item No. 產品編號	Weight 總重量 (kg)
BTFJAA04A100	1

CPA-D03

Clamping Pin

軸向拉栓 Axial Pins (有牙 Thread)

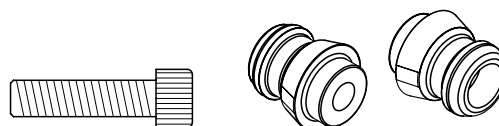
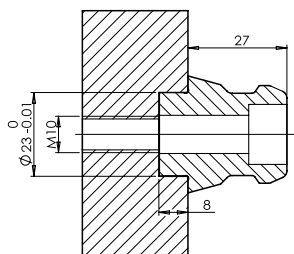


Item No. 產品編號	Weight 總重量 (kg)
BTFJAA19A100	0.1

CPA-D04

Clamping Pin

軸向拉栓 Axial Pins (無牙 Without Thread)

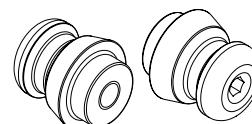
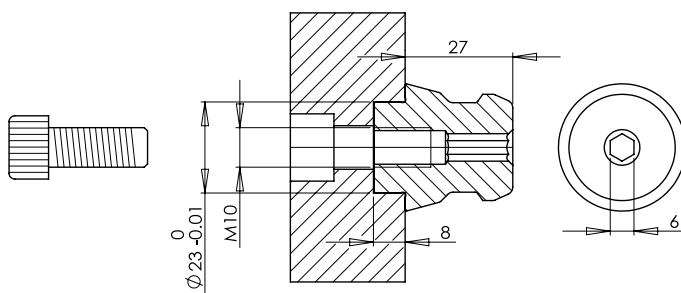


Item No. 產品編號	Weight 總重量 (kg)
BTFJAA20A100	0.1

CPA-D05

Clamping Pin

夾緊拉栓 (有牙 Thread)

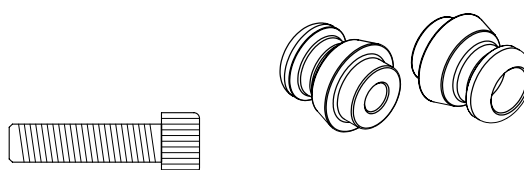
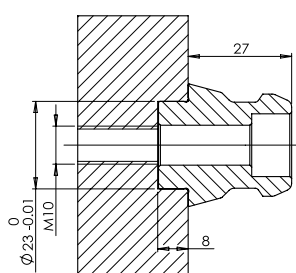


Item No. 產品編號	Weight 總重量 (kg)
BTFJAA21A100	0.1

CPA-D06

Clamping Pin

夾緊拉栓 (無牙 Without Thread)



Item No. 產品編號	Weight 總重量 (kg)
BTFJAA22A100	0.1

Option 選配



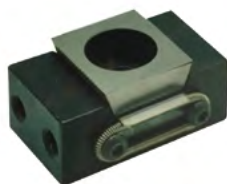
機械手臂

Robot Arm



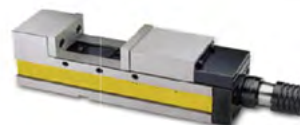
同動求心虎鉗

Self Centring Vise



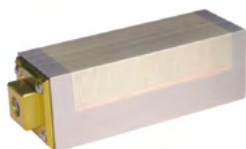
迷你虎鉗

Mini Vise



油壓虎鉗

Mc Hydraulic Vise



標準 (強力) 磁座

Standard (powerful) Permanent Magnetic Chuck



永磁電磁盤

Permanent Magnetic Chuck



刀桿

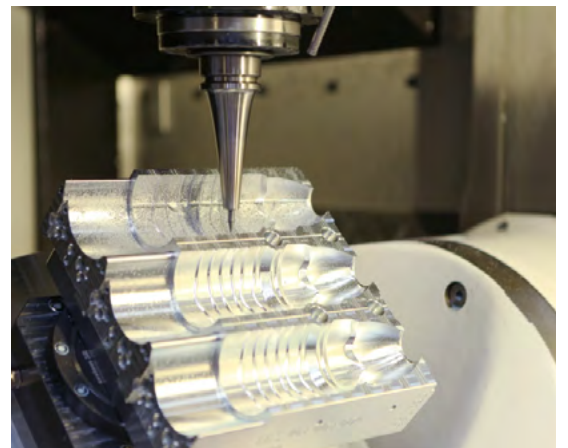
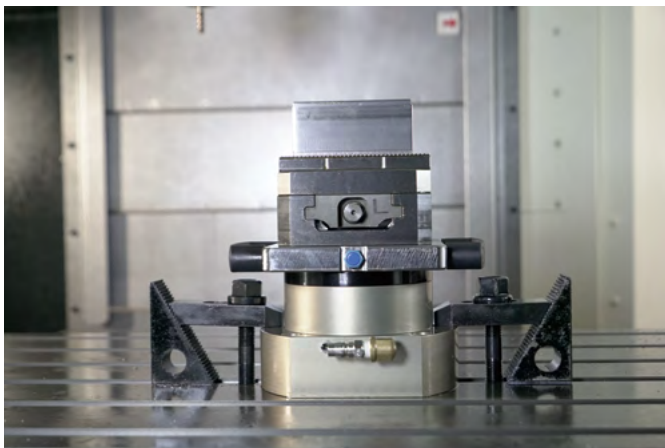
Drill Chuck Tool Holder



* 更多夾頭、刀桿
More Tool Chuck
and Tool Holder

System Integration

系統整合

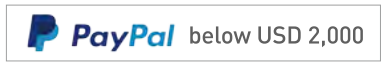


銓寶不只提供精密鑽夾頭，亦提供系統整合解決方案，幫助您輕鬆走向工業 4.0!

CHUMPOWER not only offer the professional precision tooling chucks, also offer the System integration solution, help you to step into industry 4.0 easily!



Integrity to build reputation
Quality to determine future
Innovation to accomplish dream
Service to customer satisfaction



CHUMPOWER MACHINERY CORPORATION

No.688-1, Sec. 3, Zhongshan Rd., Wuri Dist, Taichung City 414, Taiwan
414 台中市烏日區中山路三段 688-1 號

TEL 886-4-2338-8289 FAX 886-4-2336-5626 Email dali@chumpower.com



* Reserve the right to modification due to technical requirement. Please refer to the physical product. *
因為技術上的需要，本公司保有變動的權利，產品以實物為主。