

CHUMPOWER

HYDRAULIC CHUCK SERIES



ECO Line

Strong torque power up to 550 Nm for rough milling, boring, drilling, reaming, boring, chamfering thread-milling including finish milling.

Normally, the hydraulic chuck is for finish milling, but there is so many customer want to use hydraulic chuck with advantage of the hydraulic chucks for rough milling.

ECO Line allows the use of hydraulic chucks for rough and finish milling with strong torque power and economical price.

If you use the hydraulic chuck ECO Line, you no longer need to use products such as ER system, milling chuck, shrinking fit chuck, and end-mill holder. This is because ECO Line offers a better solution than these products.

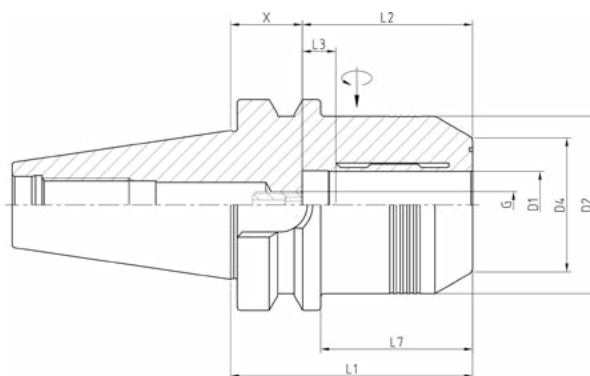
- Strong and Stable torque power up to 700 Nm
- Economical price
- For rough milling and finish milling, boring, drilling, reaming, thread-milling, chamfering
- Fine-balanced G2.5 / 25,000rpm or $U_{max} < 1$ gmm
- Repeat run-out accuracy is 0.003mm at 3 x D
- Vibration Damping Effect
- Axial length adjustment up to 10mm
- T-Wrench is enough for tool change
- Flexible clamping range with reduction sleeve



ECO Line

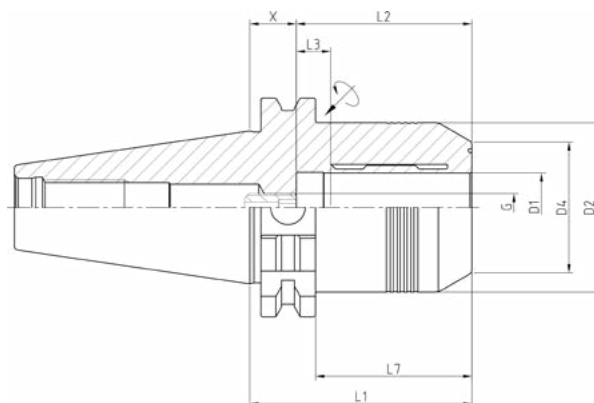
- ◆ Run-out accuracy : below 0.003mm at 3 x D
- ◆ Balancing grade : G2.5 / 25,000rpm or $U_{max} < 1$ gmm
- ◆ Axial length adjustment up to 10mm
- ◆ T-wernch is provided free of charge
- ◆ For ATC (automatic tool change)
- ◆ Taper tolerance : AT3 of better according to ISO standard
- ◆ Flexible clamping range with reduction sleeve
- ◆ Tool shank tolerance should be h6
- ◆ AD (center through) coolant system

JIS B 6339 - BT Eco Line



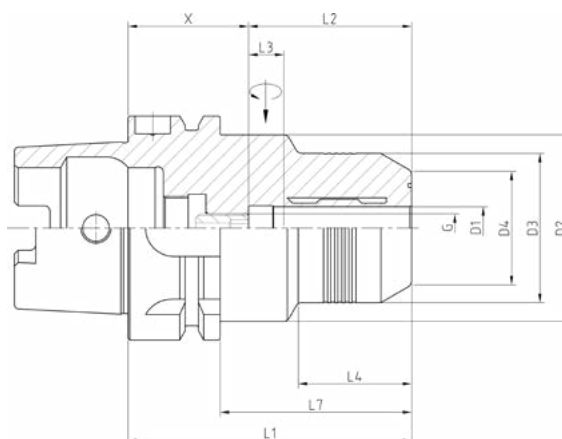
ITEM CODE	TYPE	D1 (mm)	D2 (mm)	D4 (mm)	X (mm)	L1 (mm)	L2 (mm)	L3 (mm)	L7 (mm)	G	Weight (kg)
BTECOBT30001	BT30-CHY12E-60	12	44.5	32	14	60	46	10	38	M8*1.0	0.7
BTECOBT30002	BT30-CHY20E-85	20	45	39	34	85	51	10	63	M8*1.0	0.9
BTECOBT40001	BT40-CHY12E-60	12	44.5	32	14	60	46	10	38	M8*1.0	1.2
BTECOBT40002	BT40-CHY20E-72.5	20	53	40	21.5	72.5	51	10	45.5	M8*1.0	1.4

DIN 69871 - SK Eco Line



ITEM CODE	TYPE	D1 (mm)	D2 (mm)	D4 (mm)	X (mm)	L1 (mm)	L2 (mm)	L3 (mm)	L7 (mm)	G	Weight (kg)
BTECOSK40001	SK40-CHY12E-50	12	44.5	32	4	50	46	10	30.9	M8*1.0	1.1
BTECOSK40002	SK40-CHY20E-64.5	20	49.25	38	13.5	64.5	51	10	45.4	M8*1.0	1.3

DIN 69893-1 - HSK 63A Eco Line



ITEM CODE	TYPE	D1 (mm)	D2 (mm)	D3 (mm)	D4 (mm)	X (mm)	L1 (mm)	L2 (mm)	L3 (mm)	L4 (mm)	L7 (mm)	G	Weight (kg)
BTECOHK63001	HSK63A-CHY12E-80	12	52.5	42	32	34	80	46	10	34	54	M8*1.0	1.4
BTECOHK63002	HSK63A-CHY20E-80	20	52.5	-	38	29	80	51	10	-	54	M8*1.0	1.4

Standard Line

The hydraulic chuck Standard Line will give you the best results in any application of machining such as finish milling, boring, drilling, reaming, thread-milling, chamfering, tapping or high- speed/high-precision machining.

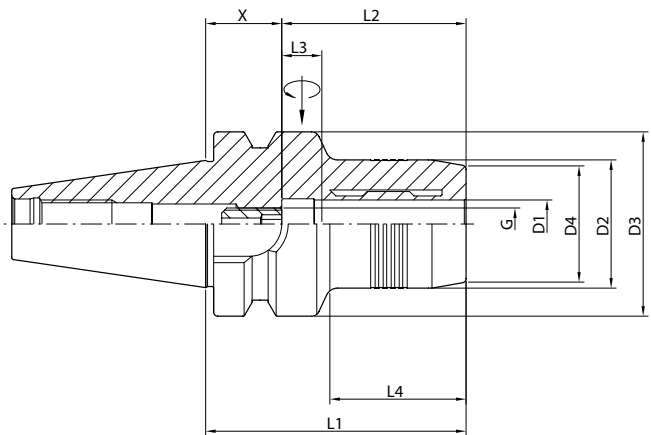
- Stable torque power up to 20 Nm ~ 650 Nm depend on inner bore size
- Repeat run-out accuracy is 0.003mm at 3 x D - Fine-balanced G2.5 / 25,000rpm or $U_{max} < 1 \text{ gmm}$ - Vibration Damping Effect
- Axial length adjustment up to 10mm
- T-Wrench is enough for tool change
- Flexible clamping range with reduction sleeve
- Various type of shank (taper)
- For finish milling, boring, drilling, reaming, thread-milling, chamfering



Standard Line

- ◆ Run-out accuracy : below 0.003mm at 3 x D
- ◆ Balancing grade : G2.5 / 25,000rpm or $U_{max} < 1$ gmm
- ◆ Axial length adjustment up to 10mm
- ◆ T-wrench is provided free of charge
- ◆ For ATC (automatic tool change)
- ◆ Taper tolerance : AT3 or better according to ISO standard
- ◆ Flexible clamping range with reduction sleeve
- ◆ Tool shank tolerance should be h6
- ◆ AD (center through) coolant system

JIS B 6339 - BT30 Standard Line



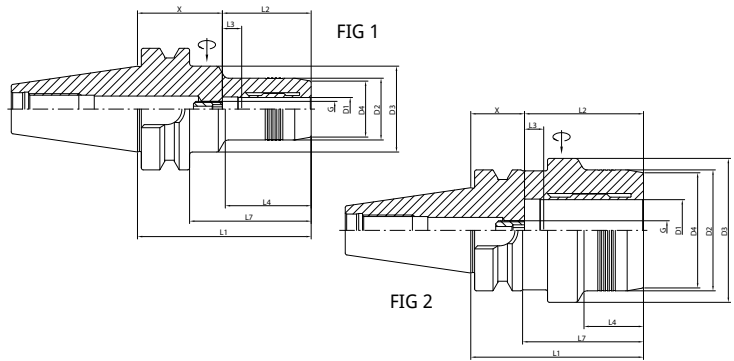
ITEM CODE	TYPE	D1 (mm)	D2 (mm)	D3 (mm)	D4 (mm)	X (mm)	L1 (mm)	L2 (mm)	L3 (mm)	L4 (mm)	G	Weight (kg)
BTSTDBT30001	BT30-CHY6-65	6	26	46	22	25	65	40	10	33	M5	0.7
BTSTDBT30002	BT30-CHY8-65	8	28	46	24	25	65	40	10	33	M6*1.0	0.7
BTSTDBT30003	BT30-CHY10-65	10	30	46	26	24	65	41	10	34	M8*1.0	0.7
BTSTDBT30004	BT30-CHY12-65	12	32	46	28	19	65	46	10	34	M8*1.0	0.7
BTSTDBT30005	BT30-CHY14-65	14	34	46	30	19	65	46	10	34	M8*1.0	0.7
BTSTDBT30006	BT30-CHY16-90	16	38	46	34	41	90	49	10	50	M8*1.0	0.9
BTSTDBT30007	BT30-CHY18-90	18	40	46	36	41	90	49	10	50	M8*1.0	0.9
BTSTDBT30008	BT30-CHY20-90	20	42	46	38	39	90	51	10	50	M10*1.0	0.9

REMARK

- Special design available on request
- CAT / BBT / NT available on request

- Long or short length and small or unique bore available on request
- Inch dimensions available on request

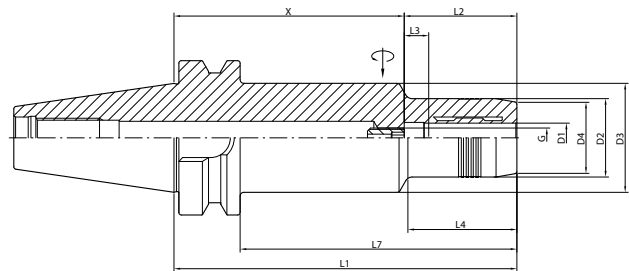
JIS B 6339 - BT40 Standard Line



ITEM CODE	TYPE	D1 (mm)	D2 (mm)	D3 (mm)	D4 (mm)	X (mm)	L1 (mm)	L2 (mm)	L3 (mm)	L4 (mm)	L7 (mm)	G	Weight (kg)	Fig
BTSTDBT40001	BT40-CHY6-90	6	26	44.5	22	50	90	40	10	43	63	M5	1.4	FIG 1
BTSTDBT40003	BT40-CHY8-90	8	28	44.5	24	50	90	40	10	44.5	63	M6	1.4	FIG 1
BTSTDBT40005	BT40-CHY10-90	10	30	44.5	26	49	90	41	10	44.5	63	M8*1.0	1.4	FIG 1
BTSTDBT40007	BT40-CHY12-90	12	32	44.5	28	44	90	46	10	44.5	63	M8*1.0	1.4	FIG 1
BTSTDBT40009	BT40-CHY14-90	14	34	44.5	30	44	90	46	10	44.5	63	M8*1.0	1.4	FIG 1
BTSTDBT40011	BT40-CHY16-90	16	38	44.5	34	41	90	49	10	47.5	63	M8*1.0	1.5	FIG 1
BTSTDBT40013	BT40-CHY18-90	18	40	50	36	41	90	49	10	47.5	63	M8*1.0	1.5	FIG 1
BTSTDBT40015	BT40-CHY20-90	20	42	50	38	39	90	51	10	47.5	63	M10*1.0	1.6	FIG 1
BTSTDBT40017	BT40-CHY25-90	25	57	68	53	33	90	57	10	31	63	M10*1.0	1.8	FIG 2
BTSTDBT40019	BT40-CHY32-90	32	63	75	60	28	90	62	10	31	63	M10*1.0	1.9	FIG 2

REMARK • Special design available on request • Long or short length and small or unique bore available on request
 • CAT / BBT / NT available on request • Inch dimensions available on request

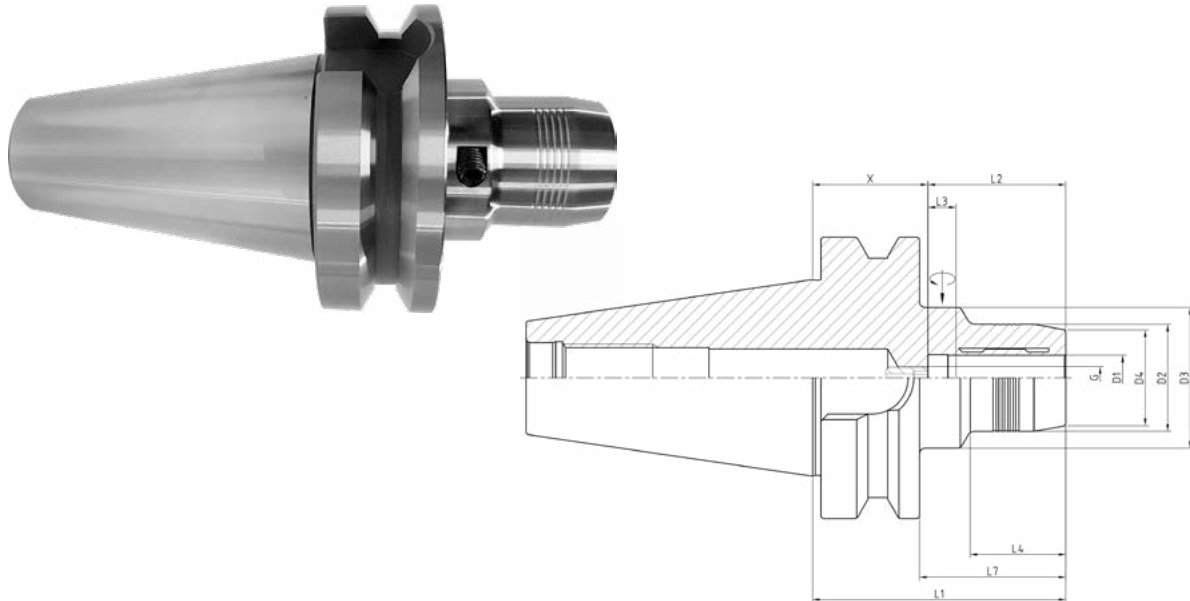
JIS B 6339 - BT40 Standard Line - Long



ITEM CODE	TYPE	D1 (mm)	D2 (mm)	D3 (mm)	D4 (mm)	X (mm)	L1 (mm)	L2 (mm)	L3 (mm)	L4 (mm)	L7 (mm)	G	Weight (kg)
BTSTDBT40002	BT40-CHY6-140	6	26	44.5	22	100	140	40	10	43	113	M5	1.8
BTSTDBT40004	BT40-CHY8-140	8	28	44.5	24	100	140	40	10	44.5	113	M6	1.8
BTSTDBT40006	BT40-CHY10-140	10	30	44.5	26	99	140	41	10	44.5	113	M8*1.0	1.8
BTSTDBT40008	BT40-CHY12-140	12	32	44.5	28	94	140	46	10	44.5	113	M8*1.0	1.8
BTSTDBT40010	BT40-CHY14-140	14	34	44.5	30	94	140	46	10	44.5	113	M8*1.0	1.8
BTSTDBT40012	BT40-CHY16-140	16	38	44.5	34	91	140	49	10	47.5	113	M8*1.0	1.9
BTSTDBT40014	BT40-CHY18-140	18	40	50	36	91	140	49	10	47.5	113	M8*1.0	1.9
BTSTDBT40016	BT40-CHY20-140	20	42	50	38	89	140	51	10	47.5	113	M10*1.0	2.0
BTSTDBT40018	BT40-CHY25-140	25	57	63	53	83	140	57	10	50	113	M10*1.0	2.2
BTSTDBT40020	BT40-CHY32-140	32	63	63	60	78	140	62	10	-	113	M10*1.0	2.3

REMARK • Special design available on request • Long or short length and small or unique bore available on request
 • CAT / BBT / NT available on request • Inch dimensions available on request

JIS B 6339 - BT50 Standard Line

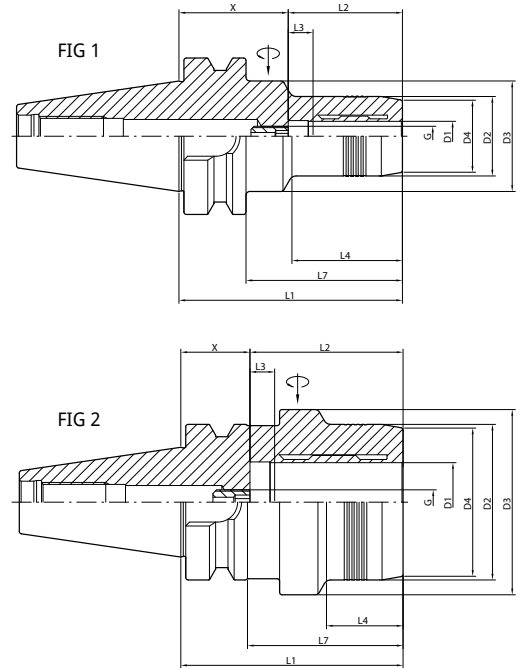


ITEM CODE	TYPE	D1 (mm)	D2 (mm)	D3 (mm)	D4 (mm)	X (mm)	L1 (mm)	L2 (mm)	L3 (mm)	L4 (mm)	L7 (mm)	G	Weight (kg)
BTSTDBT50001	BT50-CHY6-90	6	26	44.5	22	50	90	40	10	34	52	M5	3.9
BTSTDBT50002	BT50-CHY8-90	8	28	44.5	24	50	90	40	10	34	52	M6	3.9
BTSTDBT50003	BT50-CHY10-90	10	30	44.5	26	49	90	41	10	34	52	M8*1.0	4.0
BTSTDBT50004	BT50-CHY12-90	12	32	44.5	28	44	90	46	10	34	52	M8*1.0	4.0
BTSTDBT50005	BT50-CHY14-90	14	34	50	30	44	90	46	10	34	52	M8*1.0	4.1
BTSTDBT50006	BT50-CHY16-90	16	38	50	34	41	90	49	10	34	52	M8*1.0	4.1
BTSTDBT50007	BT50-CHY18-90	18	40	50	36	41	90	49	10	34	52	M8*1.0	4.1
BTSTDBT50008	BT50-CHY20-90	20	42	53	38	39	90	51	10	34	52	M10*1.0	4.1
BTSTDBT50009	BT50-CHY20-140	20	42	50	38	89	140	51	10	47.5	102	M10*1.0	4.8
BTSTDBT50010	BT50-CHY25-90	25	57	68	53	33	90	57	10	34	52	M10*1.0	4.1
BTSTDBT50011	BT50-CHY32-90	32	63	75	60	28	90	62	10	34	52	M10*1.0	4.1

REMARK • Special design available on request
• CAT / BBT / NT available on request

• Long or short length and small or unique bore available on request
• Inch dimensions available on request

DIN 69871 - SK40 Standard Line

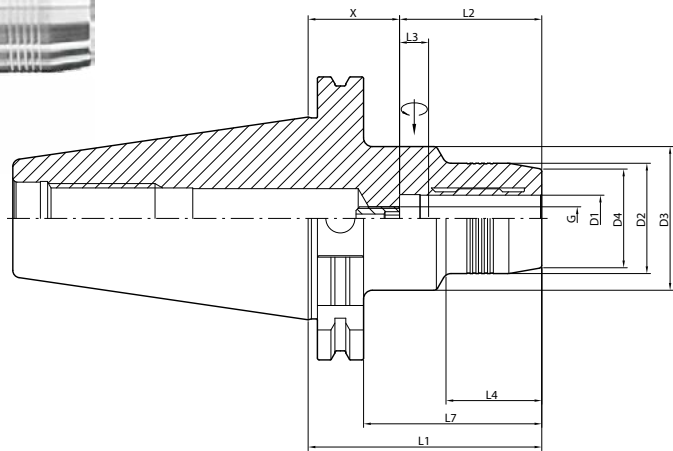


ITEM CODE	TYPE	D1 (mm)	D2 (mm)	D3 (mm)	D4 (mm)	X (mm)	L1 (mm)	L2 (mm)	L3 (mm)	L4 (mm)	L7 (mm)	G	Weight (kg)	Fig
BTSTDSK40001	SK40-CHY6-80.5	6	26	49.5	22	40.5	80.5	40	10	29.5	61.4	M5	1.4	FIG 1
BTSTDSK40002	SK40-CHY8-80.5	8	28	49.5	24	40.5	80.5	40	10	30	61.4	M6	1.4	FIG 1
BTSTDSK40003	SK40-CHY10-80.5	10	30	49.5	26	39.5	80.5	41	10	31	61.4	M8*1.0	1.4	FIG 1
BTSTDSK40004	SK40-CHY12-80.5	12	32	49.5	28	34.5	80.5	46	10	31.5	61.4	M8*1.0	1.4	FIG 1
BTSTDSK40005	SK40-CHY16-80.5	16	38	49.5	34	31.5	80.5	49	10	33	61.4	M8*1.0	1.4	FIG 1
BTSTDSK40006	SK40-CHY20-80.5	20	42	49.5	38	29.5	80.5	51	10	34	61.4	M10*1.0	1.4	FIG 1
BTSTDSK40007	SK40-CHY25-80.5	25	55	66	53	23.5	80.5	57	10	22	61.4	M10*1.0	1.8	FIG 2
BTSTDSK40008	SK40-CHY32-80.5	32	63	78	60	18.5	80.5	62	10	25.5	61.4	M10*1.0	2	FIG 2

REMARK • Special design available on request
• CAT / BBT / NT available on request

• Long or short length and small or unique bore available on request
• Inch dimensions available on request

DIN 69871 - SK50 Standard Line

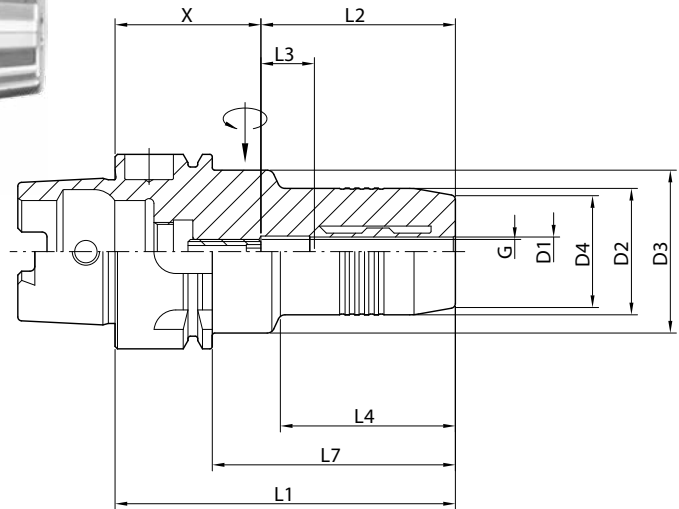
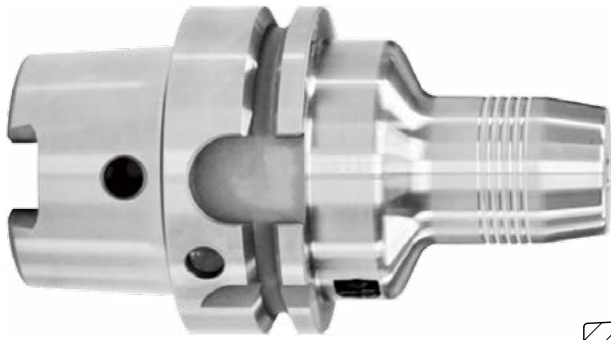


ITEM CODE	TYPE	D1 (mm)	D2 (mm)	D3 (mm)	D4 (mm)	X (mm)	L1 (mm)	L2 (mm)	L3 (mm)	L4 (mm)	L7 (mm)	G	Weight (kg)
BTSTDSK50001	SK50-CHY6-80.5	6	26	49.5	22	40.5	80.5	40	10	29.5	61.4	M5	3.2
BTSTDSK50002	SK50-CHY8-80.5	8	28	49.5	24	40.5	80.5	40	10	30	61.4	M6	3.2
BTSTDSK50003	SK50-CHY10-80.5	10	30	49.5	26	39.5	80.5	41	10	31	61.4	M8*1.0	3.2
BTSTDSK50004	SK50-CHY12-80.5	12	32	49.5	28	34.5	80.5	46	10	31.5	61.4	M8*1.0	3.2
BTSTDSK50005	SK50-CHY16-80.5	16	38	49.5	34	31.5	80.5	49	10	33	61.4	M8*1.0	3.3
BTSTDSK50006	SK50-CHY20-80.5	20	42	49.5	38	29.5	80.5	51	10	34	61.4	M10*1.0	3.3
BTSTDSK50007	SK50-CHY25-80.5	25	55	66	53	23.5	80.5	57	10	35	61.4	M10*1.0	3.4
BTSTDSK50008	SK50-CHY32-80.5	32	63	75	60	18.5	80.5	62	10	35	61.4	M10*1.0	3.5

REMARK • Special design available on request
• CAT / BBT / NT available on request

• Long or short length and small or unique bore available on request
• Inch dimensions available on request

DIN 69893 - HSK40A / HSK50A Standard Line

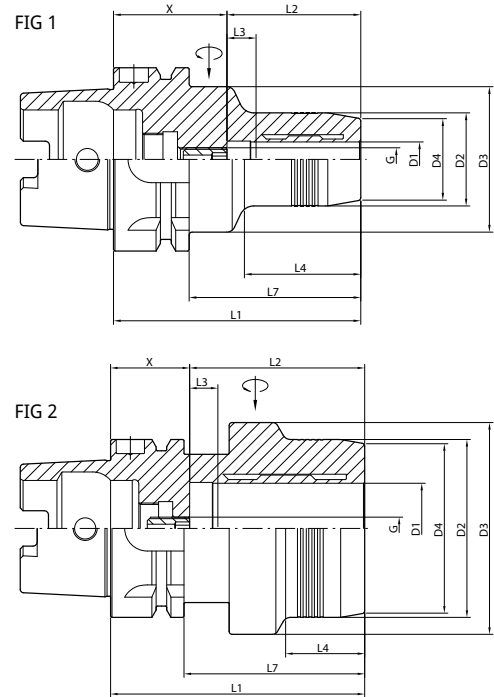
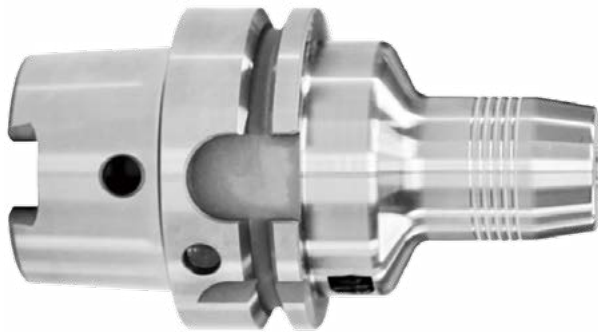


ITEM CODE	TYPE	D1 (mm)	D2 (mm)	D3 (mm)	D4 (mm)	X (mm)	L1 (mm)	L2 (mm)	L3 (mm)	L4 (mm)	L7 (mm)	G	Weight (kg)
HSK40A													
BTSTDHK40001	HSK40A-CHY6-70	6	26	33.5	22	30	70	37	10	36	50	M5	0.4
BTSTDHK40002	HSK40A-CHY8-70	8	28	33.5	24	33	70	37	10	36	50	M6	0.5
BTSTDHK40003	HSK40A-CHY10-75	10	30	33.5	26	34	75	41	10	42	55	M6	0.5
BTSTDHK40004	HSK40A-CHY12-80	12	32	33.5	28	34	80	46	10	48	60	M6	0.5
HSK50A													
BTSTDHK50001	HSK50A-CHY6-70	6	26	40	22	30	70	40	10	28	44	M5	0.7
BTSTDHK50002	HSK50A-CHY8-70	8	28	40	24	30	70	40	10	28	44	M6	0.7
BTSTDHK50003	HSK50A-CHY10-75	10	30	40	26	34	75	41	10	34	49	M8*1.0	0.7
BTSTDHK50004	HSK50A-CHY12-85	12	32	40	28	39	85	46	10	44	59	M8*1.0	0.8
BTSTDHK50005	HSK50A-CHY16-90	16	38	40	34	41	90	49	10	48	64	M8*1.0	0.9
BTSTDHK50006	HSK50A-CHY20-90	20	42	42	38	39	90	51	10	64	64	M8*1.0	0.9

REMARK • Special design available on request
• CAT / BBT / NT available on request

• Long or short length and small or unique bore available on request
• Inch dimensions available on request

DIN 69893 - HSK63A Standard Line

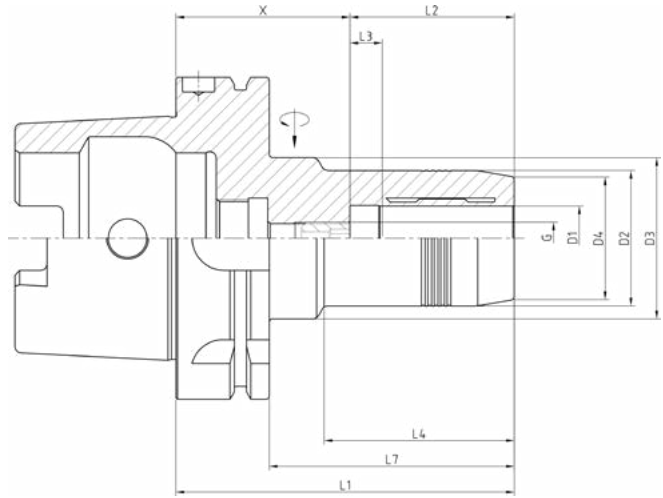


ITEM CODE	TYPE	D1 (mm)	D2 (mm)	D3 (mm)	D4 (mm)	X (mm)	L1 (mm)	L2 (mm)	L3 (mm)	L4 (mm)	L7 (mm)	G	Weight (kg)	Fig
BTSTDHK63001	HSK63A-CHY6-80	6	26	50	22	40	80	40	10	34	54	M5	1	FIG 1
BTSTDHK63002	HSK63A-CHY8-80	8	28	50	24	40	80	40	10	35	54	M6	1	FIG 1
BTSTDHK63003	HSK63A-CHY10-80	10	30	50	26	39	80	41	10	35	54	M8*1.0	1.1	FIG 1
BTSTDHK63004	HSK63A-CHY12-80	12	32	50	28	34	80	46	10	35	54	M8*1.0	1.1	FIG 1
BTSTDHK63005	HSK63A-CHY16-80	16	38	50	34	31	80	49	10	36	54	M8*1.0	1.2	FIG 1
BTSTDHK63006	HSK63A-CHY20-90	20	42	50	38	39	90	51	10	48	64	M8*1.0	1.3	FIG 1
BTSTDHK63007	HSK63A-CHY25-90	25	57	63	53	33	90	57	10	28	64	M8*1.0	1.9	FIG 2
BTSTDHK63008	HSK63A-CHY32-90	32	63	75	60	28	90	62	10	28	64	M8*1.0	2.7	FIG 2

REMARK • Special design available on request
• CAT / BBT / NT available on request

• Long or short length and small or unique bore available on request
• Inch dimensions available on request

DIN 69893 - HSK100A Standard Line



ITEM CODE	TYPE	D1 (mm)	D2 (mm)	D3 (mm)	D4 (mm)	X (mm)	L1 (mm)	L2 (mm)	L3 (mm)	L4 (mm)	L7 (mm)	G	Weight (kg)
BTSTDHK10001	HSK100A-CHY6-75	6	26	50	22	35	75	40	10	26	46	M5	2.5
BTSTDHK10002	HSK100A-CHY8-75	8	28	50	24	35	75	40	10	26	46	M6	2.5
BTSTDHK10003	HSK100A-CHY10-90	10	30	50	26	49	90	41	10	42	61	M8*1.0	2.5
BTSTDHK10004	HSK100A-CHY12-95	12	32	50	28	49	95	46	10	47	66	M8*1.0	2.6
BTSTDHK10005	HSK100A-CHY16-100	16	38	50	34	51	100	49	10	53	71	M8*1.0	2.7
BTSTDHK10006	HSK100A-CHY20-105	20	42	50	39	54	105	51	10	69	76	M10*1.0	2.8
BTSTDHK10007	HSK100A-CHY25-110	25	57	63	53	53	110	57	10	62	81	M10*1.0	3.7
BTSTDHK10008	HSK100A-CHY32-110	32	64	75	60	48	110	62	10	62	81	M10*1.0	3.8

REMARK • Special design available on request
• CAT / BBT / NT available on request

• Long or short length and small or unique bore available on request
• Inch dimensions available on request

Super Slim Line

Super Slim Line is designed to prevent tools from being interfered by the workpiece when precise processing deep holes that are difficult to reach.

This Super Slim Line allow to save tool set-up time and cost as well.

Super Slim Line's biggest advantage is its super slim design (3° Slop) optimized to prevent interference between the tool and the workpiece.

This Super Slim Line is one of the best solutions for machining at the narrowest angle and for processing workpieces that are so complex that the tool is difficult to access.

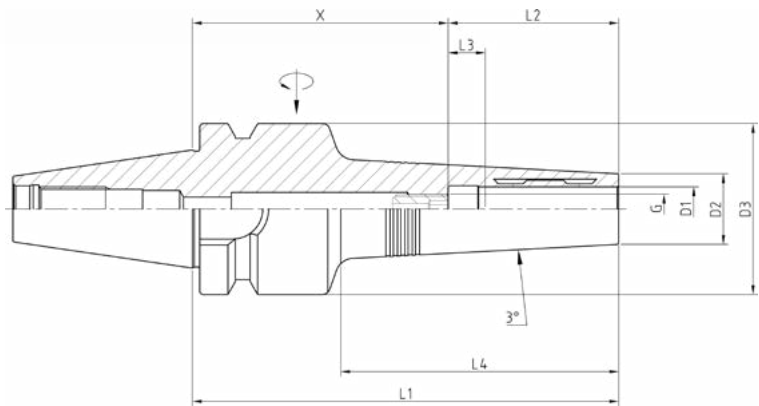
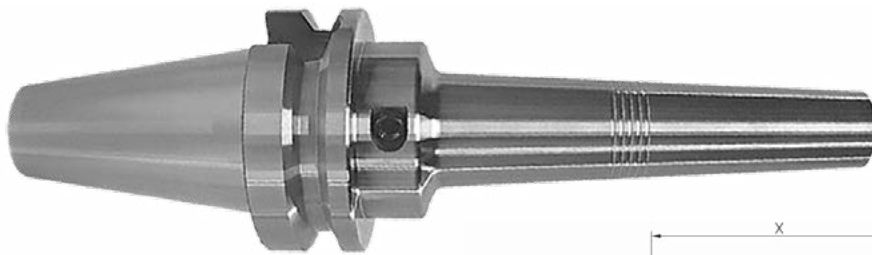
- Optimized to prevent interference between tools and workpieces
 - For deep contours
 - For complex shape of workpiece
 - For narrowest of angles between workpiece and cutting tools
- Super Slim Design with 3 degree slop
 - Minimize or prevent interference between tool and workpiece
 - Optimize for workpieces that are so complex that the tool is difficult to access.
- Suitable for 5-axis machining, e.g in mould making industry.
- Repeat run-out accuracy is 0.003mm at 3 x D
- Fine-balanced G2.5 / 25,000rpm or $U_{max} < 1$ gmm
- Vibration Damping Effect
- Axial length adjustment up to 10mm
- T-Wrench is enough for tool change
- Flexible clamping range with reduction sleeve
- For finish milling, drilling, reaming, thread-milling, chamfering



Super Slim Line

- ◆ Run-out accuracy : below 0.003mm at 3 x D
- ◆ Balancing grade : G2.5 / 25,000rpm or $U_{max} < 1$ gmm
- ◆ Axial length adjustment up to 10mm
- ◆ T-wrench is provided free of charge
- ◆ For ATC (automatic tool change)
- ◆ Taper tolerance : AT3 or better according to ISO standard
- ◆ Flexible clamping range with reduction sleeve
- ◆ Tool shank tolerance should be h6
- ◆ AD (center through) coolant system
- ◆ Long and super slim design with 3 degree slop

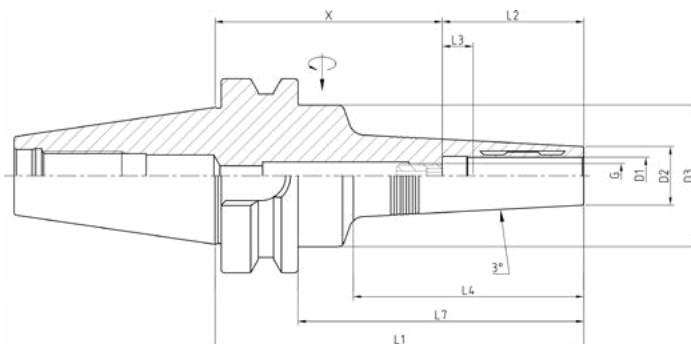
Super Slim Line - JIS B 6339 BT30



ITEM CODE (小徑油壓)	TYPE	D1 (mm)	D2 (mm)	X (mm)	L1 (mm)	L2 (mm)	L3 (mm)	L4 (mm)	G	Weight (kg)
BTSUPBT30001	BT30-CHY3P-85	3	11	67	85	18	-	42	-	0.7
BTSUPBT30002	BT30-CHY4P-85	4	11	61	85	24	-	42	-	0.7
BTSUPBT30003	BT30-CHY5P-85	5	12	59	85	26	-	42	-	0.7
BTSUPBT30004	BT30-CHY6P-115	6	13	75	115	40	10	74	M5	0.7
BTSUPBT30005	BT30-CHY8P-115	8	15	75	115	40	10	74	M6	0.7
BTSUPBT30006	BT30-CHY10P-115	10	17	74	115	41	10	74	M8*1.0	0.9
BTSUPBT30007	BT30-CHY12P-115	12	19	69	115	46	10	75	M8*1.0	0.9

REMARK • Special design available on request • Long or short length and small or unique bore available on request
 • CAT / BBT / NT available on request • Inch dimensions available on request

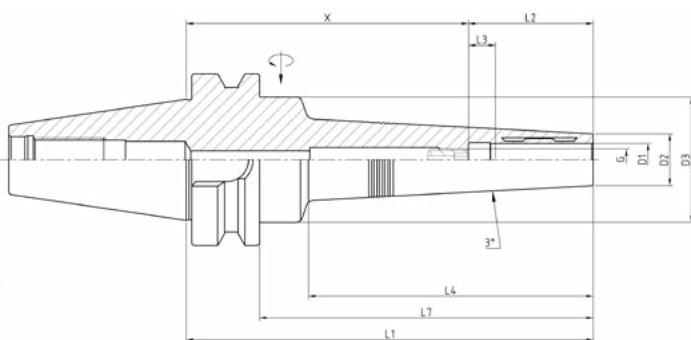
Super Slim Line - JIS B 6339 BT40



ITEM CODE	TYPE	D1 (mm)	D2 (mm)	X (mm)	L1 (mm)	L2 (mm)	L3 (mm)	L4 (mm)	L7 (mm)	G	Weight (kg)
BTSUPBT40001	BT40-CHY3P-90	3	11	72	90	18	-	42	63	-	1.1
BTSUPBT40002	BT40-CHY4P-90	4	11	66	90	24	-	42	63	-	1.1
BTSUPBT40003	BT40-CHY5P-90	5	12	64	90	26	-	42	63	-	1.4
BTSUPBT40004	BT40-CHY6P-120	6	13	80	120	40	10	74	93	M5	1.4
BTSUPBT40005	BT40-CHY8P-120	8	15	80	120	40	10	74	93	M6	1.4
BTSUPBT40006	BT40-CHY10P-120	10	17	79	120	41	10	74	93	M8*1.0	1.4
BTSUPBT40007	BT40-CHY12P-120	12	19	74	120	46	10	75	93	M8*1.0	1.4

REMARK • Special design available on request • Long or short length and small or unique bore available on request
 • CAT / BBT / NT available on request • Inch dimensions available on request

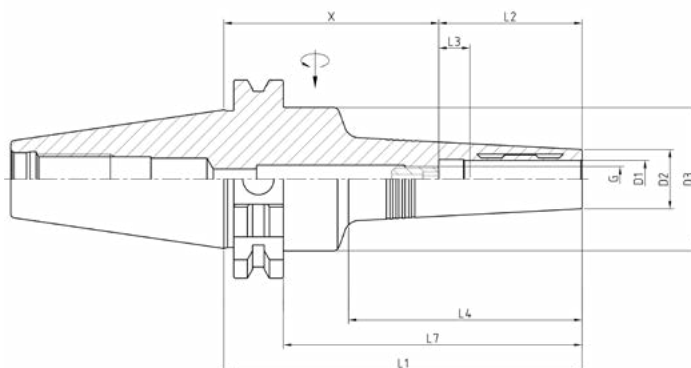
Super Slim Line - JIS B 6339 BT40 - Long



ITEM CODE	TYPE	D1 (mm)	D2 (mm)	X (mm)	L1 (mm)	L2 (mm)	L3 (mm)	L4 (mm)	L7 (mm)	G	Weight (kg)
BTSUPBT40201	BT40-CHY3P-120	3	11	102	120	18	-	72	93	-	1.3
BTSUPBT40202	BT40-CHY4P-120	4	11	96	120	24	-	72	93	-	1.3
BTSUPBT40203	BT40-CHY5P-120	5	12	94	120	26	-	72	93	-	1.3
BTSUPBT40204	BT40-CHY6P-150	6	13	110	150	40	10	104	123	M5	1.5
BTSUPBT40205	BT40-CHY8P-150	8	15	110	150	40	10	104	123	M6	1.5
BTSUPBT40206	BT40-CHY10P-150	10	17	109	150	41	10	104	123	M8*1.0	1.5
BTSUPBT40207	BT40-CHY12P-150	12	19	104	150	46	10	105	123	M8*1.0	1.5

REMARK • Special design available on request • Long or short length and small or unique bore available on request
 • CAT / BBT / NT available on request • Inch dimensions available on request

Super Slim Line - DIN 69871 SK40

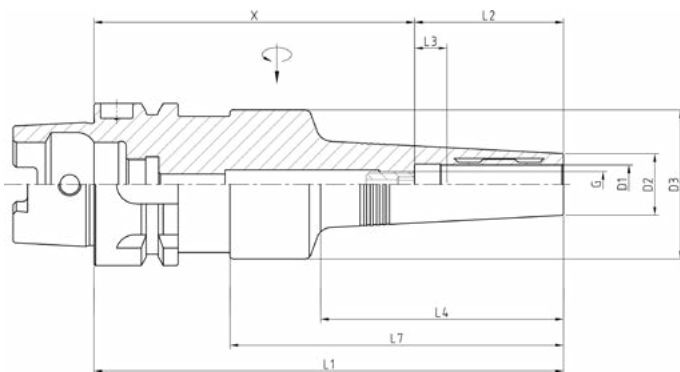


ITEM CODE	TYPE	D1 (mm)	D2 (mm)	X (mm)	L1 (mm)	L2 (mm)	L3 (mm)	L4 (mm)	L7 (mm)	G	Weight (kg)
BTSUPSK40001	SK40-CHY3P-85	3	11	67	85	18	-	42	65.9	-	1.3
BTSUPSK40002	SK40-CHY4P-85	4	11	61	85	24	-	42	65.9	-	1.3
BTSUPSK40003	SK40-CHY5P-85	5	12	59	85	26	-	42	65.9	-	1.3
BTSUPSK40004	SK40-CHY6P-115	6	13	75	115	40	10	74	95.9	M5	1.4
BTSUPSK40005	SK40-CHY8P-115	8	15	75	115	40	10	74	95.9	M6	1.4
BTSUPSK40006	SK40-CHY10P-115	10	17	74	115	41	10	74	95.9	M8*1.0	1.4
BTSUPSK40007	SK40-CHY12P-115	12	19	69	115	46	10	75	95.9	M8*1.0	1.4

REMARK • Special design available on request
• CAT / BBT / NT available on request

• Long or short length and small or unique bore available on request
• Inch dimensions available on request

Super Slim Line - DIN 69893 HSK 50A

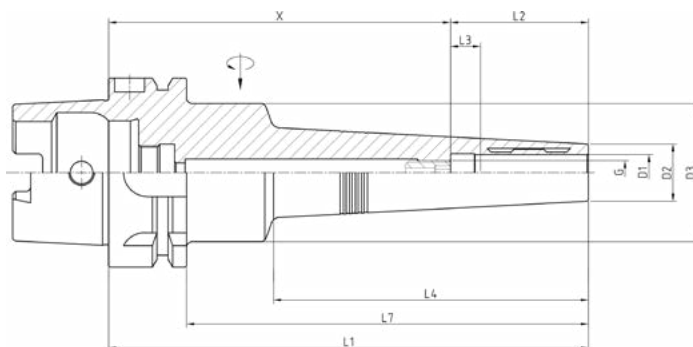


ITEM CODE	TYPE	D1 (mm)	D2 (mm)	X (mm)	L1 (mm)	L2 (mm)	L3 (mm)	L4 (mm)	L7 (mm)	G	Weight (kg)
BTSUPHK50001	HSK50A-CHY3P-115	3	11	97	115	18	-	42	89	-	0.6
BTSUPHK50002	HSK50A-CHY4P-115	4	11	91	115	24	-	42	89	-	0.6
BTSUPHK50003	HSK50A-CHY5P-115	5	12	89	115	26	-	42	89	-	0.6
BTSUPHK50004	HSK50A-CHY6P-145	6	13	105	145	40	10	74	119	M5	1.1
BTSUPHK50005	HSK50A-CHY8P-145	8	15	105	145	40	10	74	119	M6	1.1
BTSUPHK50006	HSK50A-CHY10P-145	10	17	104	145	41	10	74	119	M8*1.0	1.1
BTSUPHK50007	HSK50A-CHY12P-145	12	19	99	145	46	10	75	119	M8*1.0	1.1

REMARK • Special design available on request
• CAT / BBT / NT available on request

• Long or short length and small or unique bore available on request
• Inch dimensions available on request

Super Slim Line - DIN 69893 HSK 63A

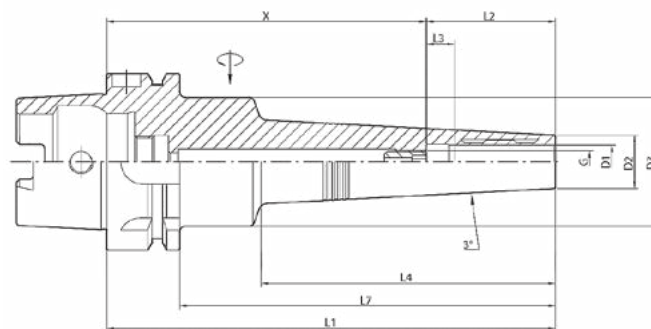


ITEM CODE	TYPE	D1 (mm)	D2 (mm)	X (mm)	L1 (mm)	L2 (mm)	L3 (mm)	L4 (mm)	L7 (mm)	G	Weight (kg)
BTSUPHK63001	HSK63A-CHY3P-100	3	11	82	100	18	-	42	74	-	1.0
BTSUPHK63002	HSK63A-CHY4P-100	4	11	76	100	24	-	42	74	-	1.0
BTSUPHK63003	HSK63A-CHY5P-100	5	12	74	100	26	-	42	74	-	1.0
BTSUPHK63004	HSK63A-CHY6P-130	6	13	90	130	40	10	74	104	M5	1.2
BTSUPHK63005	HSK63A-CHY8P-130	8	15	90	130	40	10	74	104	M6	1.2
BTSUPHK63006	HSK63A-CHY10P-130	10	17	89	130	41	10	74	104	M8*1.0	1.2
BTSUPHK63007	HSK63A-CHY12P-130	12	19	84	130	46	10	75	104	M8*1.0	1.2

REMARK • Special design available on request
• CAT / BBT / NT available on request

• Long or short length and small or unique bore available on request
• Inch dimensions available on request

Super Slim Line - DIN 69893 HSK 63A - Long



ITEM CODE	TYPE	D1 (mm)	D2 (mm)	X (mm)	L1 (mm)	L2 (mm)	L3 (mm)	L4 (mm)	L7 (mm)	G	Weight (kg)
BTSUPHK63201	HSK63A-CHY3P-130	3	11	112	130	18	-	72	104	-	0.7
BTSUPHK63202	HSK63A-CHY4P-130	4	11	106	130	24	-	72	104	-	0.7
BTSUPHK63203	HSK63A-CHY5P-130	5	12	104	130	26	-	72	104	-	0.7
BTSUPHK63204	HSK63A-CHY6P-160	6	13	120	160	40	10	104	134	M5	1.3
BTSUPHK63205	HSK63A-CHY8P-160	8	15	120	160	40	10	104	134	M6	1.3
BTSUPHK63206	HSK63A-CHY10P-160	10	17	119	160	41	10	104	134	M8*1.0	1.3
BTSUPHK63207	HSK63A-CHY12P-160	12	19	114	160	46	10	105	134	M8*1.0	1.3

REMARK • Special design available on request
• CAT / BBT / NT available on request

• Long or short length and small or unique bore available on request
• Inch dimensions available on request

Grinding Line

The Grinding Line will give you the best results in tool sharpening and grinding machines. The high run-out and repeat accuracy provides an even material removal during the grinding process as well as increases process reliability during grinding and re-sharpening. Results in the best dimensional accuracy and accuracy in size at the lip of the tool.

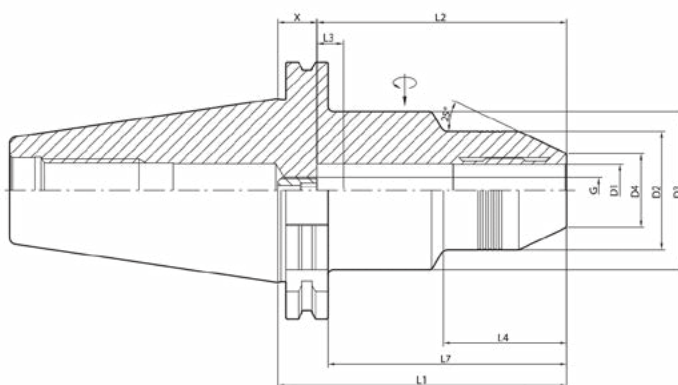
- For tool sharpening or re-sharpening and grinding machines.
- Stable repeat run-out accuracy is 0.003mm at 3 x D.
 - Increased tool life and the grinding wheel.
 - Best dimensional accuracy, surface quality and runout accuracy at the lips of the tool.
 - This means for the use of machined or re-sharpened cutting tools a considerably higher tool life time, improved surface quality at the workpiece as well as increased cutting speeds and feeding rates.
- Extremely deep clamping depths Max. 160mm for special tools with long shanks.
- Minimize interference between grinding wheel and edge of hydraulic chuck with 25°
- T-Wrench is enough for tool change and reduce set-up time - Stable torque power up to 32 Nm ~ 350 Nm depend on inner bore size.
- Vibration Damping Effect.
- Flexible clamping range with reduction sleeve.



Grinding Line

- ◆ Run-out accuracy : below 0.003mm at 3 x D
- ◆ T-wrench is provided free of charge
- ◆ For tool sharpening or re-sharpening and grinding machines
- ◆ Deep clamping depth max. 160mm depend on inner bore size
- ◆ Taper tolerance : AT3 or better according to ISO standard
- ◆ Flexible clamping range with reduction sleeve
- ◆ Tool shank tolerance should be h6
- ◆ AD (center through) coolant system
- ◆ Long and super slim design with 3 degree slop

Grinding Line - Din 69871 - SK50



ITEM CODE	TYPE	D1 (mm)	D2 (mm)	D3 (mm)	D4 (mm)	X (mm)	L1 (mm)	L2 (mm)	L3 (mm)	L4 (mm)	L7 (mm)	G	Weight (kg)
BTGRDSK50001	SK50-CHY12G-110	12	38	60	21.5	60	110	50	10	55	90.9	M8*1.0	3.7
BTGRDSK50002	SK50-CHY20G-110	20	45	60	28	15	110	95	10	47	90.9	M10*1.0	3.9
BTGRDSK50003	SK50-CHY32G-110	32	55	70	41	15	110	95	10	46	90.9	M10*1.0	4.0

REMARK • Special design available on request
• CAT / BBT / NT available on request

• Long or short length and small or unique bore available on request
• Inch dimensions available on request

Extension Line

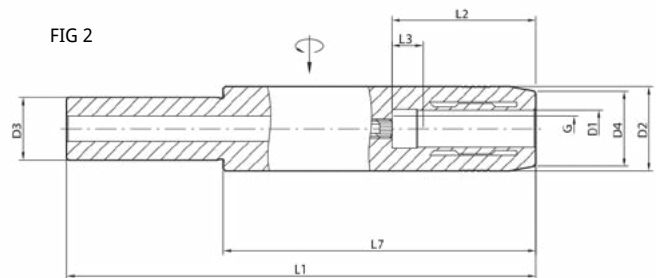
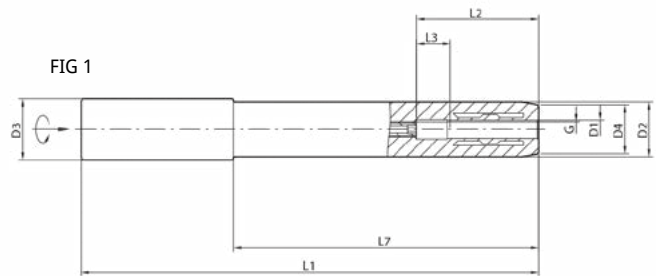
Super Slim Line is designed to prevent tools from being interfered by the workpiece when precise processing deep holes that are difficult to reach. This Extension Line allow to save tool set-up time and cost as well. The greatest advantage of Extension Line can be quickly clamped in hydraulic chuck and various type of toolholders such as ER system, Milling chucks, Slim collet chucks which is nearly precision toolholders.

- Clamped with various toolholders.
 - Hydraulic chuck
 - ER system
 - Milling chuck
 - Other type of collet system.
 - Various type of clamping system - Slim Design.
 - Minimize or prevent interference between tool and workpiece.
 - Optimize for workpieces that are so complex that the tool is difficult to access.
- Stable torque power up to 16 Nm ~ 300 Nm depend on inner bore size.
- Repeat run-out accuracy is 0.003mm at 3 x D - Fine-balanced G2.5 / 25,000rpm or $U_{max} < 1$ gmm - Vibration Damping Effect.
- Axial length adjustment up to 10mm.
- T-Wrench is enough for tool change.
- Flexible clamping range with reduction sleeve.
- For finish milling, drilling, reaming, chamfering.



Extension Line

- ◆ Run-out accuracy : below 0.003mm at 3 x D
- ◆ Balancing grade : G2.5 / 25,000rpm or $U_{max} < 1 \text{ gmm}$
- ◆ Axial length adjustment up to 10mm
- ◆ T-wrench is provided free of charge
- ◆ Flexible clamping range with reduction sleeve
- ◆ Tool shank tolerance should be h6
- ◆ AD (center through) coolant system



ITEM CODE (延長棒)	TYPE	D1 (mm)	D2 (mm)	D3 (mm)	D4 (mm)	L1 (mm)	L2 (mm)	L3 (mm)	L7 (mm)	G	Weight (kg)	Fig
BTEXTE200001	E20-CHY6-150	6	18	20	16	150	40	10	100	M5	0.45	Fig 1
BTEXTE200002	E20-CHY8-150	8	20	20	18	150	40	10	100	M5	0.45	Fig 1
BTEXTE200003	E20-CHY10-150	10	22	20	19	150	41	10	100	M6	0.45	Fig 1
BTEXTE200004	E20-CHY12-150	12	27	20	24	150	16	10	100	M6	0.45	Fig 2
BTEXTE200005	E20-CHY16-150	16	30	20	28	150	49	10	100	M8*1.0	0.45	Fig 2
BTEXTE200006	E20-CHY20-150	20	32	20	30	150	51	10	100	M8*1.0	0.55	Fig 2
BTEXTE200007	E32-CHY20-150	20	32	32	30	150	51	10	90	M8*1.0	0.70	Fig 2
BTEXTE200008	E32-CHY20-200	20	32	32	30	200	51	10	90	M8*1.0	0.75	Fig 2

REMARK

- Special design available on request
- CAT / BBT / NT available on request

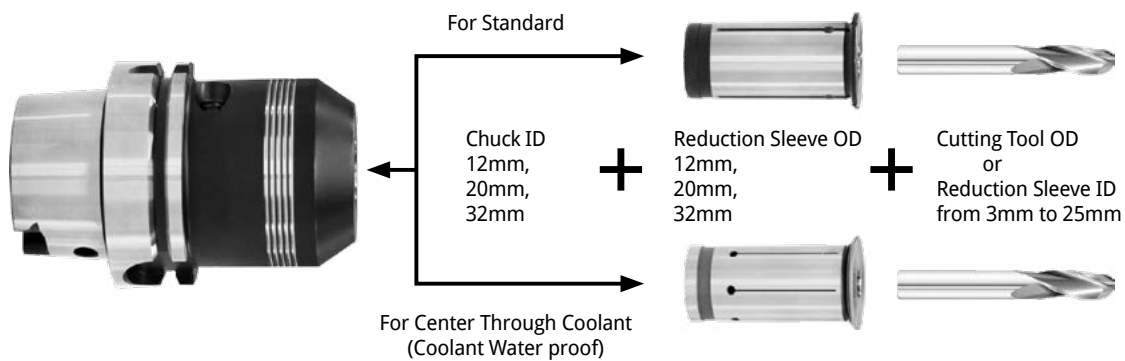
- Long or short length and small or unique bore available on request
- Inch dimensions available on request

Reduction Sleeve

Reduction sleeve allows you to clamp different tool diameters from 3mm to 25mm using the same hydraulic chuck even if you need to applicate coolant-proof.

For example,

Inner bore size 12mm of hydraulic chuck enables you to clamp tool diameters from 3mm~10mm with reduction sleeve.
 Inner bore size 20mm of hydraulic chuck enables you to clamp tool diameters from 3mm~18mm with reduction sleeve.
 Inner bore size 32mm of hydraulic chuck enables you to clamp tool diameters from 3mm~25mm with reduction sleeve.



ITEM CODE	TYPE	D1 (mm)	D2 (mm)	D3 (mm)	L1 (mm)	L10 (mm)	Weight (kg)
BTCOLRS12001	RS12-3	3	12	16.5	45	2	0.1
BTCOLRS12002	RS12-4	4	12	16.5	45	2	0.1
BTCOLRS12003	RS12-5	5	12	16.5	45	2	0.1
BTCOLRS12004	RS12-6	6	12	16.5	45	2	0.1
BTCOLRS12005	RS12-8	8	12	16.5	45	2	0.1
BTCOLRS20001	RS20-3	3	20	24.5	50.5	2	0.1
BTCOLRS20002	RS20-4	4	20	24.5	50.5	2	0.1
BTCOLRS20003	RS20-5	5	20	24.5	50.5	2	0.1
BTCOLRS20004	RS20-6	6	20	24.5	50.5	2	0.1
BTCOLRS20005	RS20-7	7	20	24.5	50.5	2	0.1
BTCOLRS20006	RS20-8	8	20	24.5	50.5	2	0.1
BTCOLRS20007	RS20-9	9	20	24.5	50.5	2	0.1
BTCOLRS20008	RS20-10	10	20	24.5	50.5	2	0.1
BTCOLRS20009	RS20-11	11	20	24.5	50.5	2	0.1
BTCOLRS20010	RS20-12	12	20	24.5	50.5	2	0.1
BTCOLRS20011	RS20-13	13	20	24.5	50.5	2	0.1
BTCOLRS20012	RS20-14	14	20	24.5	50.5	2	0.1
BTCOLRS20013	RS20-15	15	20	24.5	50.5	2	0.1
BTCOLRS20014	RS20-16	16	20	24.5	50.5	2	0.1
BTCOLRS32001	RS32-6	6	32	36.5	60.5	3	0.3
BTCOLRS32002	RS32-8	8	32	36.5	60.5	3	0.3
BTCOLRS32003	RS32-10	10	32	36.5	60.5	3	0.3
BTCOLRS32004	RS32-12	12	32	36.5	60.5	3	0.3
BTCOLRS32005	RS32-14	14	32	36.5	60.5	3	0.3
BTCOLRS32006	RS32-16	16	32	36.5	60.5	3	0.3
BTCOLRS32007	RS32-18	18	32	36.5	60.5	3	0.3
BTCOLRS32008	RS32-20	20	32	36.5	60.5	3	0.3
BTCOLRS32009	RS32-25	25	32	36.5	60.5	3	0.3

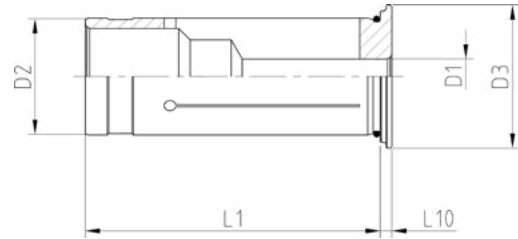
REMARK • Special design available on request
 • CAT / BBT / NT available on request

• Long or short length and small or unique bore available on request
 • Inch dimensions available on request

CHUMPOWER Hydraulic Chuck Reduction Sleeve

Reduction Sleeve for hydraulic chuck allow you to extend tool shank from diameter 3mm to 25mm.
This Reduction Sleeve allow to save tool set-up time and cost as well.

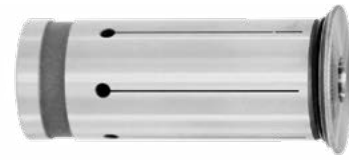
- ◆ Run-out accuracy: below 0.005mm at 3 x D
- ◆ Tool shank tolerance should be h6



For Universal



For Center Through Coolant



ITEM CODE	TYPE	D1 (mm)	D2 (mm)	D3 (mm)	L1 (mm)	L10 (mm)	Weight (kg)
BTCOLWR12001	WRS12-3	3	12	16.5	45	2	0.1
BTCOLWR12002	WRS12-4	4	12	16.5	45	2	0.1
BTCOLWR12003	WRS12-5	5	12	16.5	45	2	0.1
BTCOLWR12004	WRS12-6	6	12	16.5	45	2	0.1
BTCOLWR12005	WRS12-8	8	12	16.5	45	2	0.1
BTCOLWR20001	WRS20-3	3	20	24.5	50.5	2	0.1
BTCOLWR20002	WRS20-4	4	20	24.5	50.5	2	0.1
BTCOLWR20003	WRS20-5	5	20	24.5	50.5	2	0.1
BTCOLWR20004	WRS20-6	6	20	24.5	50.5	2	0.1
BTCOLWR20005	WRS20-7	7	20	24.5	50.5	2	0.1
BTCOLWR20006	WRS20-8	8	20	24.5	50.5	2	0.1
BTCOLWR20007	WRS20-9	9	20	24.5	50.5	2	0.1
BTCOLWR20008	WRS20-10	10	20	24.5	50.5	2	0.1
BTCOLWR20009	WRS20-11	11	20	24.5	50.5	2	0.1
BTCOLWR20010	WRS20-12	12	20	24.5	50.5	2	0.1
BTCOLWR20011	WRS20-13	13	20	24.5	50.5	2	0.1
BTCOLWR20012	WRS20-14	14	20	24.5	50.5	2	0.1
BTCOLWR20013	WRS20-15	15	20	24.5	50.5	2	0.1
BTCOLWR20014	WRS20-16	14	20	24.5	50.5	2	0.1
BTCOLWR32001	WRS32-6	6	32	36.5	60.5	3	0.3
BTCOLWR32002	WRS32-8	8	32	36.5	60.5	3	0.3
BTCOLWR32003	WRS32-10	10	32	36.5	60.5	3	0.3
BTCOLWR32004	WRS32-12	12	32	36.5	60.5	3	0.3
BTCOLWR32005	WRS32-14	14	32	36.5	60.5	3	0.3
BTCOLWR32006	WRS32-16	16	32	36.5	60.5	3	0.3
BTCOLWR32007	WRS32-18	18	32	36.5	60.5	3	0.3
BTCOLWR32008	WRS32-20	20	32	36.5	60.5	3	0.3
BTCOLWR32009	WRS32-25	25	32	36.5	60.5	3	0.3

REMARK • Special design available on request
 • CAT / BBT / NT available on request

• Long or short length and small or unique bore available on request
 • Inch dimensions available on request

Quality Overall

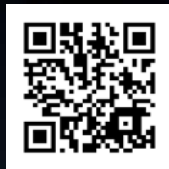
Details	Eco Line	Standard Line	Super Slim Line	Grinding Line	Extension Line
Clamping by	T wrench and no need				
Torque Power	Over 550 Nm	20 Nm~650 Nm depend on inner bore.			
Rough Milling	●	◎	△	△	△
Damping Effect	●	●	●	●	●
Finish Milling	●	●	●	●	●
Drilling	●	●	●	●	●
Reaming	●	●	●	●	●
Thread Milling	●	◎	△	△	△
High Speed Cutting	●	●	●	●	●
Chamfering	●	●	●	●	●
Boring	●	◎	△	△	△
Prevent interference between tool and workpiece	△	◎	●	△	●
Run-Out and repeat accuracy	Below 0.003mm at 3 x D				
Balancing Grade	G2.5 / 25,000rpm or $U_{max} < 1$ gmm				
Flexibility of clamping range by reduction sleeve	●	●	●	●	●
Using Flat Shank Tool	Available with reduction sleeve				

● Extremely suitable ◎ Suitable △ Not recommend

Torque Power

ID of Hydraulic chuck	Min. insert depth of cutting tool into chuck ID. (mm)	Torque Power (Nm)
6 Ø	40	20
8 Ø	40	30
10 Ø	41	50
12 Ø	46	100
14 Ø	46	120
16 Ø	49	200
18 Ø	49	250
20 Ø	51	350
20 Ø(Eco line)	51	550
25 Ø	57	450
32 Ø	62	650

Chum Power



CHUMPOWER MACHINERY CORP.
銓寶工業股份有限公司

No.688-1, Sec. 3, Zhongshan Rd., Wuri Dist, Taichung City 414, Taiwan
414 台中市烏日區中山路三段 688-1 號

TEL: 886 4 23388289 | FAX: 886 4 2336 5626
Email: dali@chumpower.com