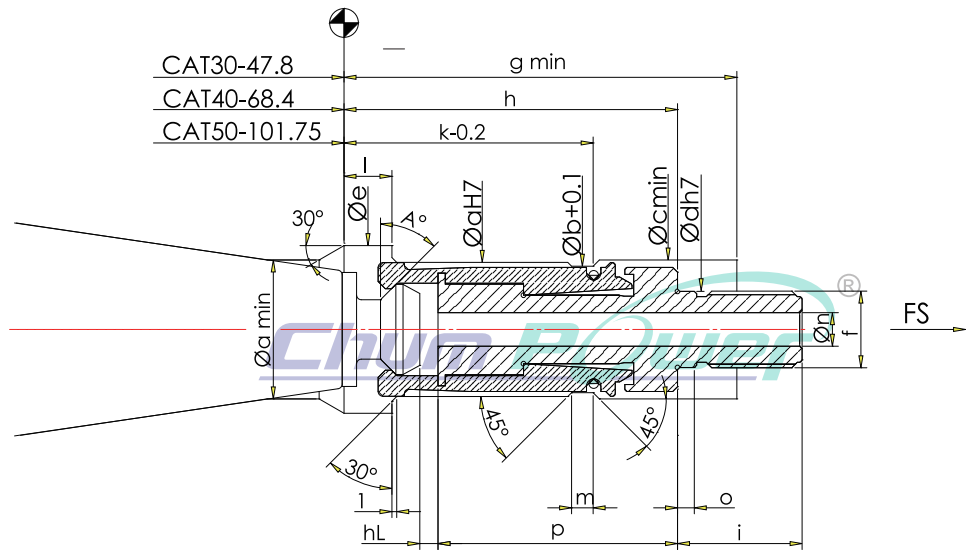


## CAT PULL STUD TYPE CLAMPING 四瓣爪 CAT PULL STUD TYPE CLAMPING



### Design Features :

1. All the above materials are composed of alloy steel.
2. The Gripper is in accordance with the global standard of Pull Stud JIS6339 (MAS403) system.
3. Grippers are developed for integrated and comprise four clamping segments ,which is suitable for high and low-speed turning spindles.
4. The surfaces of Grippers are wear-resisting, anticorrosive and special tensile force treatment. The tensile force can bear 1,000 KG force which means 3 million times of lifetime testing circle in our each Grippers. (\*\*ie.CAT40)
5. Easy to assembly and suitable for every type of spindles.
6. Our Grippers adopt the rules of BERG, OTT and RöhM standards.

### 特 點

1. 四瓣爪材料皆以合金鋼製成
2. 此四瓣爪依據拉栓JIS6339(MAS 403)標準製作
3. 一體式分隔爪片設計適用於各種高低轉速之主軸
4. 爪片表面經耐磨耗、防腐蝕之特殊處理，拉力經循環壽命測試機測試可承受1000Kg、300萬次 (\*\*CAT40為例)
5. 採用易拆裝設計，適於各型系列主軸使用
6. 同步採用德國OTT、BERG、及ROHM之說明規範

Code No. 型號	Spec. 規格	A°	a	b	c	d	e	g	h	f
90025	CAT30	45°	19	17.8	19.5	10	24	50	47	M10*1.5P
90026	CAT40		28	26.4	28.5	16	35	82	70	M16*1.5P
90027	CAT50		43	40.4	43.5	22	54	98	90	M22*1.5P

Code No. 型號	Spec. 規格	i	k	l	m	n	o	p	hL	Fs max kN
90025	CAT30	20	37	7.5	3.5	4	3	33	2.5	10
90026	CAT40	26	52	10	4.5	7	4	50	4	18
90027	CAT50	35	69	16	5	9.5	5	58	6.5	35