

## Spray Nozzle Series 噴水頭系列

Leak Lock Type 止漏型

Special design for avoiding oil leaking. Not delaying spraying fluid which prolongs the longevity of the tool holders. Leak lock spray nozzle is made by stainless steel. It extends the lifetime of the tools and avoids corrosion.

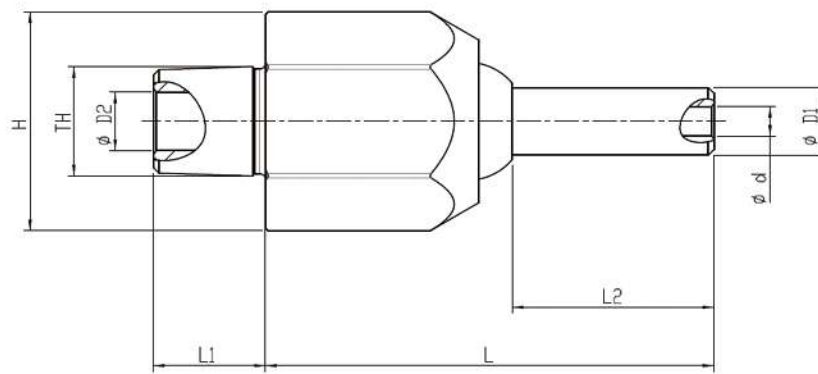
特殊設計可立即停止供給切削液，將不再有切削油滴漏的困擾。且出水不延遲，可延長刀具使用壽命。亦有不銹鋼材質的噴水頭，可延長產品壽命，防止生鏽。



Alloy Steel Type  
合金鋼型



Stainless Type  
不銹鋼型



Code No. 型號	螺牙規格 (TH)	L	L1	L2	D1	D2	d	H
BA90104020001A	PT1/8	40		18				
BA90104020002A	PT1/8	60	10	38	6	6	4	17
BA90104020003A	PT1/4	40		18				
BA90104020004A	PT1/4	60		38				
BA90104020005A	PT3/8	30		5.9				
BA90104020006A	PT3/8	50	13	25.9	8	10	6	24
BA90104020007A	PT3/8	70		45.9				
BA90104020008A	NPT1/4	40	10	18	6	6	4	17
BA90104020009A	NPT1/4	60		38				
BA90104020010A	NPT3/8	30		5.9				
BA90104020011A	NPT3/8	50	13	25.9	8	10	6	24
BA90104020012A	NPT3/8	70		45.9				
BA90104020013A	M10xP1.25	40	10	18	6	6	4	17
BA90104020014A	M10xP1.25	60		38				
BA90104020015A	M20xP1.5	30		5.9				
BA90104020016A	M20xP1.5	50	13	25.9	8	10	6	24
BA90104020017A	M20xP1.5	70		45.9				

註：本產品亦可製作不銹鋼模式

最大壓力：20 Bar