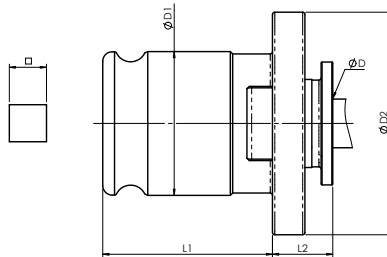


## Quick Change Tap Collets-Rigid Type 快換式絲攻夾頭 - 剛性 JIS Type

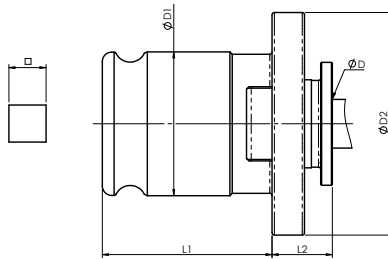


Code No. 型號	TC308B JIS Tap		Tap Shank 絲攻尺寸		Capacity 攻牙能力	L1 (mm)	L2 (mm)	ΦD1 (mm)	ΦD2 (mm)
	ΦD 柄徑	□四方孔							
BA358JS080101A	M8		6.2	5.0	M3-M8	19.5	[8]	13.0	22.0
BA358JS100101A	M10	UNC3/8	7.0	5.5					

Code No. 型號	TC312B JIS Tap		Tap Shank 絲攻尺寸		Capacity 攻牙能力	L1 (mm)	L2 (mm)	ΦD1 (mm)	ΦD2 (mm)
	ΦD 柄徑	□四方孔							
BA354JS030101A	M3	#5~6	4.0	3.2	M3-M14	22	7	19	30
BA354JS040101A	M4~4.5	#8	5.0	4.0					
BA354JS050101A	M5~5.5	#10	5.5	4.5					
BA354JS060101A	M6	UNC1/4	6.0	4.5					
BA354JS080101A	M8~7		6.2	5.0					
BA354JS100101A	M10~9	UNC3/8	7.0	5.5					
BA354JS110101A	M11	UNC7/16	8.0	6.0					
BA354JS120101A	M12		8.5	6.5					
BA354JS130101A		UNC1/2	9.0	7.0					
BA354JS140101A	M14~15	UNC9/16	10.5	8.0					

Code No. 型號	TC820B JIS Tap		Tap Shank 絲攻尺寸		Capacity 攻牙能力	L1 (mm)	L2 (mm)	ΦD1 (mm)	ΦD2 (mm)
	ΦD 柄徑	□四方孔							
BA355JS080101A	M8~7		6.2	5.0	M8-24	36	11	31	48
BA355JS100101A	M10~9	UNC3/8	7.0	5.5					
BA355JS110001A	M11	UNC7/16	8.0	6.0					
BA355JS120001A	M12		8.5	6.5					
BA355JS130101A		UNC1/2	9.0	7.0					
BA355JS140101A	M14~15	UNC9/16	10.5	8.0					
BA355JS160101A		UNC5/8	12.0	9.0					
BA355JS160102A	M16		12.5	10.0					
BA355JS180101A	M18	UNC3/4	14.0	11.0					
BA355JS200101A	M20		15.0	12.0					
BA355JS220101A	M22	UNC7/8	17.0	13.0					
BA355JS240101A	M24-M25		19.0	15.0					

## Quick Change Tap Collets-Rigid Type 快換式絲攻夾頭 - 剛性 JIS Type



Code No. 型號	TC1433B JIS Tap		Tap Shank 絲攻尺寸		Capacity 攻牙能力	L1 (mm)	L2 (mm)	ΦD1 (mm)	ΦD2 (mm)
			ΦD 柄徑	□四方孔					
BA356JS140101A	M14~15	UNC9/16	10.5	8.0	M14~M36	56	14	48	69
BA356JS160102A		UNC5/8	12.0	9.0					
BA356JS160101A	M16		12.5	10.0					
BA356JS180101A	M18	UNC3/4	14.0	11.0					
BA356JS200101A	M20		15.0	12.0					
BA356JS220101A	M22	UNC7/8	17.0	13.0					
BA356JS240101A	M24~25		19.0	15.0					
BA356JS270101A	M27~26	UNC1	20.0	15.0					
BA356JS280101A	M28		21.0	17.0					
BA356JS290101A		UNC1 1/8	22.0	17.0					
BA356JS300101A	M30		23.0	17.0					
BA356JS320101A	M32	UNC1 1/4	24.0	19.0					
BA356JS320101A	M33		25.0	19.0					
BA356JS350101A	M35~34	UNC1 3/8	26.0	21.0					
BA356JS360101A	M36		28.0	21.0					