

## BT ER COLLET CHUCK

BT刀把ER立銑式 BT Shank JIS B 6339 (MAS 403 BT) with Collet Chuck DIN 6499

### Application / 產品適用

- The product can be applied for end mills, drill bits, drill reamers, taps, and can clamp any straight cutters and tools.
- 本產品可應用於銑刀，鑽頭，鉸刀，絲攻及可夾持任何直柄的刀具及工具。

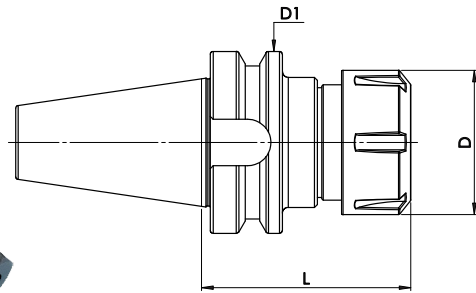


Fig.1

Fig.2



Code No. 型號	TYPE 規格	L	D	D1	Spanner No. 扳手編號	Fig		
BA2BT30022060C	BT30×ER11- 60	60	19	46	BA2ER11020001A	1		
BA2BT30023060C	BT30×ER16- 60	60	28		BA2ER16020001A			
BA2BT30023100C	BT30×ER16- 100	100	34		BA2ER20020001A			
BA2BT30024060C	BT30×ER20- 60	60			BA2ER25100001A			
BA2BT30024100C	BT30×ER20- 100	100	42		BA2ER32100001A			
BA2BT30105060C	BT30×ER25- 60	60	50		63		2	
BA2BT30105100C	BT30×ER25- 100	100	19					BA2ER11020001A
BA2BT30106070C	BT30×ER32- 70	70	28					BA2ER16020001A
BA2BT30106100C	BT30×ER32- 100	100	34					BA2ER20020001A
BA2BT40022070C	BT40×ER11- 70	70	42					BA2ER25100001A
BA2BT40022100C	BT40×ER11- 100	100	50	BA2ER32100001A				
BA2BT40023070C	BT40×ER16- 70	70	63	BA2ER40100001A				
BA2BT40023100C	BT40×ER16- 100	100	78					
BA2BT40024070C	BT40×ER20- 70	70	90					
BA2BT40024100C	BT40×ER20- 100	100						
BA2BT40105070C	BT40×ER25- 70	70	100					
BA2BT40105100C	BT40×ER25-100	100						
BA2BT40106070C	BT40×ER32- 70	70	100					
BA2BT40106100C	BT40×ER32- 100	100						
BA2BT40107070C	BT40×ER40- 70	70	100					
BA2BT40107100C	BT40×ER40- 100	100						
BA2BT40108090C	BT40×ER50- 90	90	100					
BA2BT40108100C	BT40×ER50- 100	100						

\* Custom-built products are available on request.

## BT ER COLLET CHUCK

BT 刀把 ER立銑式 BT Shank JIS B 6339 (MAS 403 BT) with Collet Chuck DIN 6499

■ Application / 產品適用

- The product can be applied for end mills, drill bits, drill reamers, taps, and can clamp any straight cutters and tools.
- 本產品可應用於銑刀，鑽頭，鉸刀，絲攻及可夾持任何直柄的刀具及工具。



Fig.1

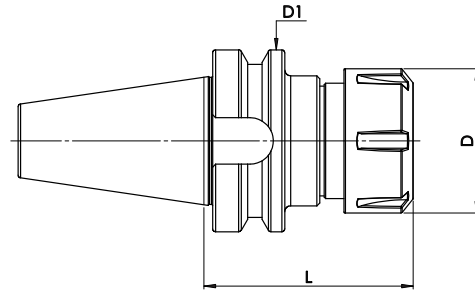


Fig.2



Tightening Torque ER 刀桿 (鎖緊力值)	
TYPE 規格	N-m 單位
ER11	25±10
ER16	60±10
ER20	90±10
ER25	90±10
ER32	100±10
ER40	110±10
ER50	120±10

Code No. 型號	TYPE 規格	L	D	D1	Spanner No. 扳手編號	Fig
BA2BT50023070C	BT50×ER16- 70	70	28	100	BA2ER16020001A BA2ER20020001A	1
BA2BT50023100C	BT50×ER16- 100	100				
BA2BT50024070C	BT50×ER20- 70	70	34			
BA2BT50024105C	BT50×ER20- 105	105				
BA2BT50105070C	BT50×ER25- 70	70	42		BA2ER20020001A	2
BA2BT50105105C	BT50×ER25- 105	105				
BA2BT50106080C	BT50×ER32- 80	80	50		BA2ER32100001A	
BA2BT50106100C	BT50×ER32- 100	100				
BA2BT50107080C	BT50×ER40- 80	80	63		BA2ER40100001A	
BA2BT50108100C	BT50×ER50- 100	100				
BA2BT50108120C	BT50×ER50- 120	120	78	BA2ER50100001A		

\* Custom-built products are available on request.