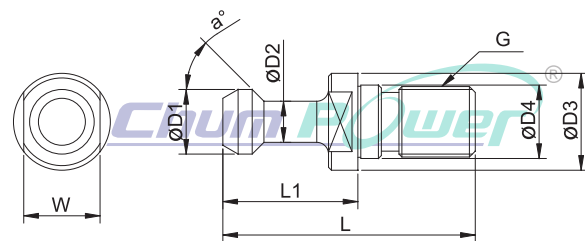


## BT/Threading Ground Models

### Pull Stud 拉栓

BT 磨牙型

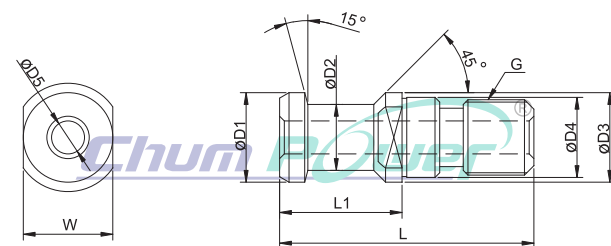


Code NO. 型號	TYPE (BT- $\alpha^{\circ}$ G) 規格	W	L	L1	$\phi D1$	$\phi D2$	$\phi D3$	$\phi D4$	G
81242	BT30-45 $^{\circ}$ G	13	43	23	11	7	16.5	12.5	M12
81245	BT40-45 $^{\circ}$ G	19	60	35	15	10	23	17	M16
81244	BT50-45 $^{\circ}$ G	30	85	45	23	17	38	25	M24
81243	BT30-60 $^{\circ}$ G	13	43	23	11	7	16.5	12.5	M12
81246	BT40-60 $^{\circ}$ G	19	60	35	15	10	23	17	M16
81247	BT50-60 $^{\circ}$ G	30	85	45	23	17	38	25	M24
81248	BT30-90 $^{\circ}$ G	13	43	23	11	7	16.5	12.5	M12
81249	BT40-90 $^{\circ}$ G	19	60	35	15	10	23	17	M16
81250	BT50-90 $^{\circ}$ G	30	85	45	23	17	38	25	M24

## DIN A Type

### Pull Stud 拉栓

DIN A型

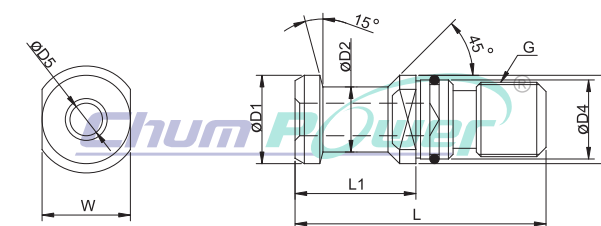


Code NO. 型號	TYPE 規格	W	L	L1	$\phi D1$	$\phi D2$	$\phi D3$	$\phi D4$	$\phi D5$	G
81251	DIN 30A	14	44	24	13	9	17	13	-	M12
81252	DIN 40A	19	54	26	19	14	23	17	7	M16
81253	DIN 40-A-L	19	54	29	19	14	23	17	7	M16
81254	DIN 50A	30	74	34	28	21	36	25	11.5	M24

## DIN B Type

### Pull Stud 拉栓

DIN B型

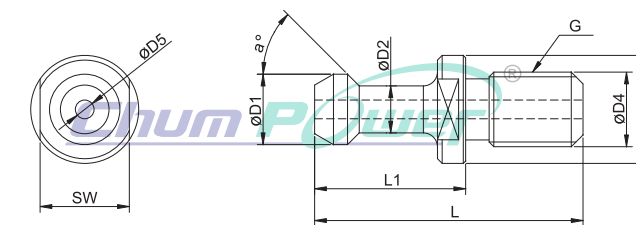


Code NO. 型號	TYPE 規格	W	L	L1	$\phi D1$	$\phi D2$	$\phi D3$	$\phi D4$	$\phi D5$	G
81255	DIN 30B	14	44	24	13	9	17	13	-	M12
81256	DIN 40B	19	54	26	19	14	23	17	7	M16
81257	DIN 50B	30	74	34	28	21	36	25	11.5	M24

## DIN / R Type

### Pull Stud 拉栓

DIN R型



Code NO. 型號	TYPE 規格	SW	L	L1	$\phi D1$	$\phi D2$	$\phi D3$	$\phi D4$	$\phi D5$	G
81258	DIN 40-R	19	57	32	15	10	23	16	4	M16*P2.0