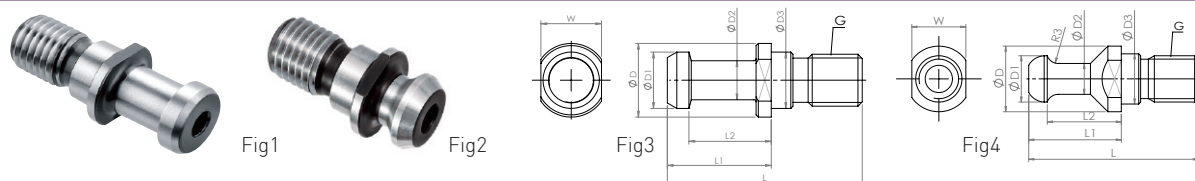


ISO Type

ISO A / ISO B / ISO / ISO-R

Pull Stud 拉栓

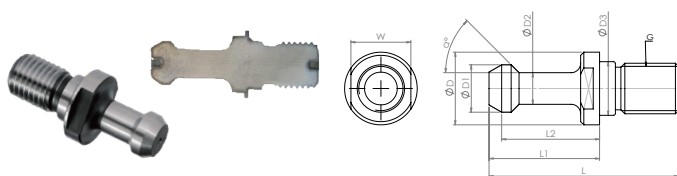


Code No. 型號	Type 規格	ØT	W	L	L1	L2	ØD	ØD1	ØD2	ØD3	G	Fig
BE812SA01A	ISO40-A	7	19	54	26	20	23	19	14	17	M16xP2.0	1
BE812SA02A	ISO50-A	11.5	30	74	34	25	36	28	21	25	M24xP3.0	
BE812SB01A	ISO40-B	7.3	19	44.5	16.4	11.15	22.5	18.95	12.95	17	M16xP2.0	2
BE812SB02A	ISO50-B	11.5	30	65.5	25.5	17.95	37	29.1	19.6	25	M24xP3.0	
BE812SO02A	ISO20	-	10	26	12	9	11.4	9	6	8.5	M8xP1.25	3
BE812SO03A	ISO25	-	10	32	16	11.6	12	10	7	9	M8xP1.25	
BE812SO04A	ISO30	-	14	45	24	19	17	13	9	13	M12xP1.75	
BE812SR04A	ISO-30-R3	-	14	44	24	19.2	17	12	8	13	M12xP1.75	

BT(S) Power Type

強力型拉栓

Pull Stud 拉栓



-190° cryogenic treatment.
High hardness.
High tensile.

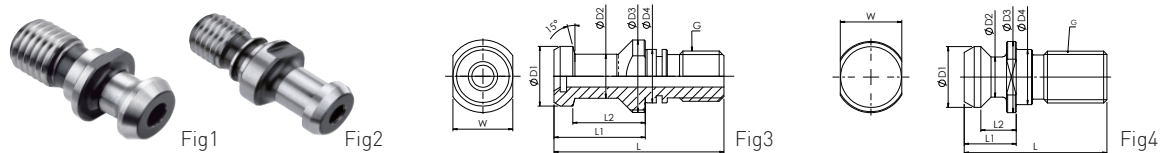
強力型拉栓
破層分布穩定
本產品經過 -190°超冷處理
硬度增加 具有高拉力

Code No. 型號	Type 規格	W	L	L1	L2	ØD	ØD1	ØD2	ØD3	G
BE815BS01A	BT30-45° S	13	43	23	18	16.5	11	7	12.5	M12xP1.75
BE815BS02A	BT30-60° S									
BE815BS03A	BT40-45° S	19	60	35	28	23	15	10	17	M16xP2.0
BE815BS04A	BT40-60° S									
BE816SD01A	BT30-45° SK	13	43	23	18	16.5	11	7	12.5	M12xP1.75
BE816SD02A	BT40-45° SK	19	60	35	28	23	15	10	17	M16xP2.0

DIN / JIS Type

DIN & JIS6339 & BT CAT MAZAK Type

Pull Stud 拉栓



Code No. 型號	Type 規格	W	L	L1	L2	ØD1	ØD2	ØD3	ØD4	ØT 水孔	Ød5	G	Fig
BE812D003A	DNI40-A-L-00	19	54	29	23	19	14	23	17	-	-	M16xP2.0	3
BE813JS01A	JIS 6339-40PB	19	54	29	23	19	14	23	17	-	-	M16xP2.0	
BE813JS03A	JIS 6339-30PB	13	43	23.4	18.4	12	8	16.5	12.5	-	-	M12xP1.75	1
BE813JS04A	JIS 6339-50PB	30	74	34	25	28	21	38	25	-	-	M24xP3.0	
BE813JS02A	JIS 6339-40P	19	54	29	23	19	14	23	17	7	-	M16xP2.0	
BE813JS06A	JIS 6339-30P	13	43	23.4	18.4	12	8	16.5	12.5	4	-	M12xP1.75	
BE813JS07A	JIS 6339-50P	30	74	34	25	28	21	38	25	10	-	M24xP3.0	2
BE813MW02A	BT40-45MAZAK	19	44.1	19.1	14	18.8	12.45	22	17	7	-	M16xP2.0	
BE813MW01A	BT50-45MAZAK	30	65.2	25.1	17.58	28.95	20.83	37	25	10	16	M24xP3.0	4
BE813MW03A	BT40-45PBMAZAK	19	44.1	19.1	14	18.8	12.45	22	17	-	-	M16xP2.0	
BE813MW04A	BT50-45PBMAZAK	30	65.2	25.1	17.58	28.95	20.83	37	25	-	-	M24xP3.0	
BE813MW05A	CAT40PB-MAZAK	19	41.1	16.1	11	18.8	12.45	22	17	-	-	M16xP2.0	